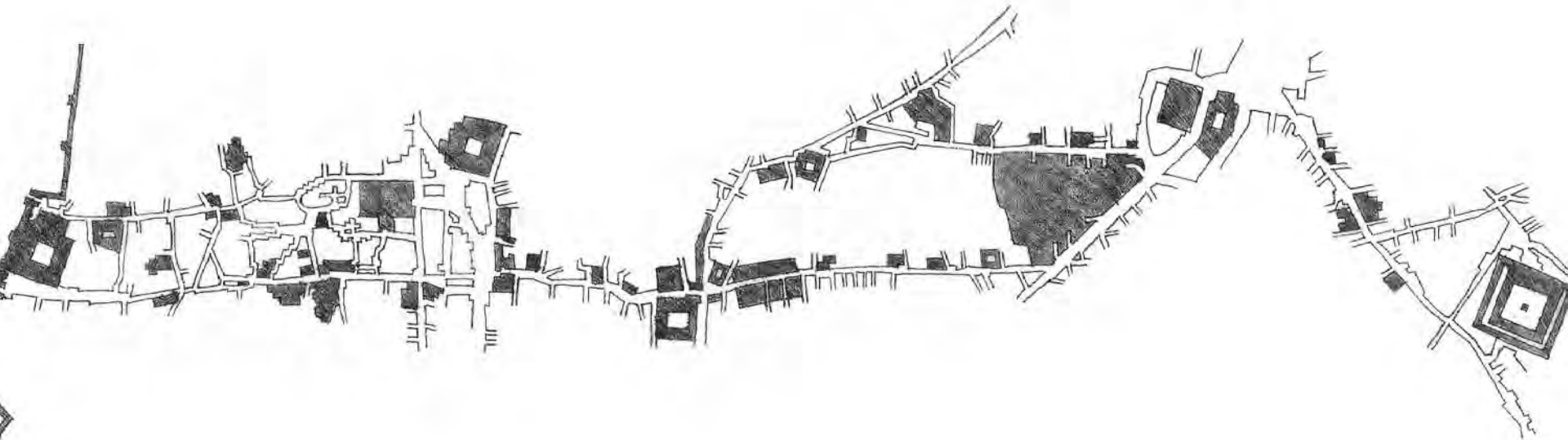


Site Analysis and Design

Before embarking upon a design project, it's necessary to analyze existing conditions. This is typically completed through a series of drawings, documenting your observations.



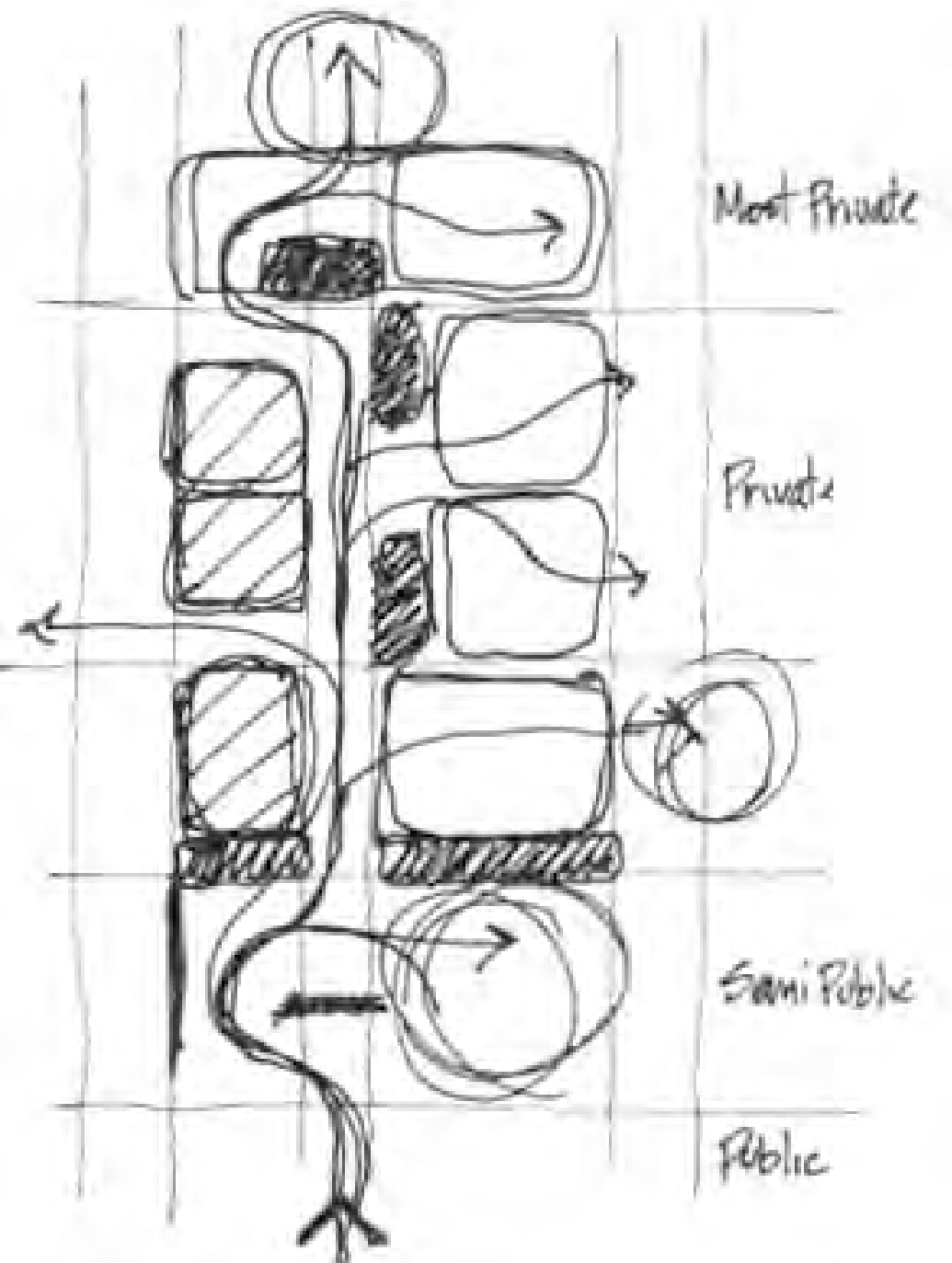
In class today, you will initiate a series of trace overlay diagrams that focus on the site for the next project.



You may use the satellite photo handed out, or print our your own (these are from Google Maps). You must look at the immediate surrounding context, and other adjacent streets, buildings and paths.

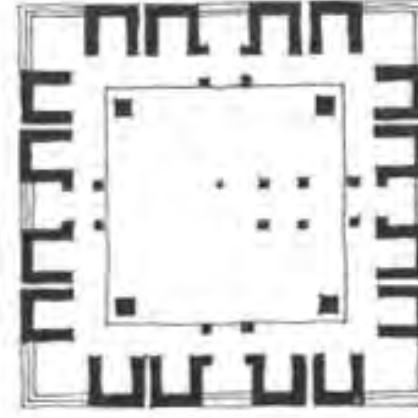
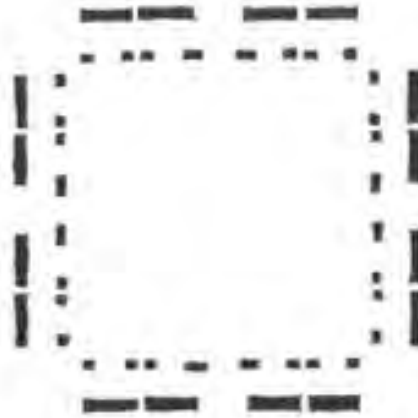
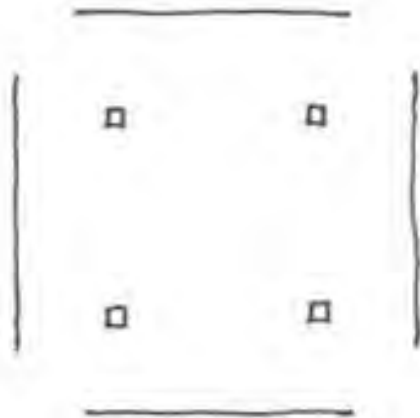
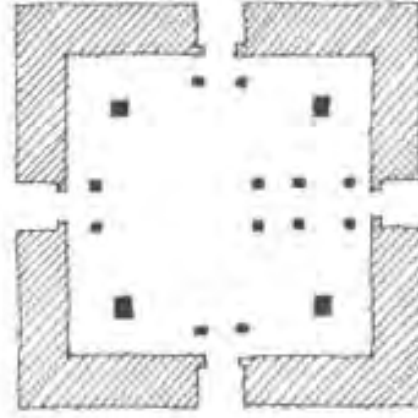
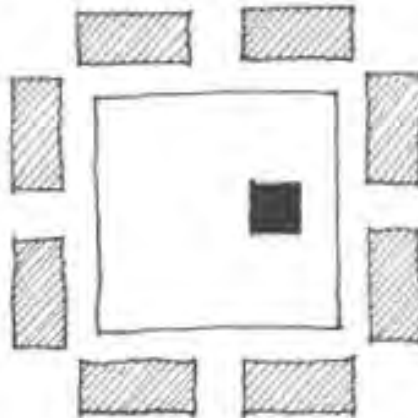
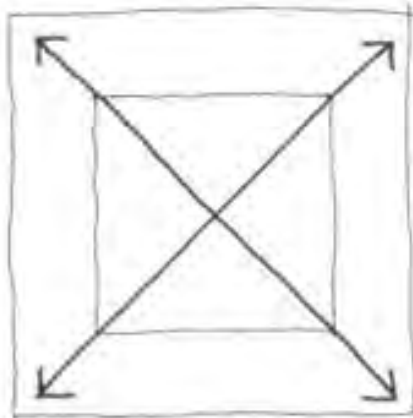
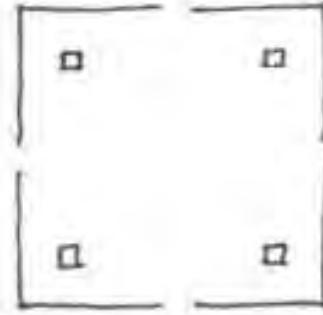
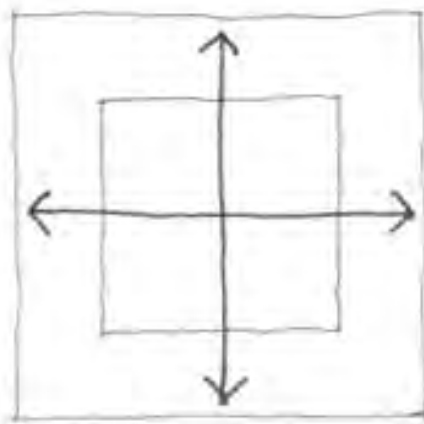
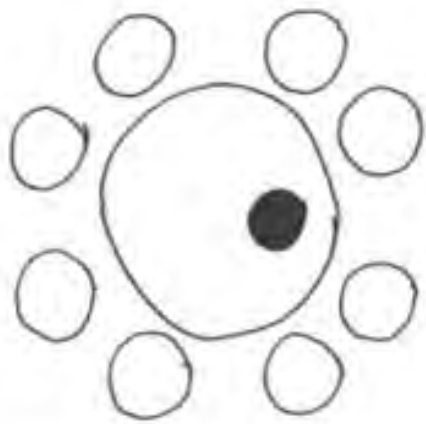


Your diagrams should be of **light / shadow**; **circulation (pedestrian, bike, etc)**; **materials**; **other things you observe**.



To coalesce diagram information into a design proposal, drawings must be schematic to start.

This allows you, the designer, to see things abstractly and position elements relative to one another without committing to final sizes and shapes.

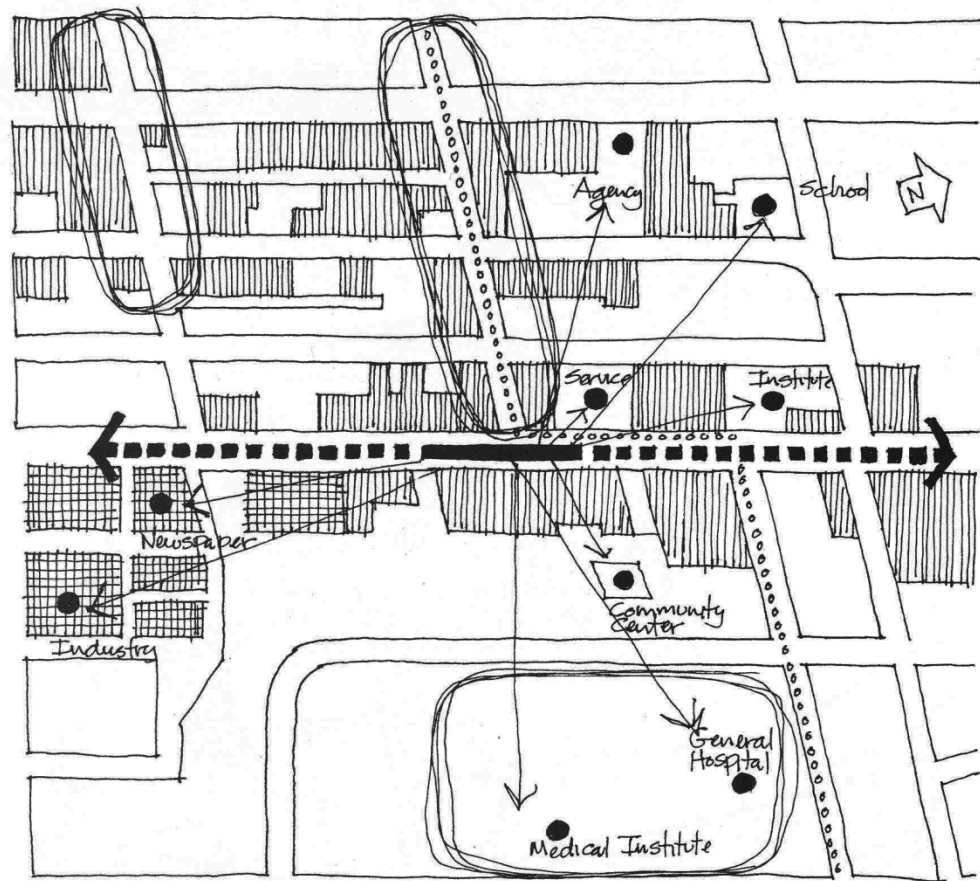


Diagrams that describe organizational principles can be useful.

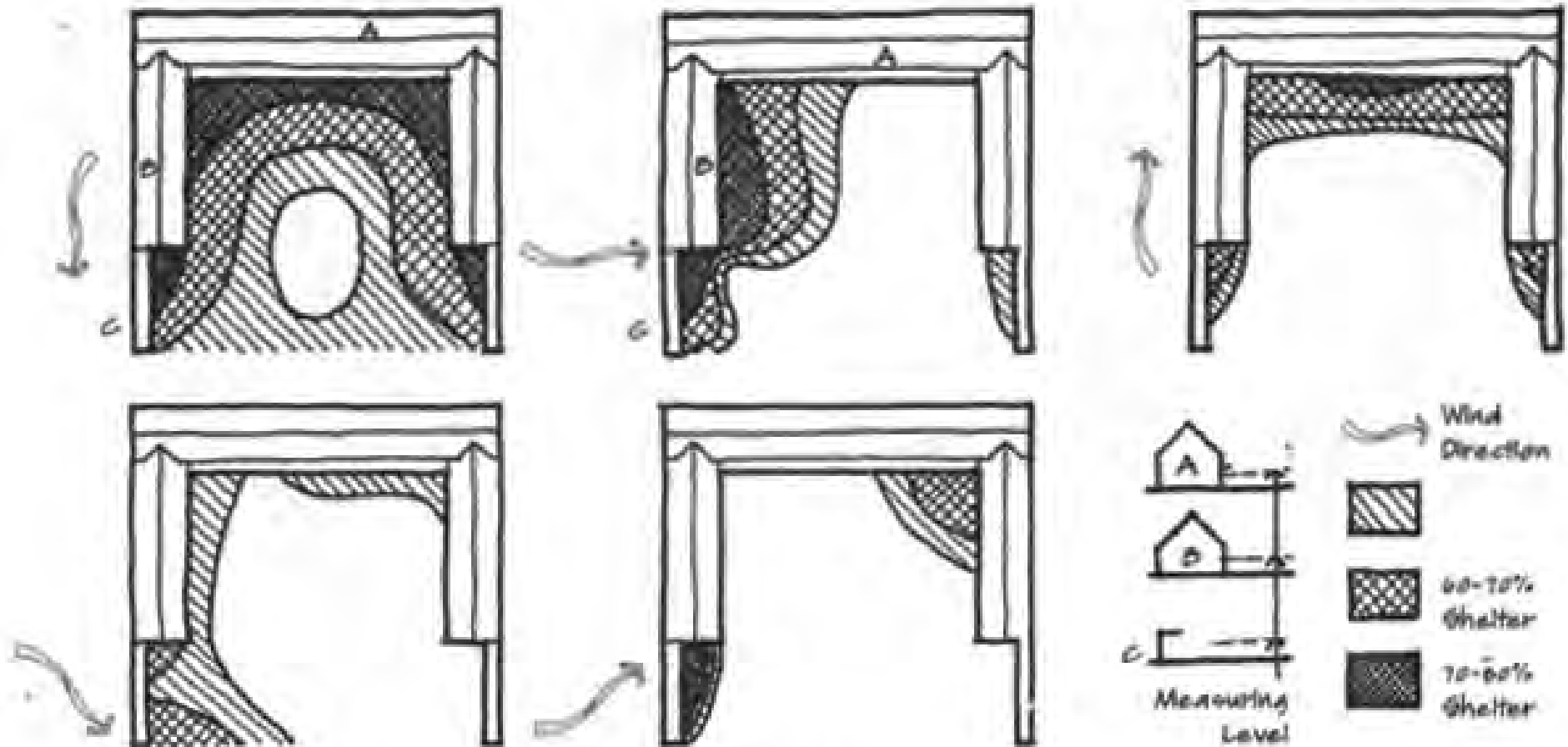
Note that the inclusion of some context (ie, the exterior walls of the building) is necessary to have a better sense of what is being shown in these abstract drawings.



Urban and site diagrams allow us to explore related spaces and zones on a much larger scale.



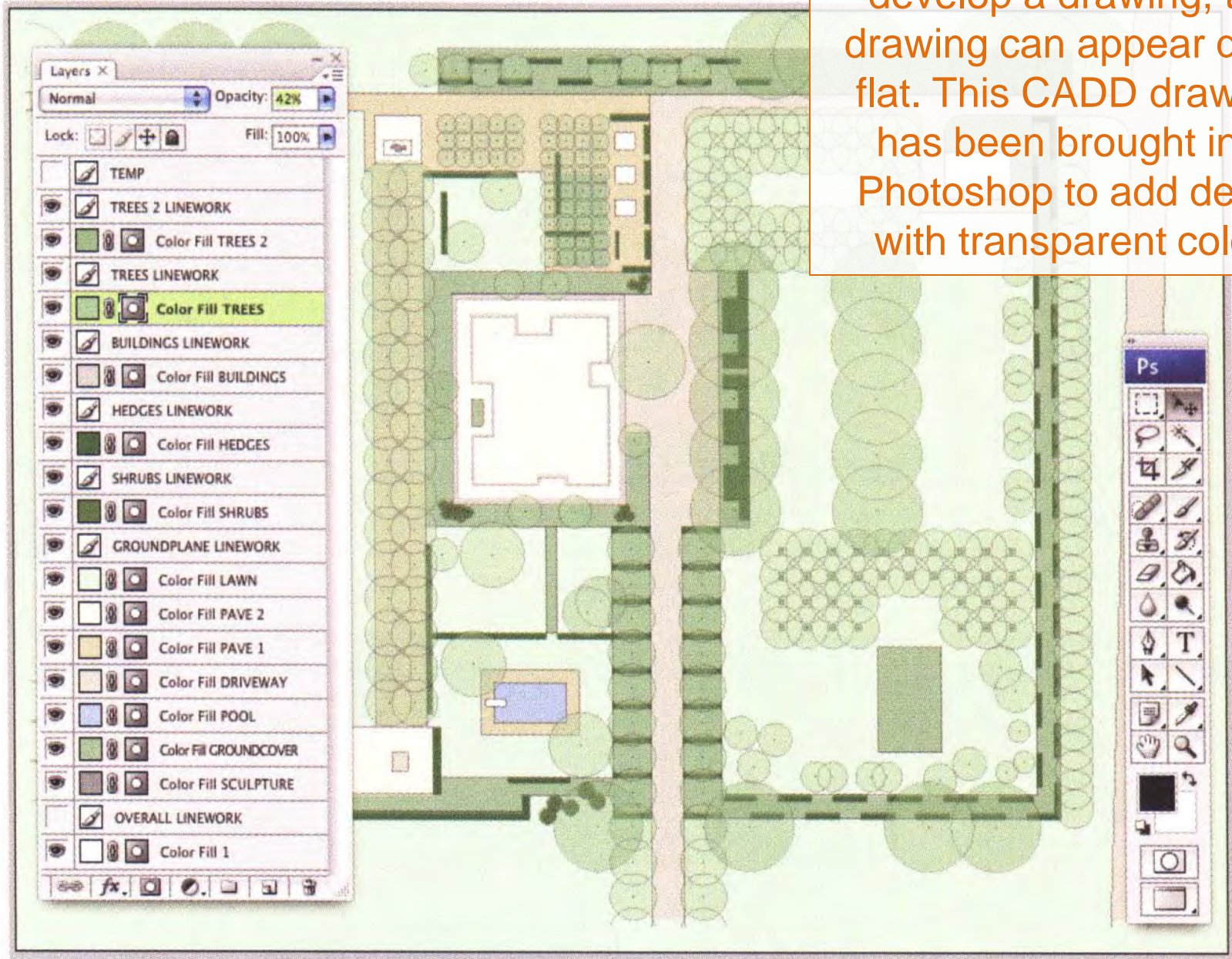
Analysis of existing conditions should include sun, shade and wind patterns to assess the potential for siting and orienting a new design.



Develop 3 digital diagrams using AutoCAD linework and Photoshop transparent color. These drawings are to be plotted on vellum as overlays on copies of the satellite photo. Attend lab to learn how to plot on vellum.



If using only AutoCAD to develop a drawing, the drawing can appear quite flat. This CADD drawing has been brought into Photoshop to add depth with transparent color.



A combination of digital elements, such as a CADD base, and hand-drawn elements add depth to this diagram. In addition, color can be added in Photoshop as transparent layers to provide additional design info.

palmer park
children's garden
robert reich school of landscape architecture [LSU]
megan colwart LA 5001



By adding detail to only the site in question, attention is focused on the important areas of a drawing.

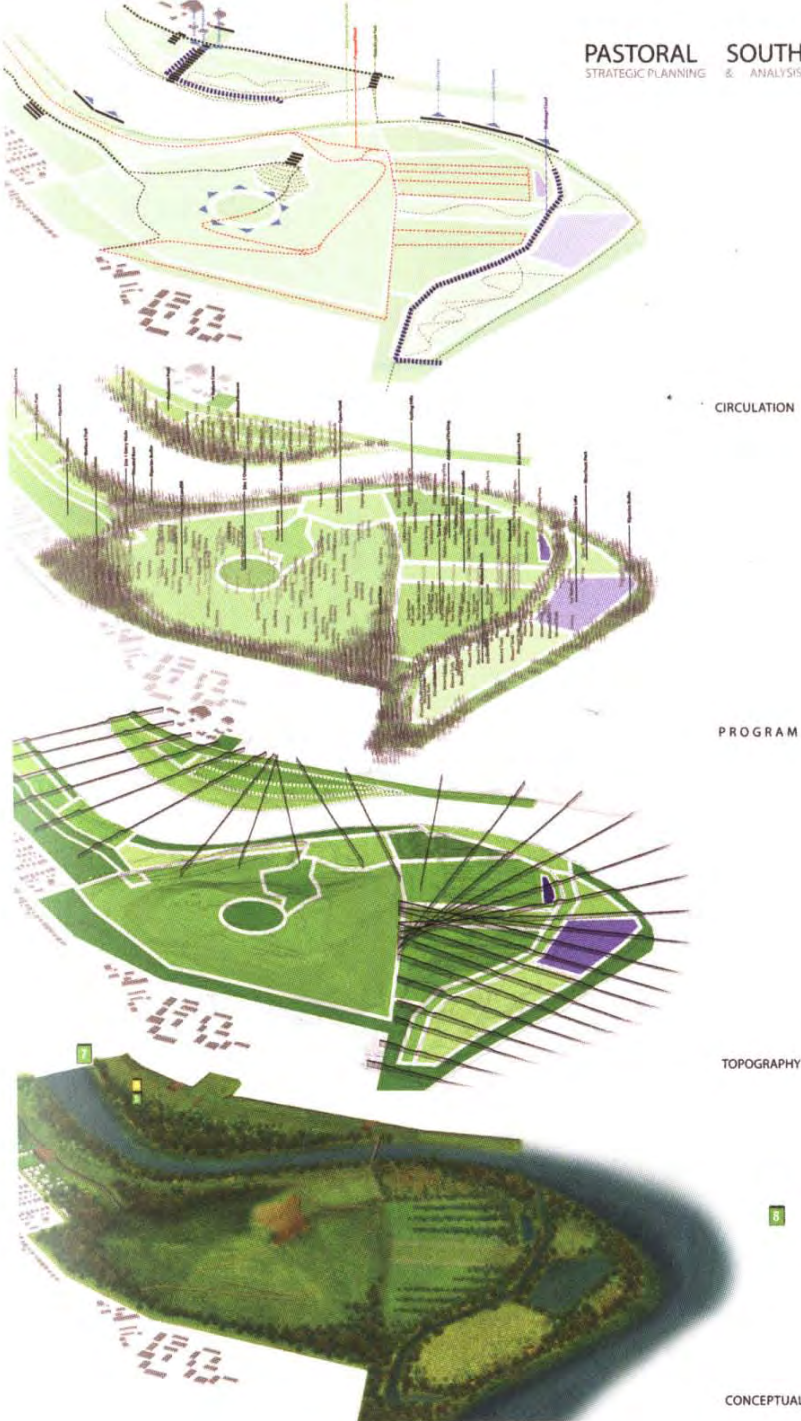
Context here is shown as black and white lines only – it's informational but graphically falls into the background.

Craft is as important as in a hand drawing.

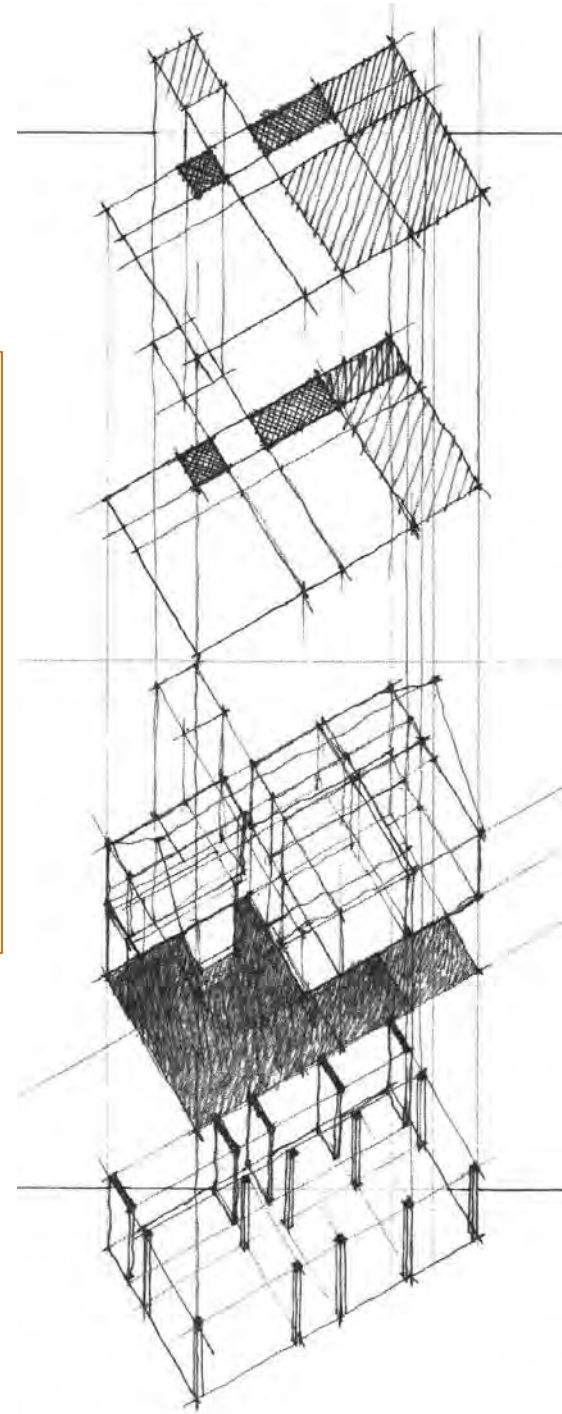




By providing a satellite photo as an underlay (in your case, as a print on a separate sheet of bond paper), additional layers on information are presented.



By using
transparent
overlays, we can
develop layered
diagrams that
suggest three-
dimensionality
without actually
being 3D.



Texture, in addition to color, can increase interest in a drawing. This can be developed through Photoshop linework, AutoCAD freehand linework, or photo imagery.

