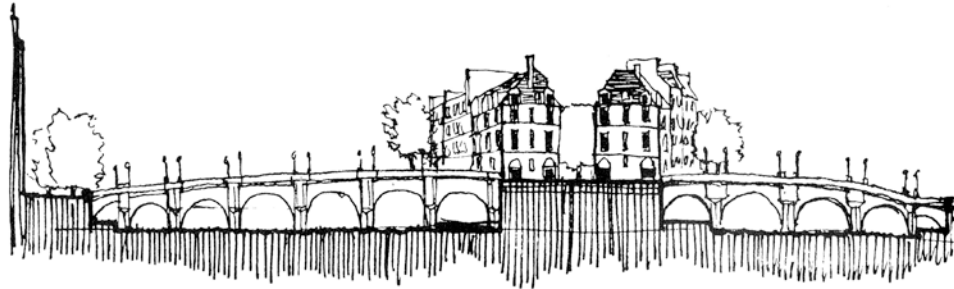


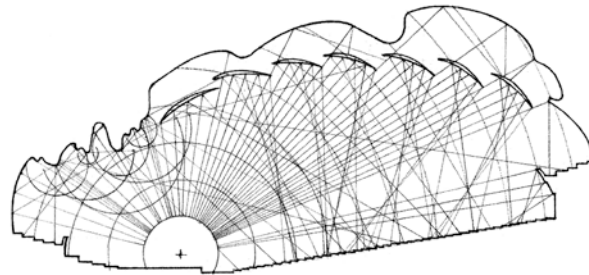
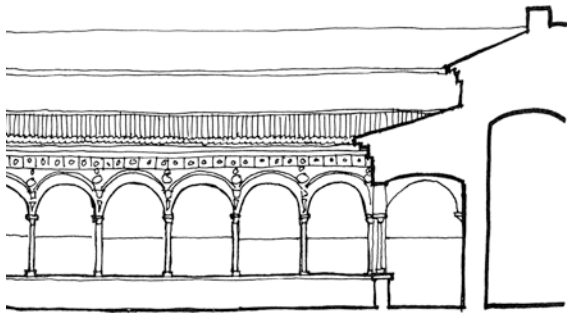
Course Number and Title: ARCH 151 / Architectural Drawing I / 3.0 Credits

Instructor: Lauren Karwoski Magee



WEEK 5 IN-CLASS ASSIGNMENT: Using the Section Drawing to reveal Space

The key to developing a successful section drawing is to remember that although you are drawing the objects you see, what this actually reveals is the space that is contained by them. The objective of this in-class exercise is to carefully craft a section cut through selected spaces as a method of revealing the *volume* of that spatial experience and the aspects of the environment that affect it.



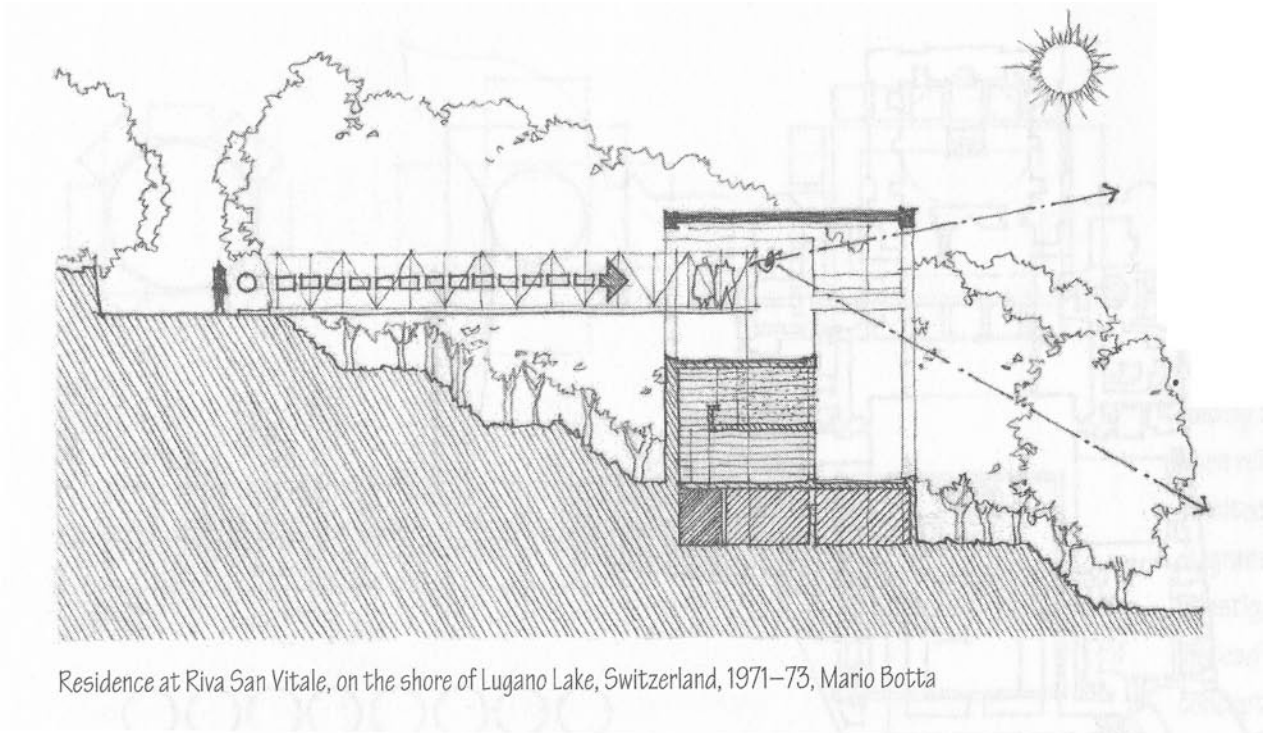
Concert and Convention Hall, Helsinki, 1967-71, Alvar Aalto. Acoustic study of the concert hall.

Working in your *small sketchbook*, create *pure line* drawings that utilize a section drawing technique to reveal the *volume of the contained space*. Space may be contained by building or plantings or may be suggested by an uninterrupted and extended ground plane.

- These drawings must be done in *black pen* using your Pilot Pen.
- The section cut line must be a continuous primary line weight that reveals the height of the spatial envelope on both sides of the space as well as the ground plane you are standing on.
- Use a lighter lineweight (thinner pen) to represent background information.
- Material textures and other relevant changes in the primary section cut plane must be represented.
- These drawings must be observations of *exterior spaces* from 2 of the following locations:
 - Race Street Hall, including the outdoor plaza
 - Within the community garden at 33rd and Race
 - Along the east-west walkway running between Korman and Pearlstein
 - The area just east of Creese Student Center

Assignment Due: 2pm, Tuesday Oct 27 (Section 1) or Thursday Oct 29 (Section 2)

- Scan your drawings as 300dpi grayscale images, saved as .JPGs and email them to DrexelDrawing@gmail.com
- Be prepared to discuss your drafted drawings and your process in the next class.



Residence at Riva San Vitale, on the shore of Lugano Lake, Switzerland, 1971–73, Mario Botta