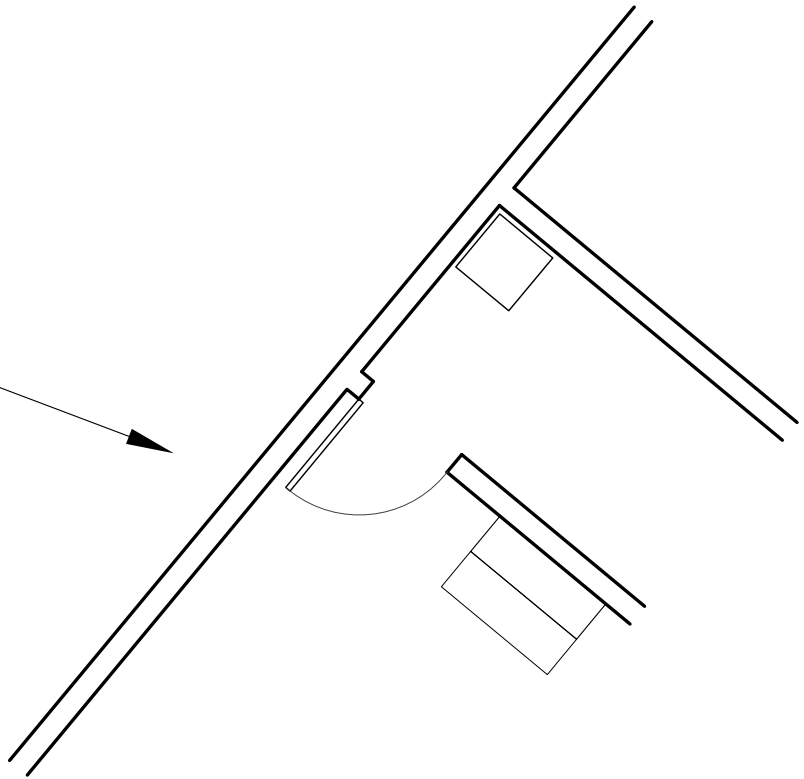
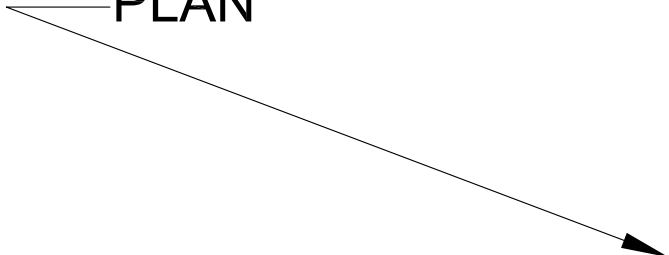
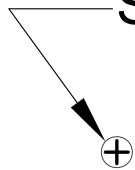


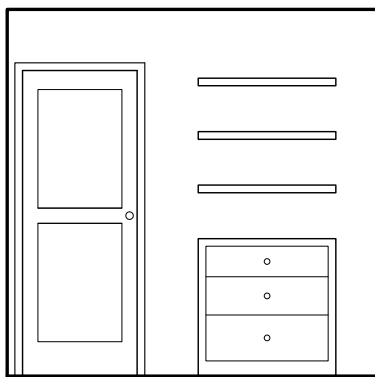
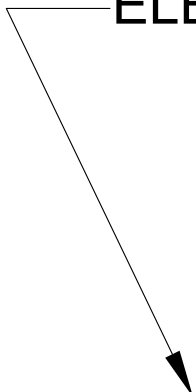
PLAN



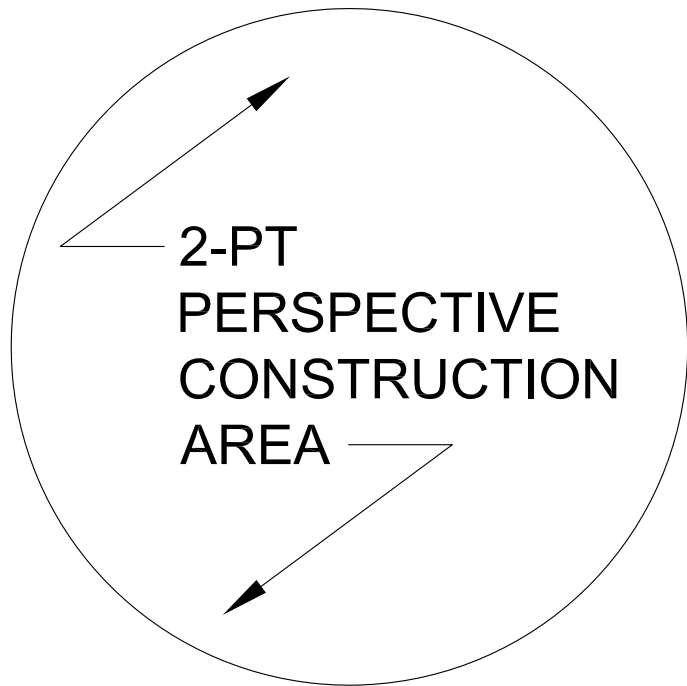
STATION POINT

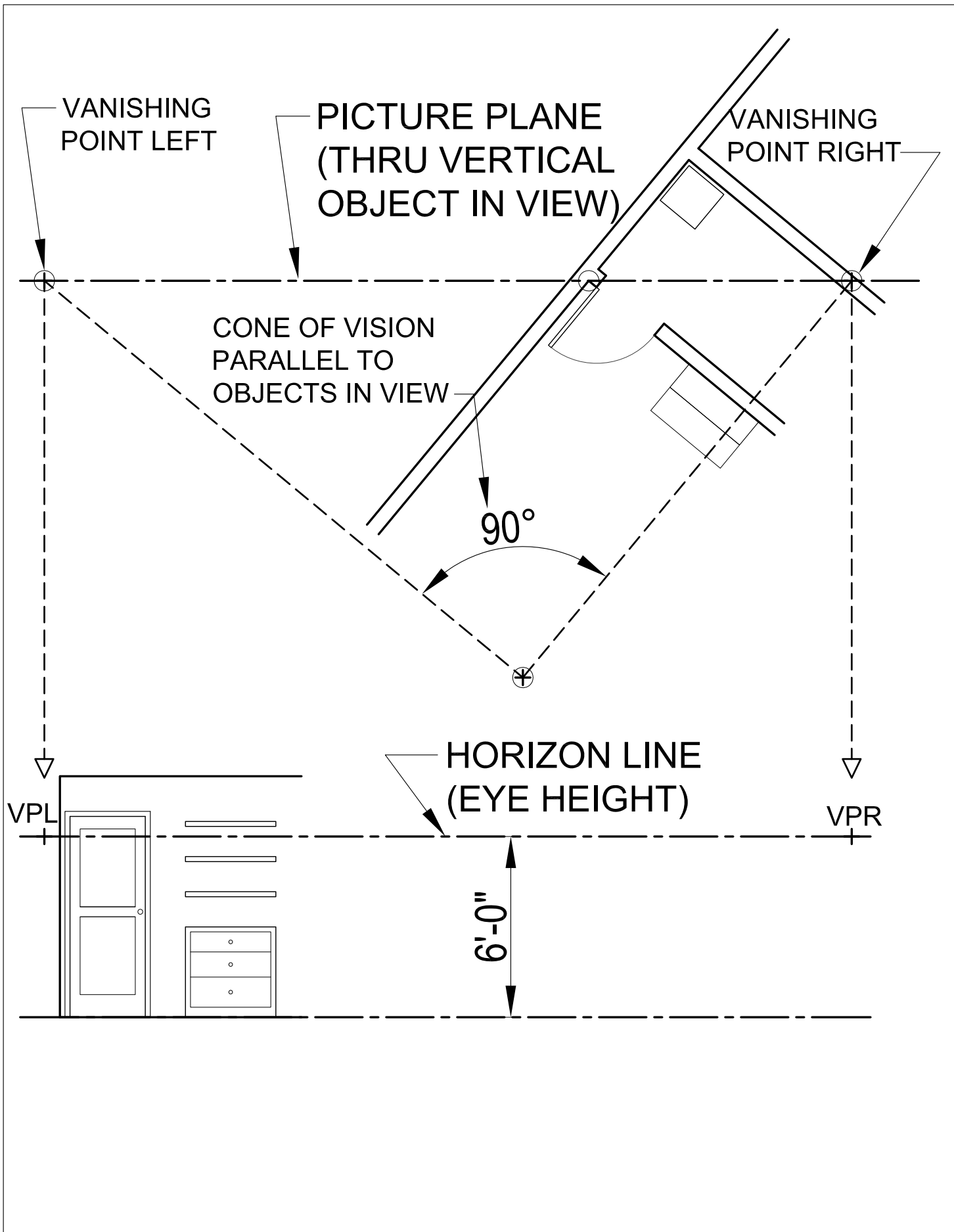


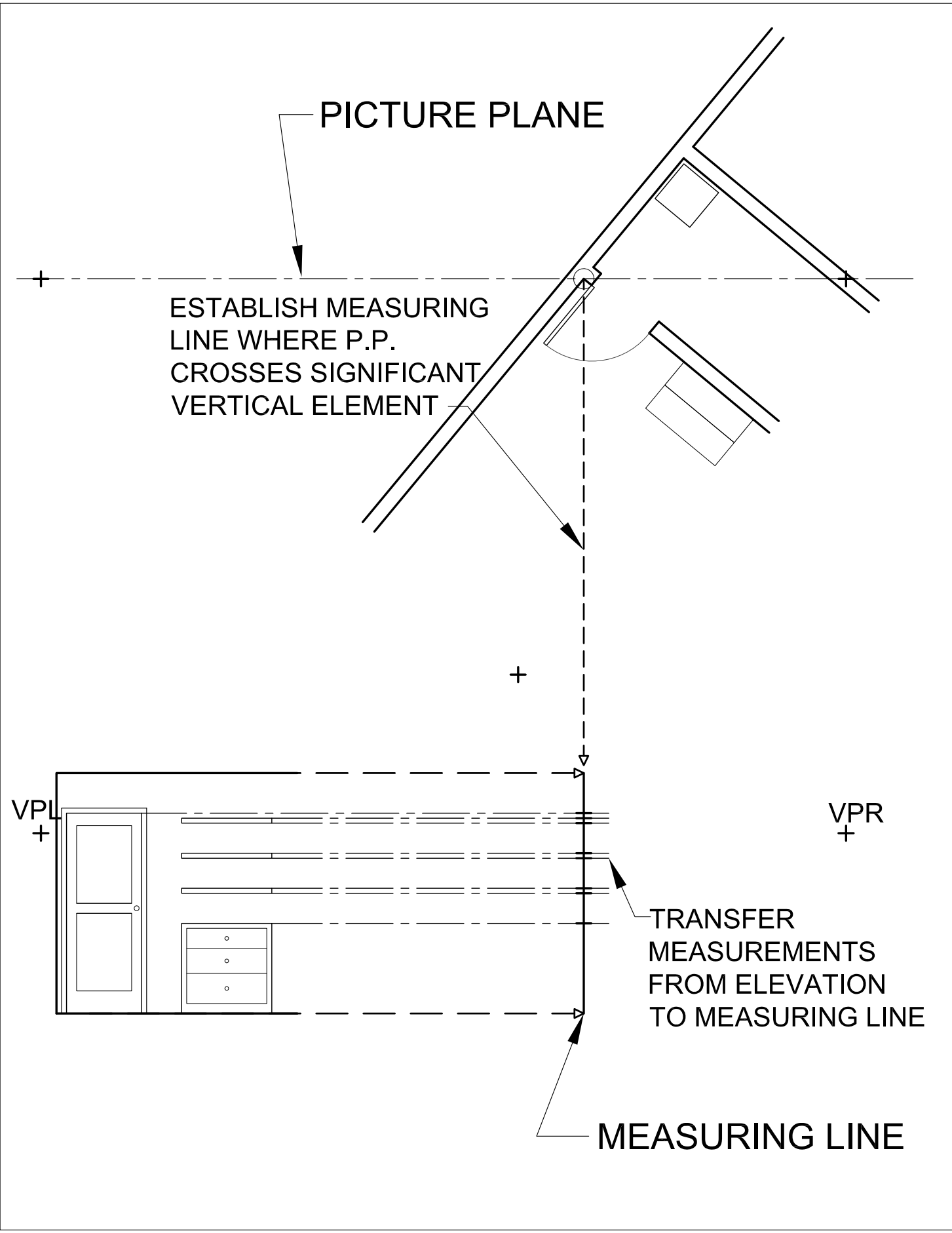
ELEVATION



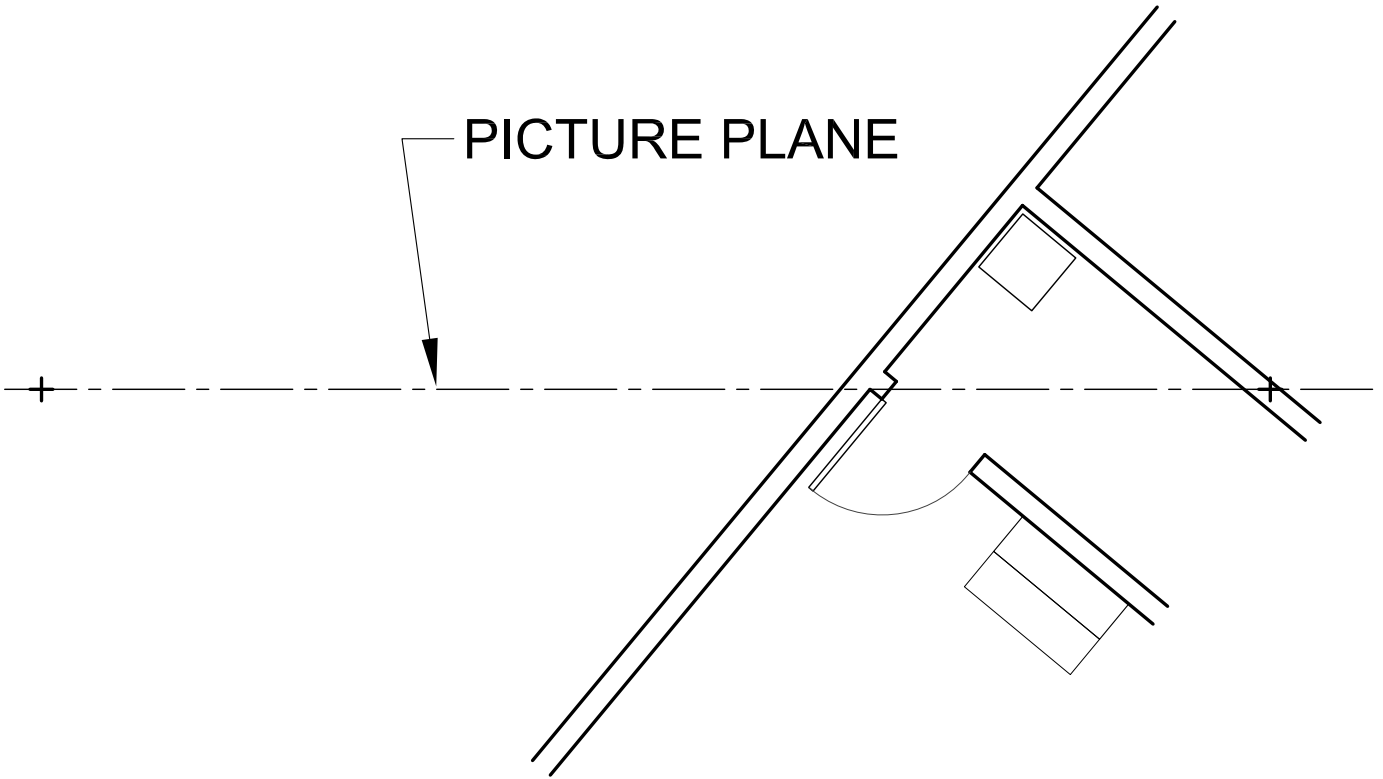
2-PT
PERSPECTIVE
CONSTRUCTION
AREA



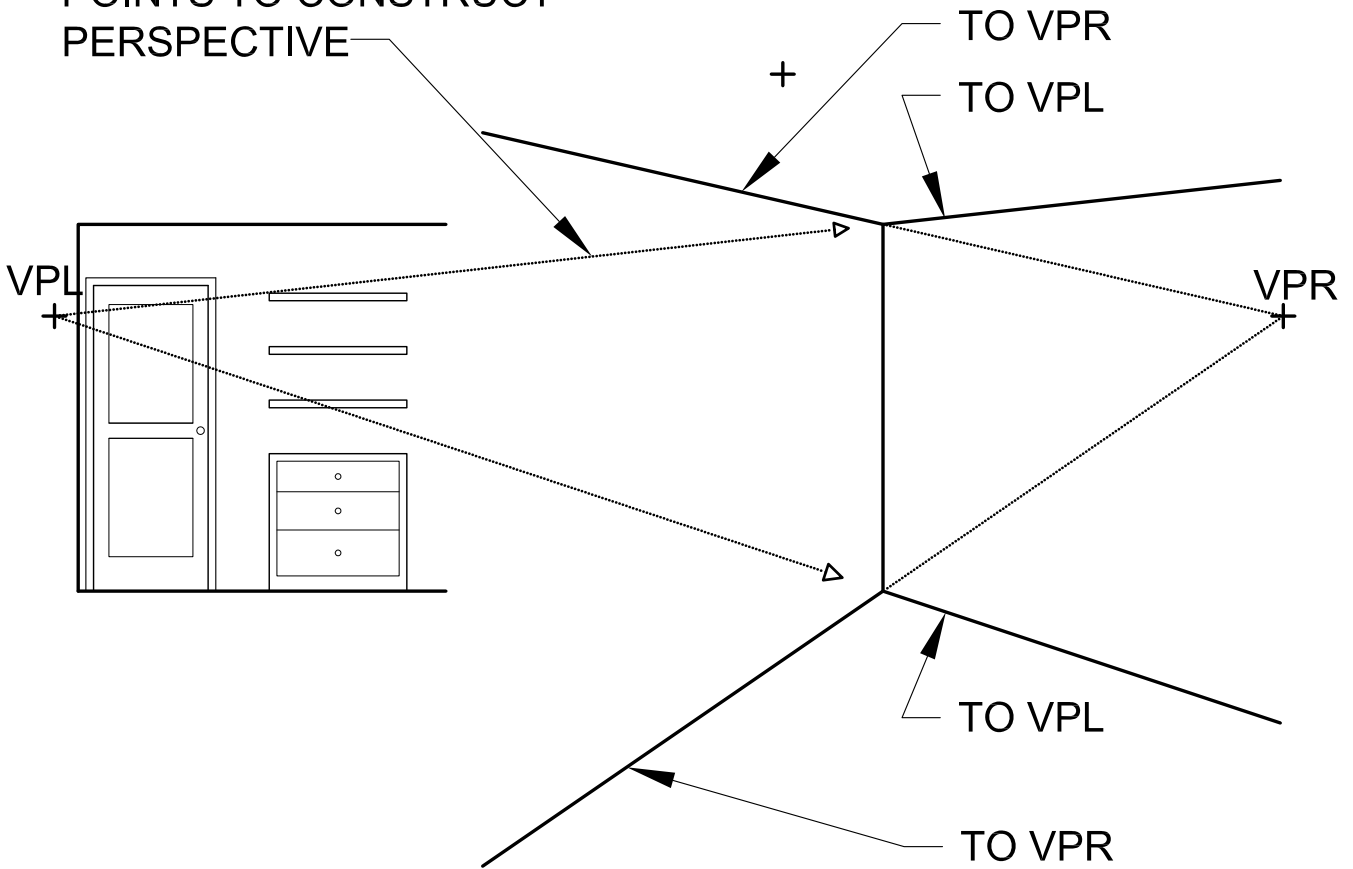


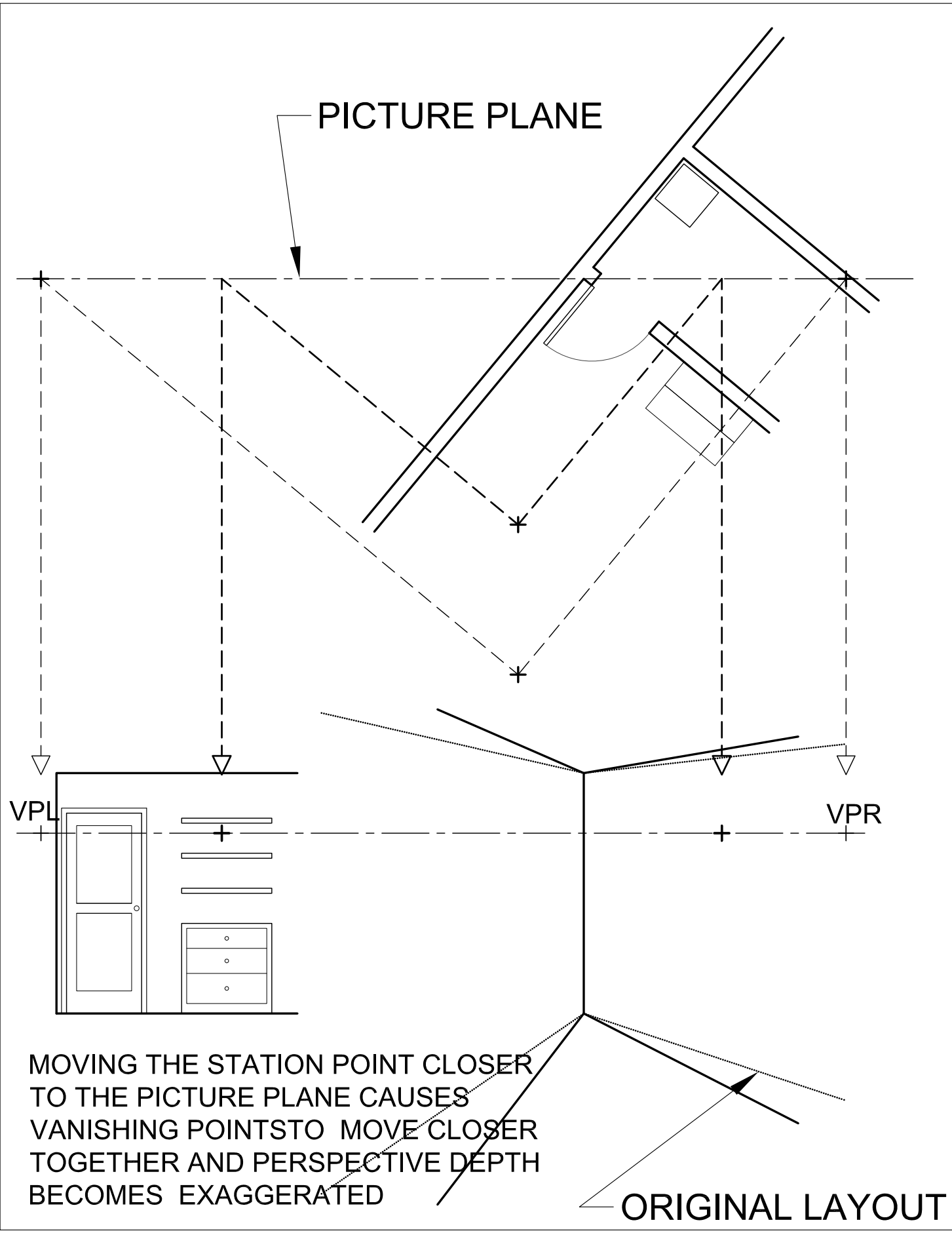


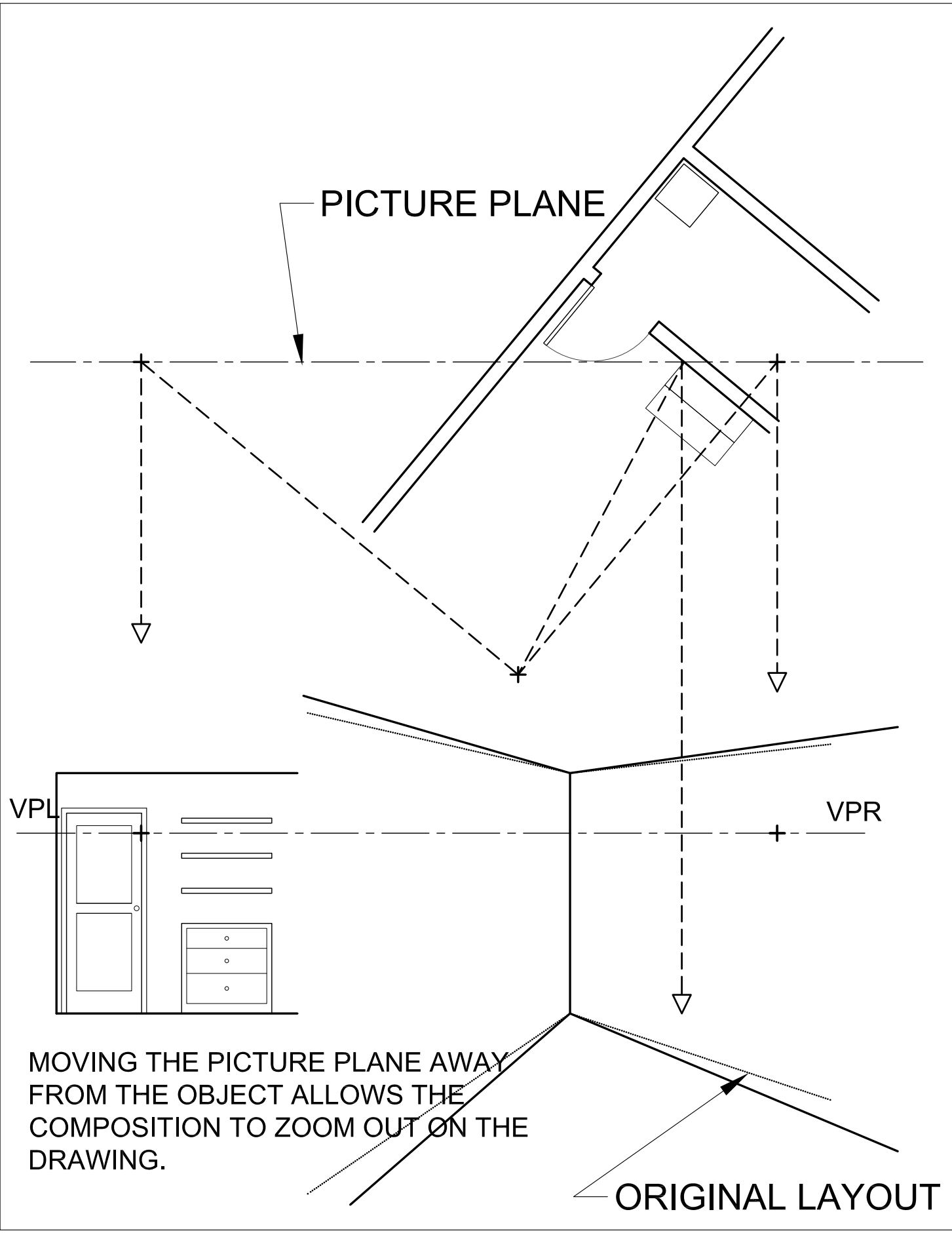
PICTURE PLANE



CONNECT TO VANISHING POINTS TO CONSTRUCT PERSPECTIVE







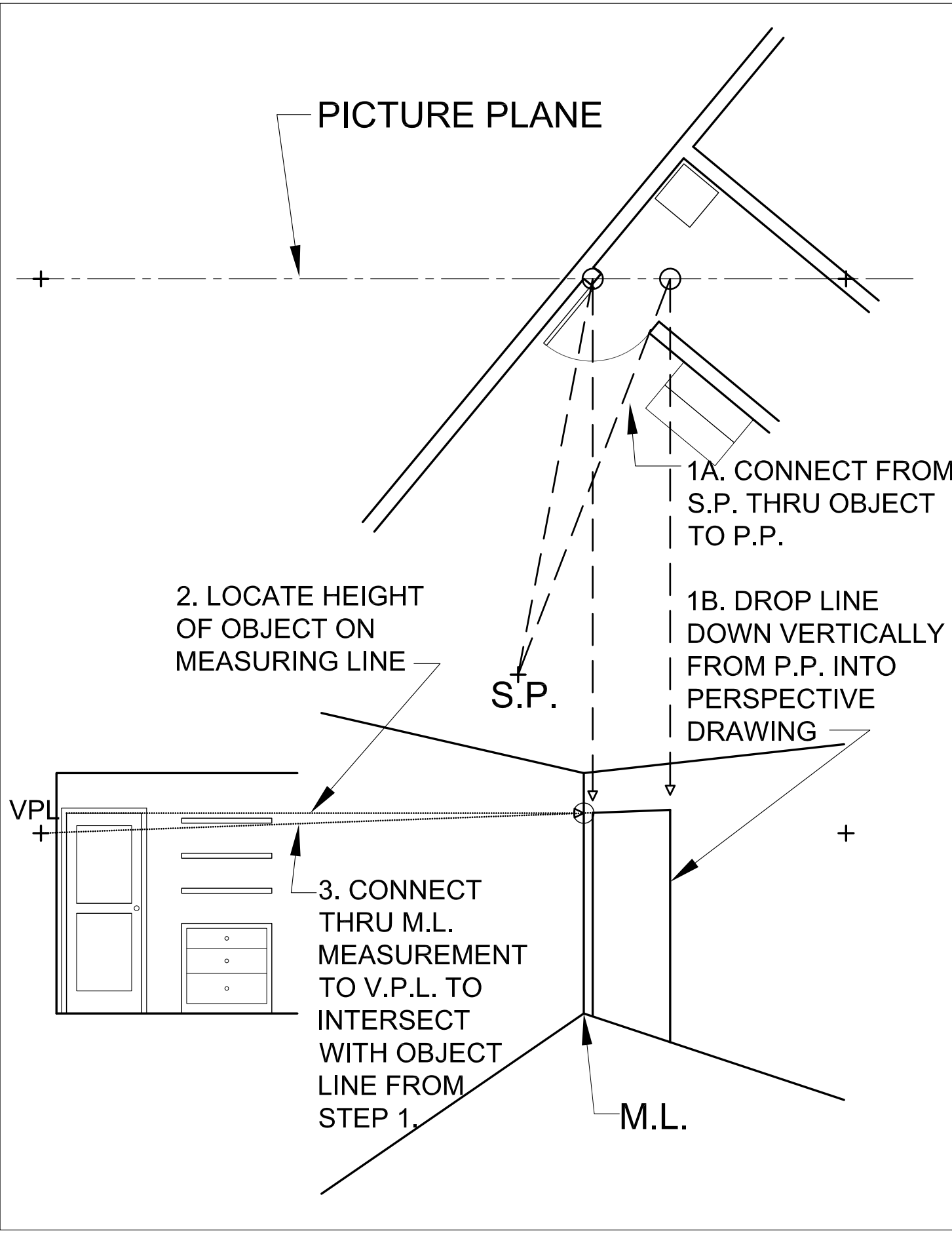
PICTURE PLANE

VPL

VPR

MOVING THE PICTURE PLANE AWAY FROM THE OBJECT ALLOWS THE COMPOSITION TO ZOOM OUT ON THE DRAWING.

ORIGINAL LAYOUT



PICTURE PLANE

1A. CONNECT FROM S.P. THRU OBJECT TO P.P.

1B. DROP LINE DOWN VERTICALLY FROM P.P. INTO PERSPECTIVE DRAWING

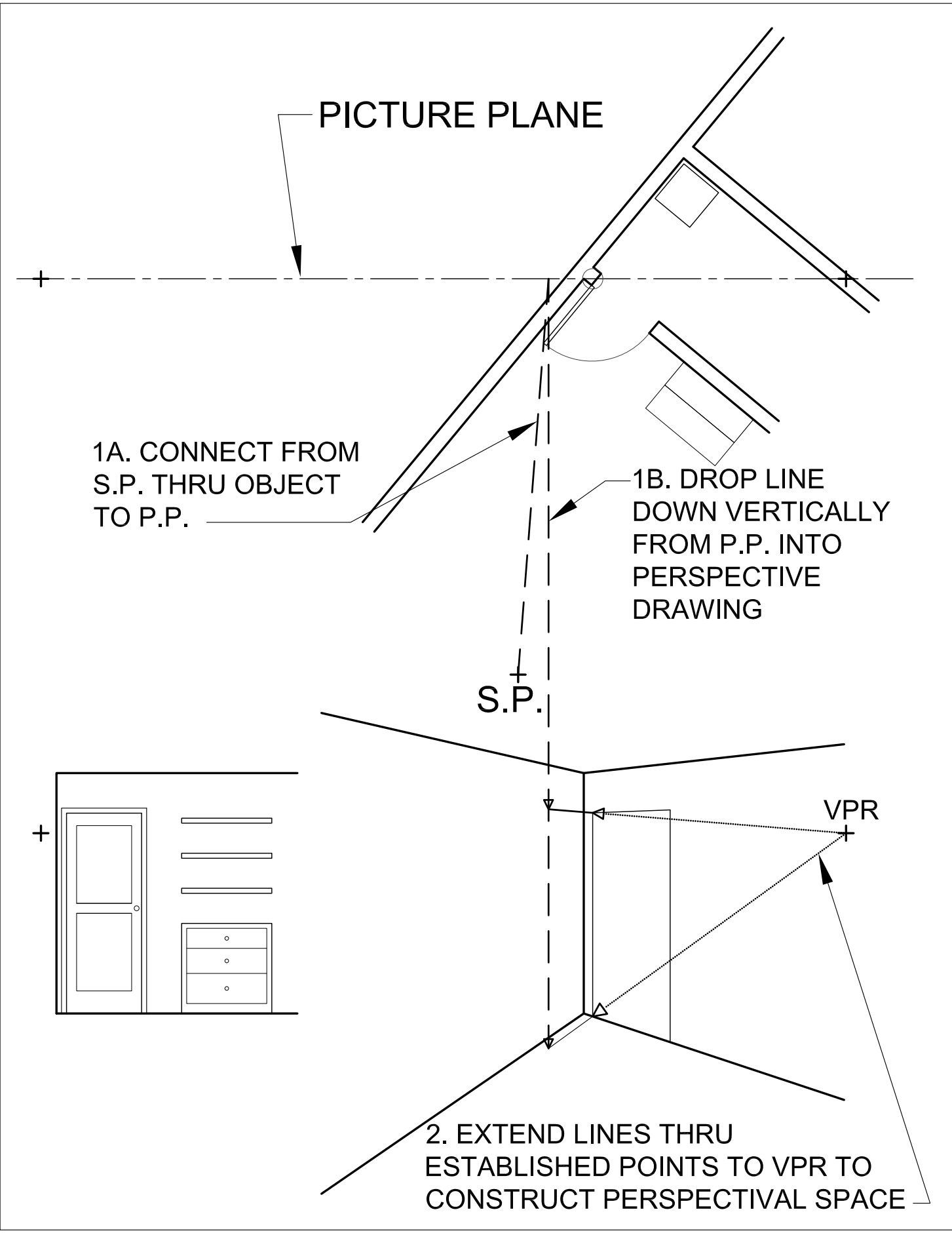
2. LOCATE HEIGHT OF OBJECT ON MEASURING LINE

3. CONNECT THRU M.L. MEASUREMENT TO V.P.L. TO INTERSECT WITH OBJECT LINE FROM STEP 1.

S.P.

M.L.

V.P.L.



PICTURE PLANE

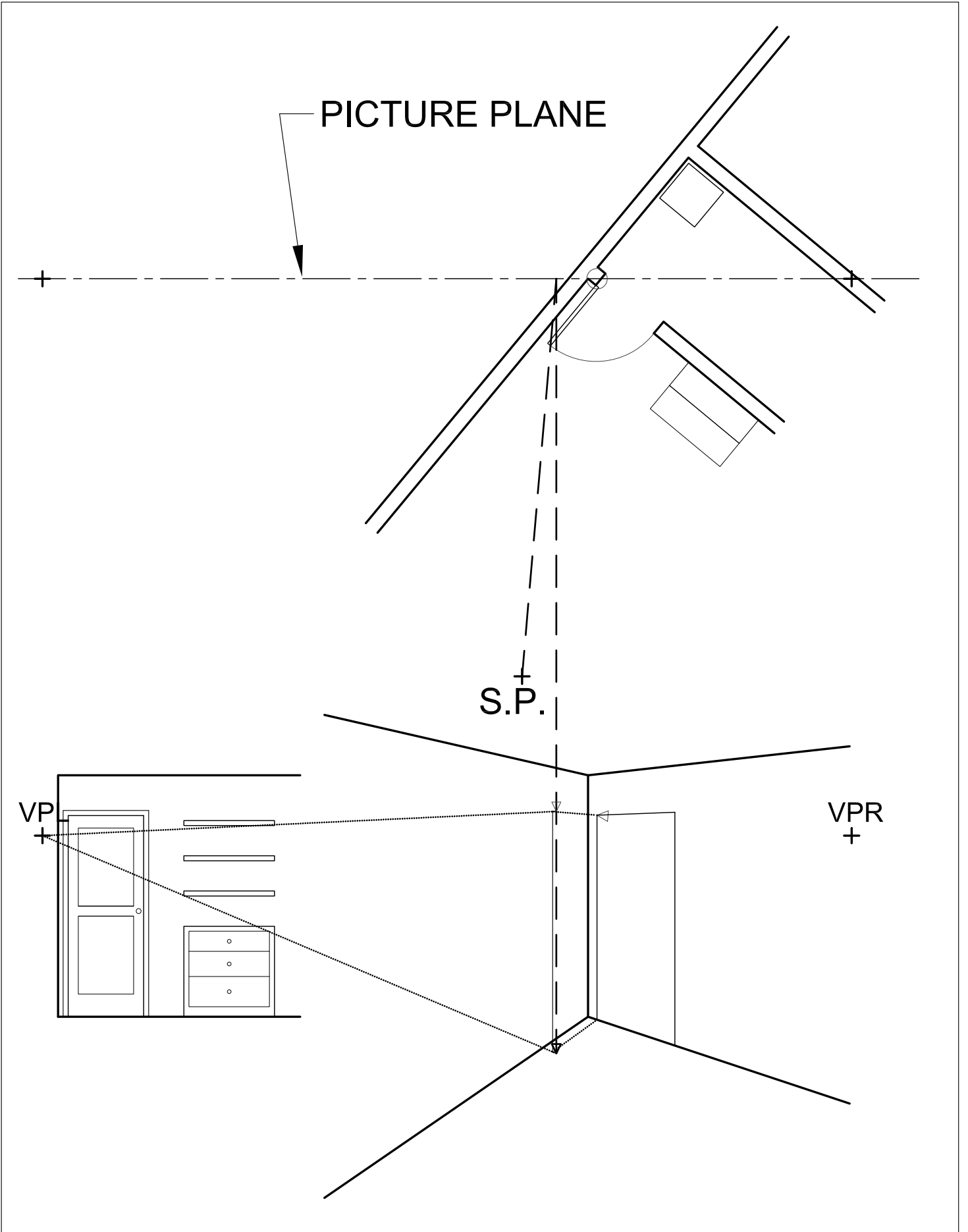
1A. CONNECT FROM
S.P. THRU OBJECT
TO P.P.

1B. DROP LINE
DOWN VERTICALLY
FROM P.P. INTO
PERSPECTIVE
DRAWING

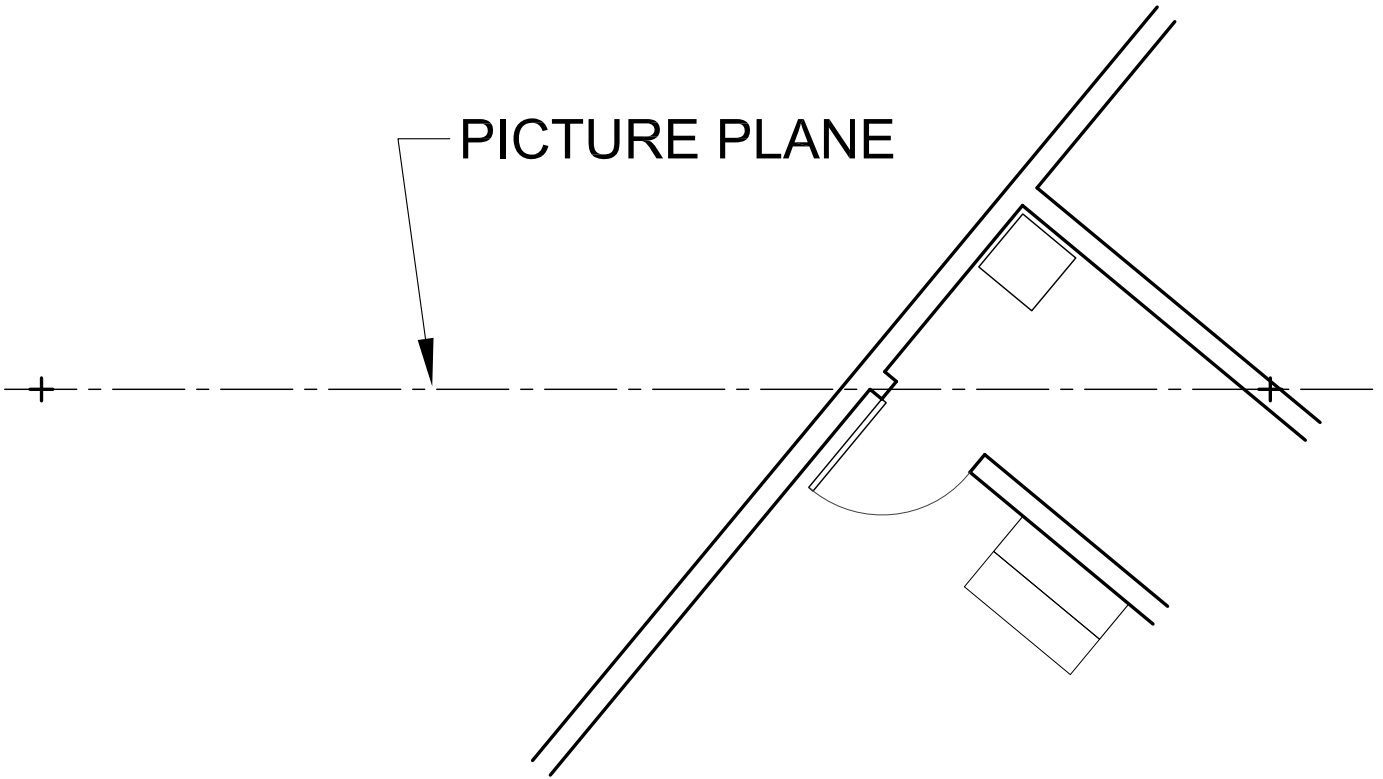
S.P.

V.P.R

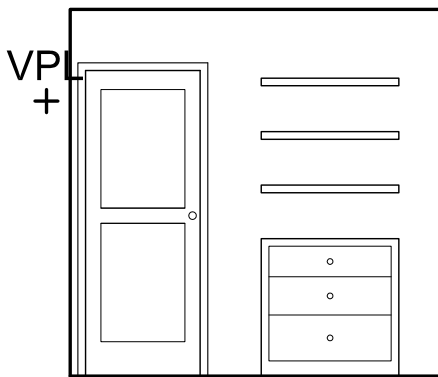
2. EXTEND LINES THRU
ESTABLISHED POINTS TO V.P. TO
CONSTRUCT PERSPECTIVAL SPACE



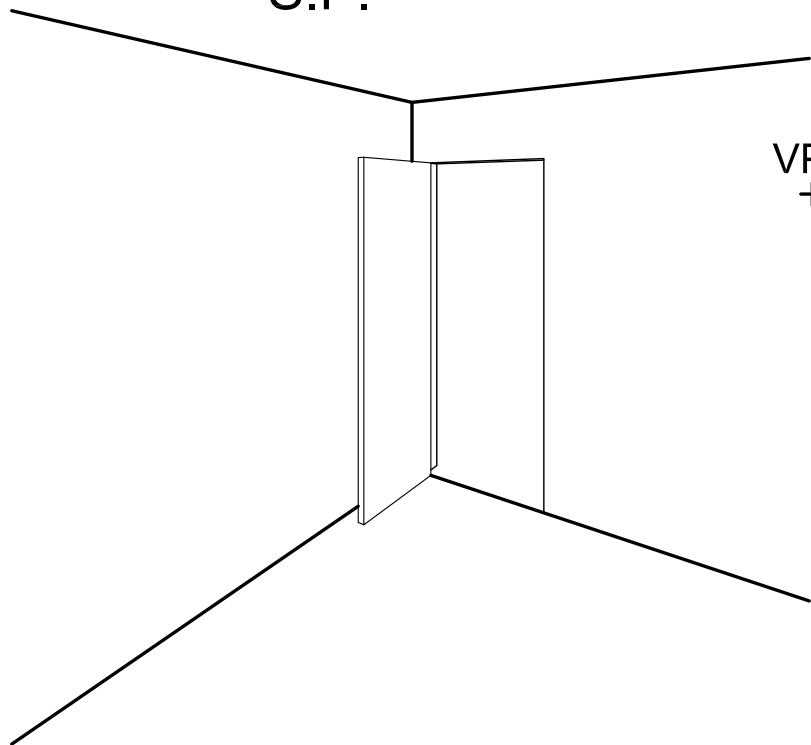
PICTURE PLANE



S.P.



VPR



PICTURE PLANE

EXTEND LINES FROM S.P.
THRU P.P.

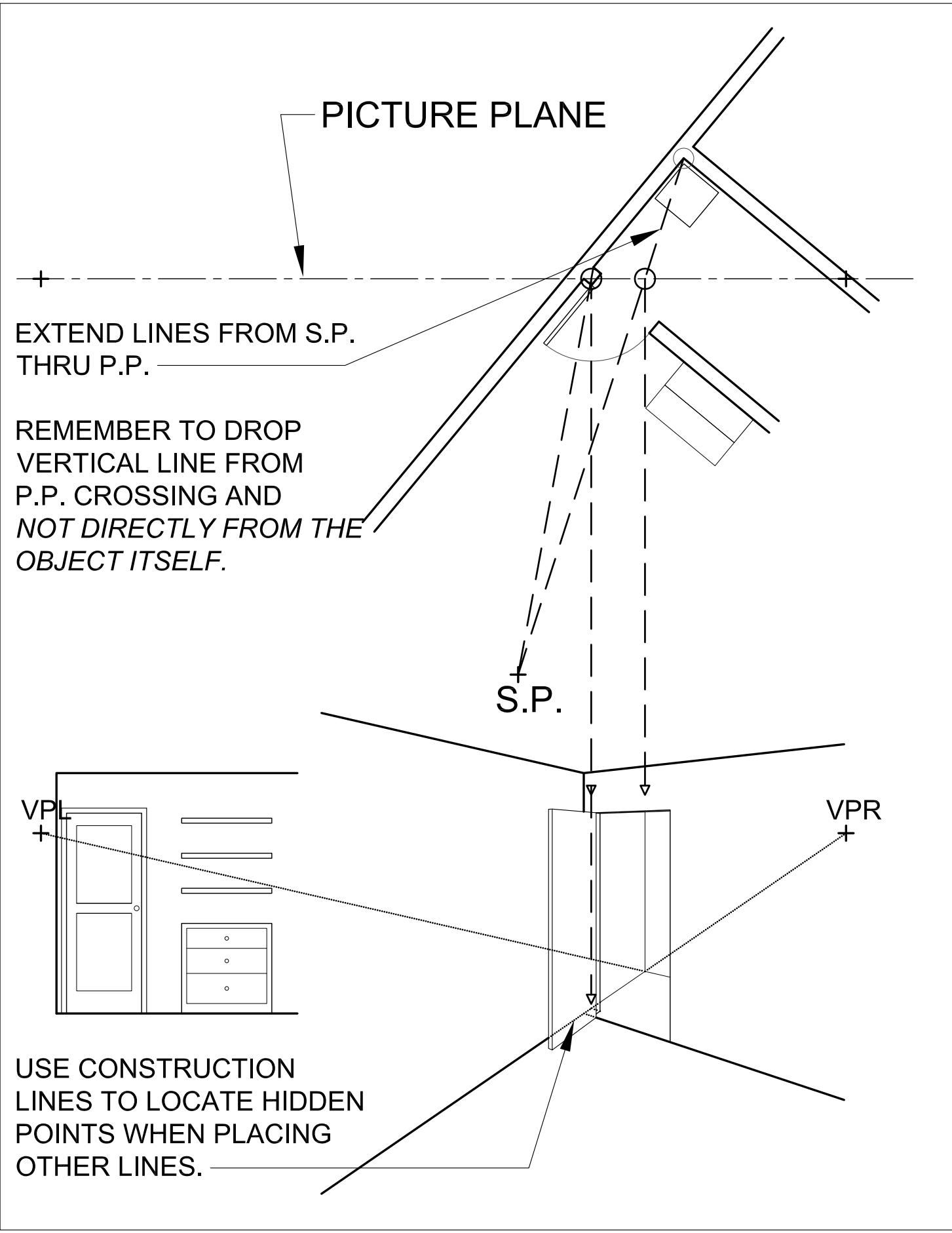
REMEMBER TO DROP
VERTICAL LINE FROM
P.P. CROSSING AND
*NOT DIRECTLY FROM THE
OBJECT ITSELF.*

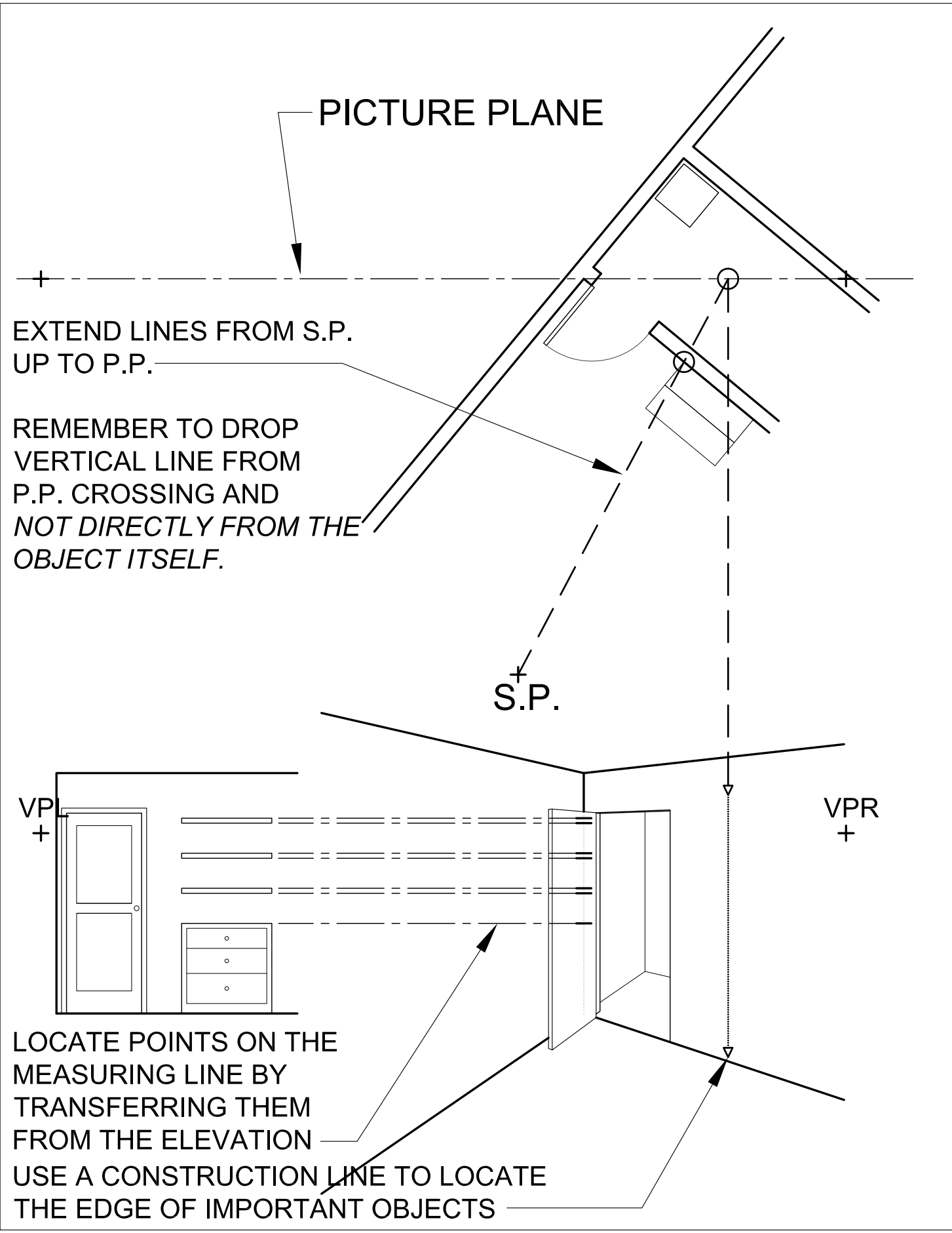
S.P.

VPL
+

VPR
+

USE CONSTRUCTION
LINES TO LOCATE HIDDEN
POINTS WHEN PLACING
OTHER LINES.





PICTURE PLANE

EXTEND LINES FROM S.P.
UP TO P.P.

REMEMBER TO DROP
VERTICAL LINE FROM
P.P. CROSSING AND
*NOT DIRECTLY FROM THE
OBJECT ITSELF.*

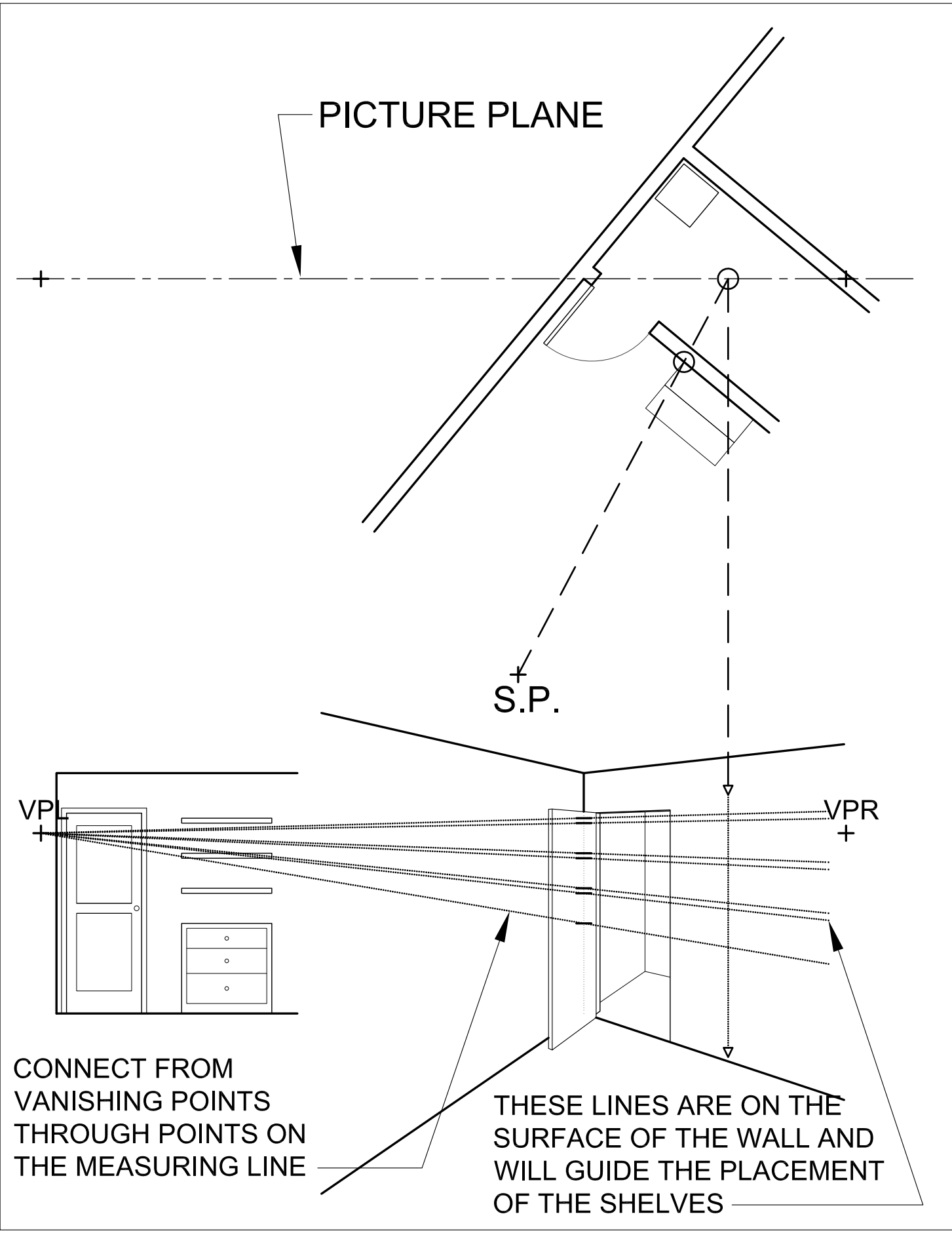
S.P.

VPI
+

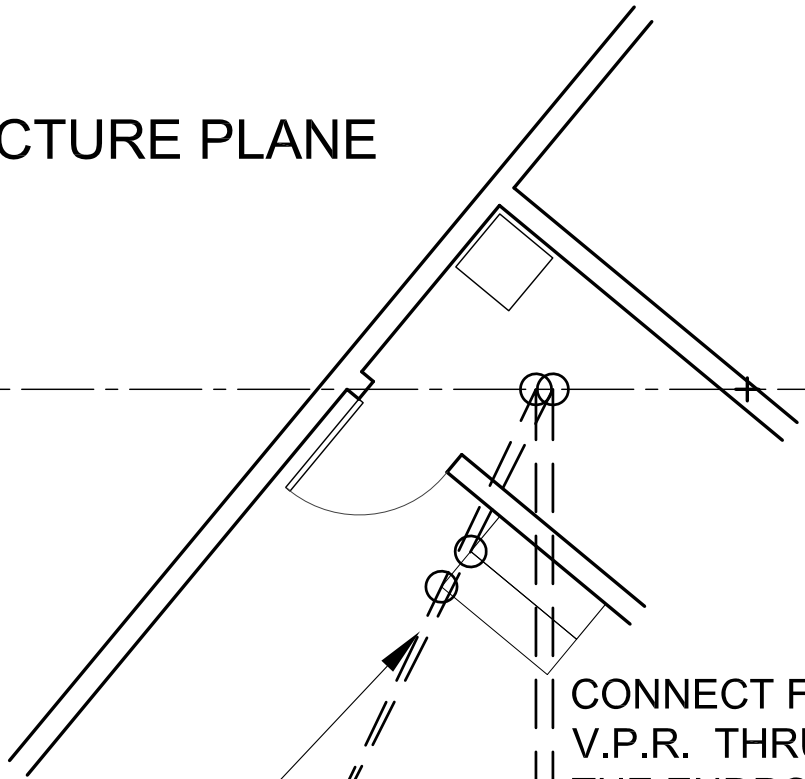
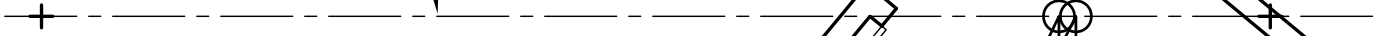
VPR
+

LOCATE POINTS ON THE
MEASURING LINE BY
TRANSFERRING THEM
FROM THE ELEVATION

USE A CONSTRUCTION LINE TO LOCATE
THE EDGE OF IMPORTANT OBJECTS



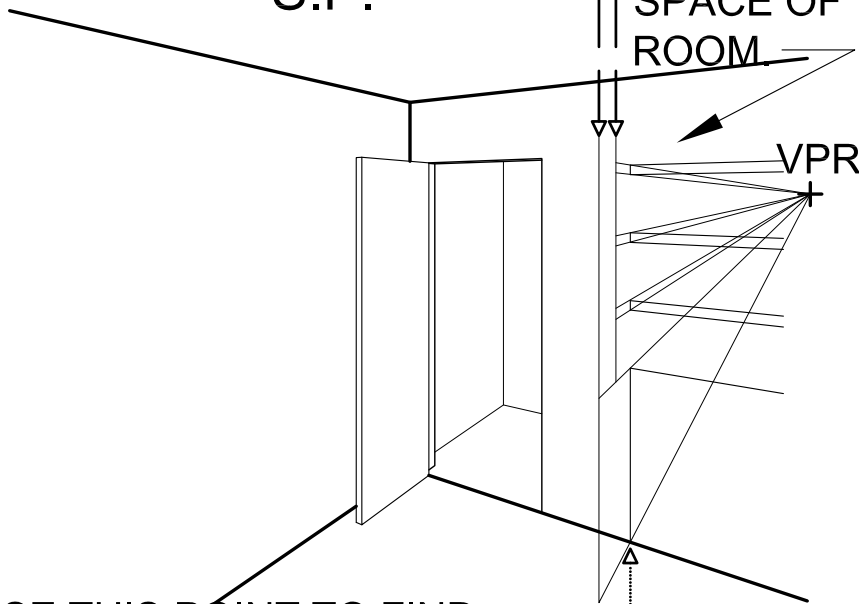
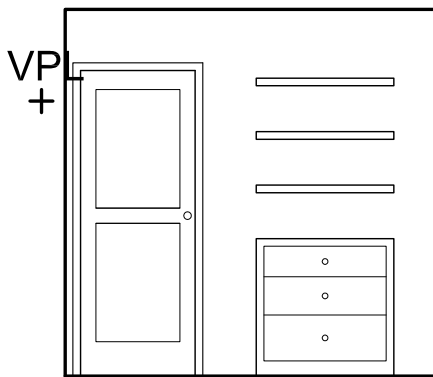
PICTURE PLANE



FIND THE OUTER SURFACE OF THE SHELVES AND DRESSER ON THE PLAN

S.P.

CONNECT FROM V.P.R. THRU THE ENDPOINTS OF THE SHELVES TO BRING THEM OUT INTO THE SPACE OF THE ROOM.



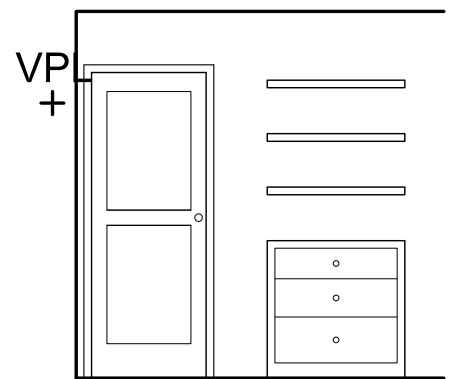
USE THIS POINT TO FIND THE CONNECTION OF THE DRESSER TO THE GROUND AT THE WALL

PICTURE PLANE

COMPLETE THE FORMS IN THE PROPER LINE WEIGHT.

REMEMBER TO USE A CONSTRUCTION LINE WEIGHT WHEN CONSTRUCTING A DRAWING SO NO ERASING IS NECESSARY.

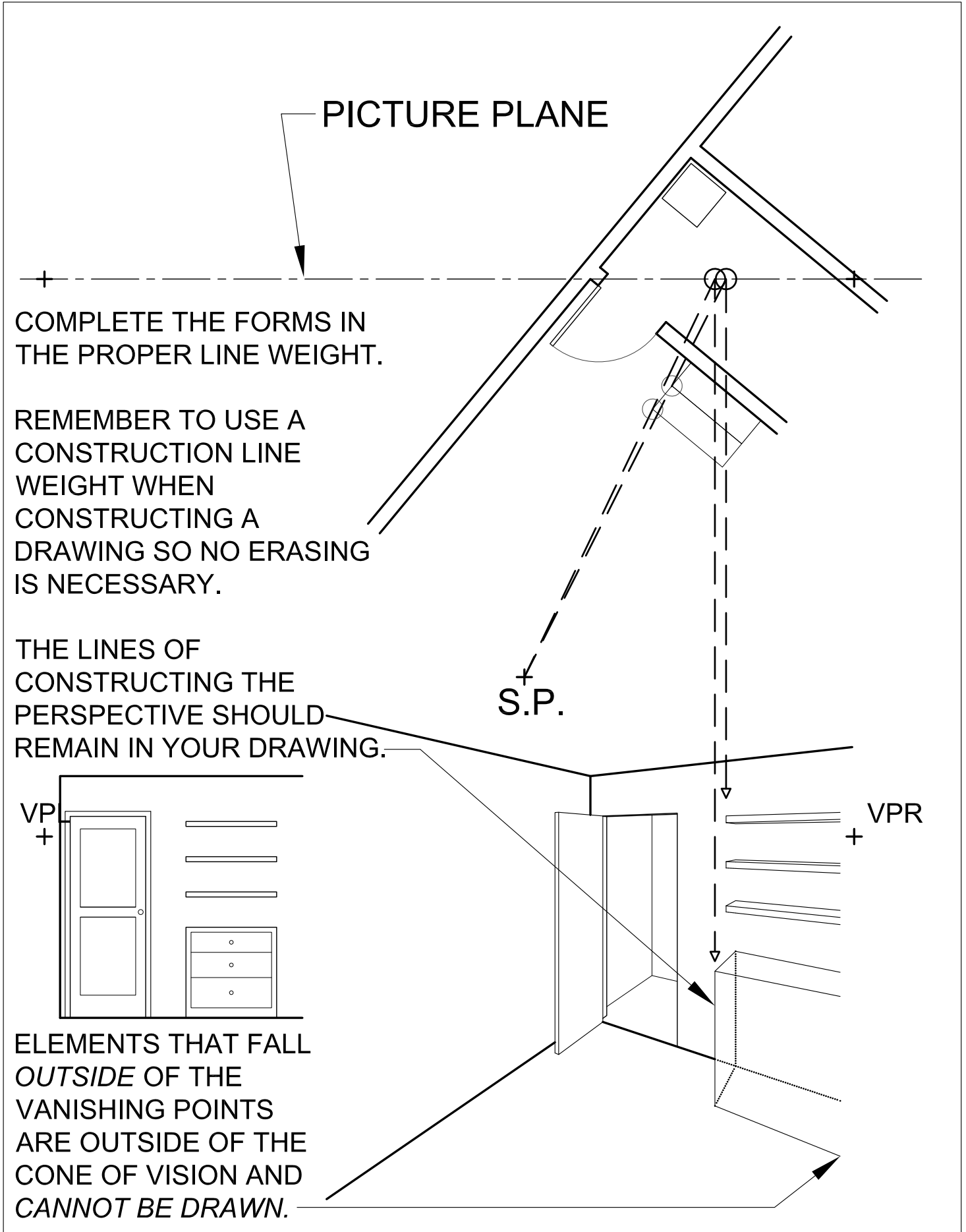
THE LINES OF CONSTRUCTING THE PERSPECTIVE SHOULD REMAIN IN YOUR DRAWING.



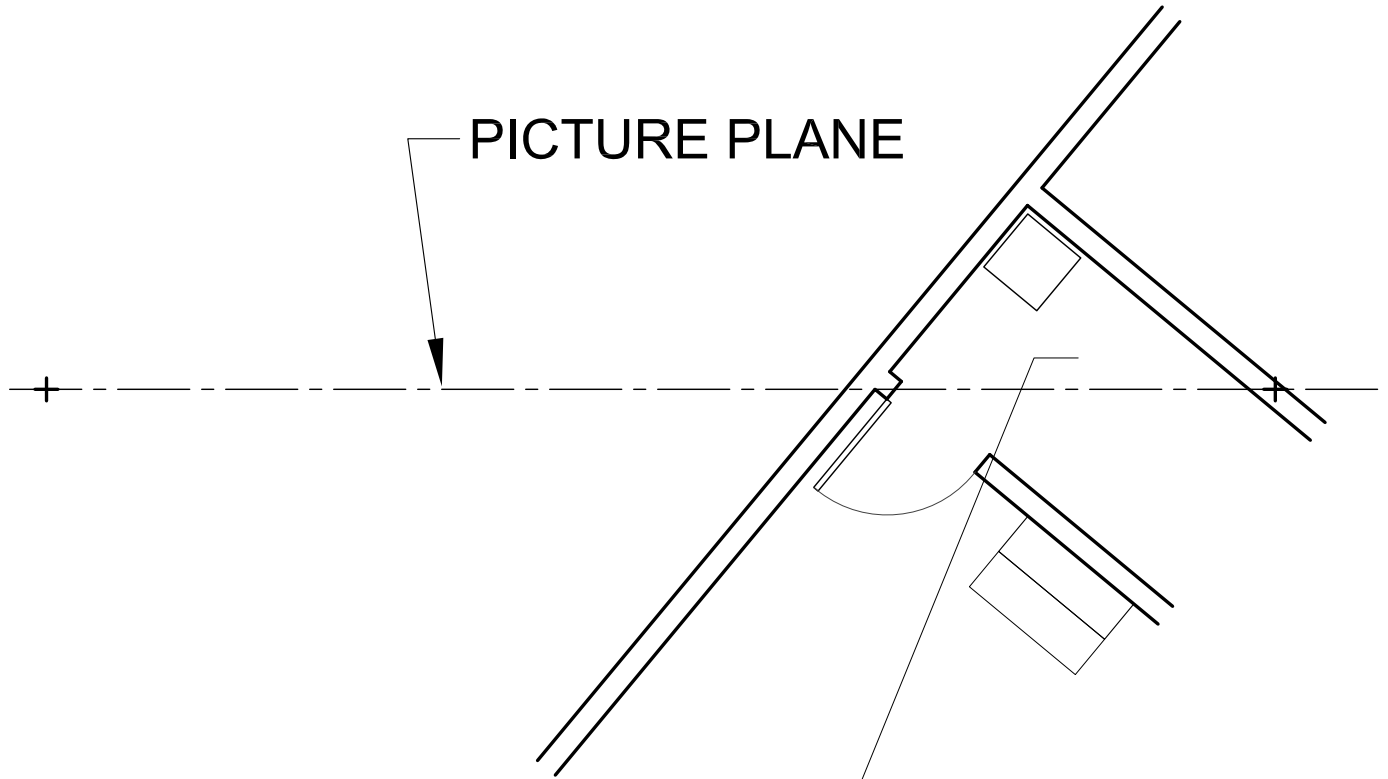
ELEMENTS THAT FALL OUTSIDE OF THE VANISHING POINTS ARE OUTSIDE OF THE CONE OF VISION AND CANNOT BE DRAWN.

S.P.

VPR



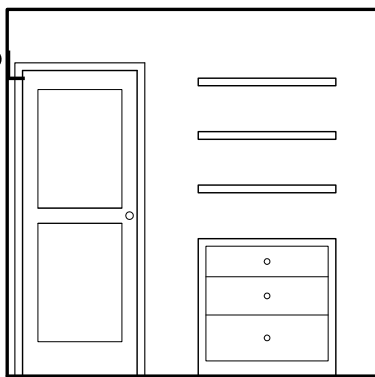
PICTURE PLANE



USE PERSPECTIVE TO
ADD DETAIL TO THE
ELEMENTS IN THE
DRAWING.

S.P.

VP
+



VPR
+

