

WEEK 2 IN-CLASS SKETCH PROBLEM: LINE WEIGHTS, DRAFTING PRACTICE

Divide one sheet of Canson drawing paper (from your kit) in half to end up with two pieces, approximately 13"x20" in size.

Tape one half of a sheet of drawing paper to your drafting board, keeping its edges parallel to the mayline.

On this sheet, develop a range of line weights. This will be your "lineweight guide" for the next assignment.

CONSTRUCTION LINES

- the lightest line weight
- may extend from edge to edge of the paper
- should not be erased

LAYOUT

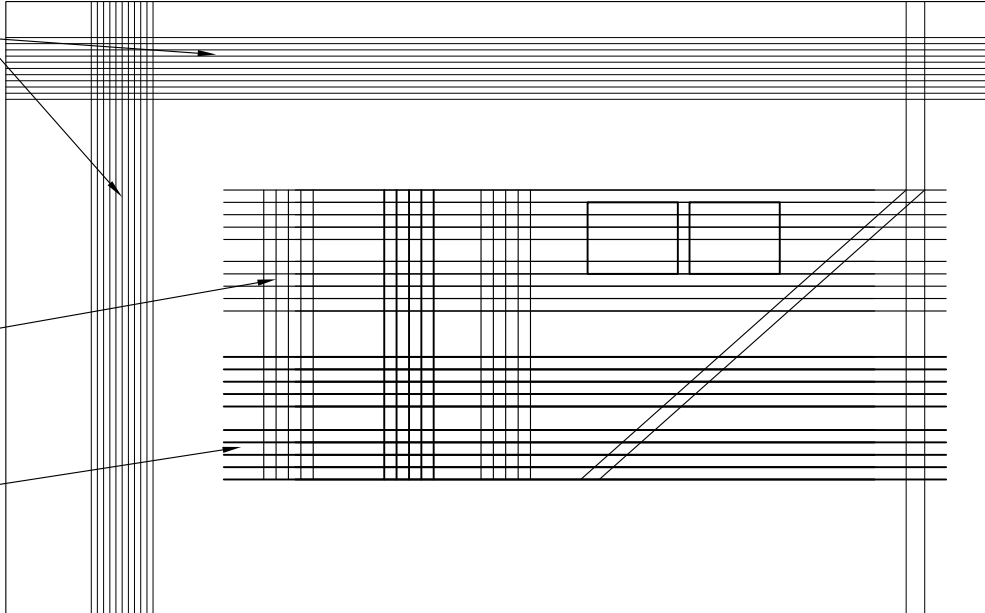
- GRID
- TEXTURES
- BACKGROUND OBJECTS

SECONDARY LINES

- middle line weight
- ELEVATIONS
- INTERSECTING PLANES

PRIMARY LINES

- darkest line weight
- SECTION CUTS
- OBJECT PROFILES
- FOREGROUND OBJECTS



- Practice 'rolling' your leadholder as you draft each line to maintain the consistency and crispness of the line across the page.
- Sharpen your lead frequently.
- Try using other tools from your kit on this sheet of paper such as the triangles, french curves and eraser shield.
- Single-stroke lines are preferable. Compare the hardness of different lead types (HB, H, 2H) for consistency and clarity.

Practice drafting straight lines using your mayline and triangles on your sheet of paper to develop a range of 3 line weights.

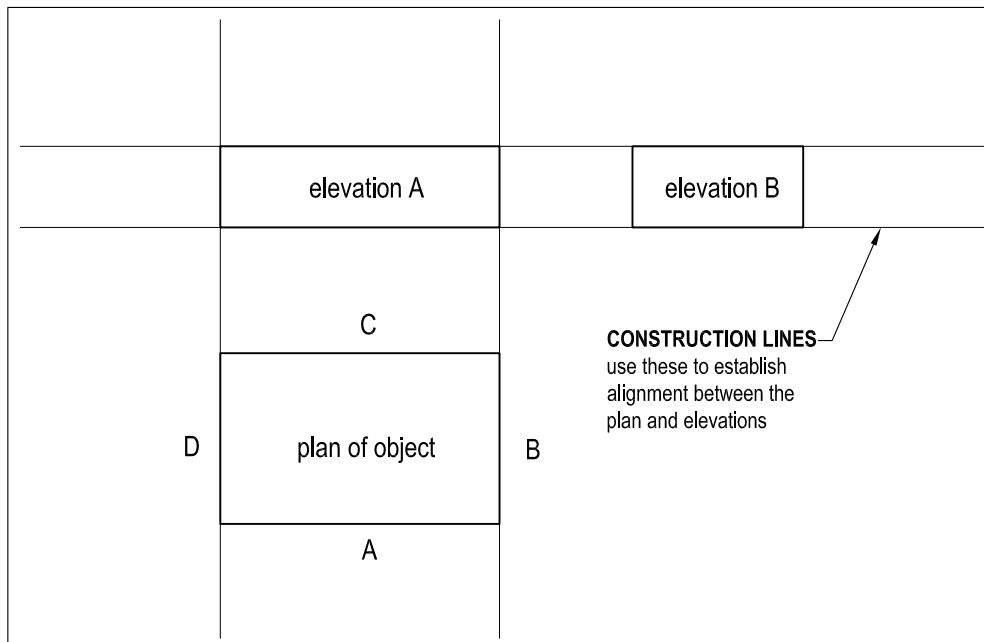
Use your triangles (including the adjustable triangle) to add angled lines to the page.

Practice drawing lines between known points to develop hand-eye accuracy. Try drawing measured shapes using your architectural scale.

ASSIGNMENT 2: ORTHOGRAPHIC PROJECTION

Draft a plan and two elevations of your tool using the principles of orthographic projection discussed in class.

Use construction lines to ensure alignment between the three drawings - extend these lines from edge to edge of the page.



Refer to Chapter 5, Pictorial Systems, in Design Drawing for additional information.

This assignment is due:
01-25-10

Position the composition with the plan of your object in the lower left hand corner of the page. Arrange the elevations as indicated above, leaving adequate space around each drawing for legibility. Do not add text or a border to the page.

Be consistent with your lineweights between drawings. All drawings should be at 1:1 scale.