

File Edit Image Layer Select Filter Analysis 3D View Window Help

Feather: 0 px

Style: Normal

Refine Edge...

Open a PDF in Photoshop

Import PDF

Select:

☒ Pages ☐ Images

1

1 of 1 page(s) selected

Thumbnail Size: Small

Page Options

Name: Studio

Crop To: Bounding Box

☒ Anti-aliased

Image Size: 206.8M

Width: 35.543 inches

Height: 22.598 inches

☒ Constrain Proportions

Resolution: 300 pixels/inch

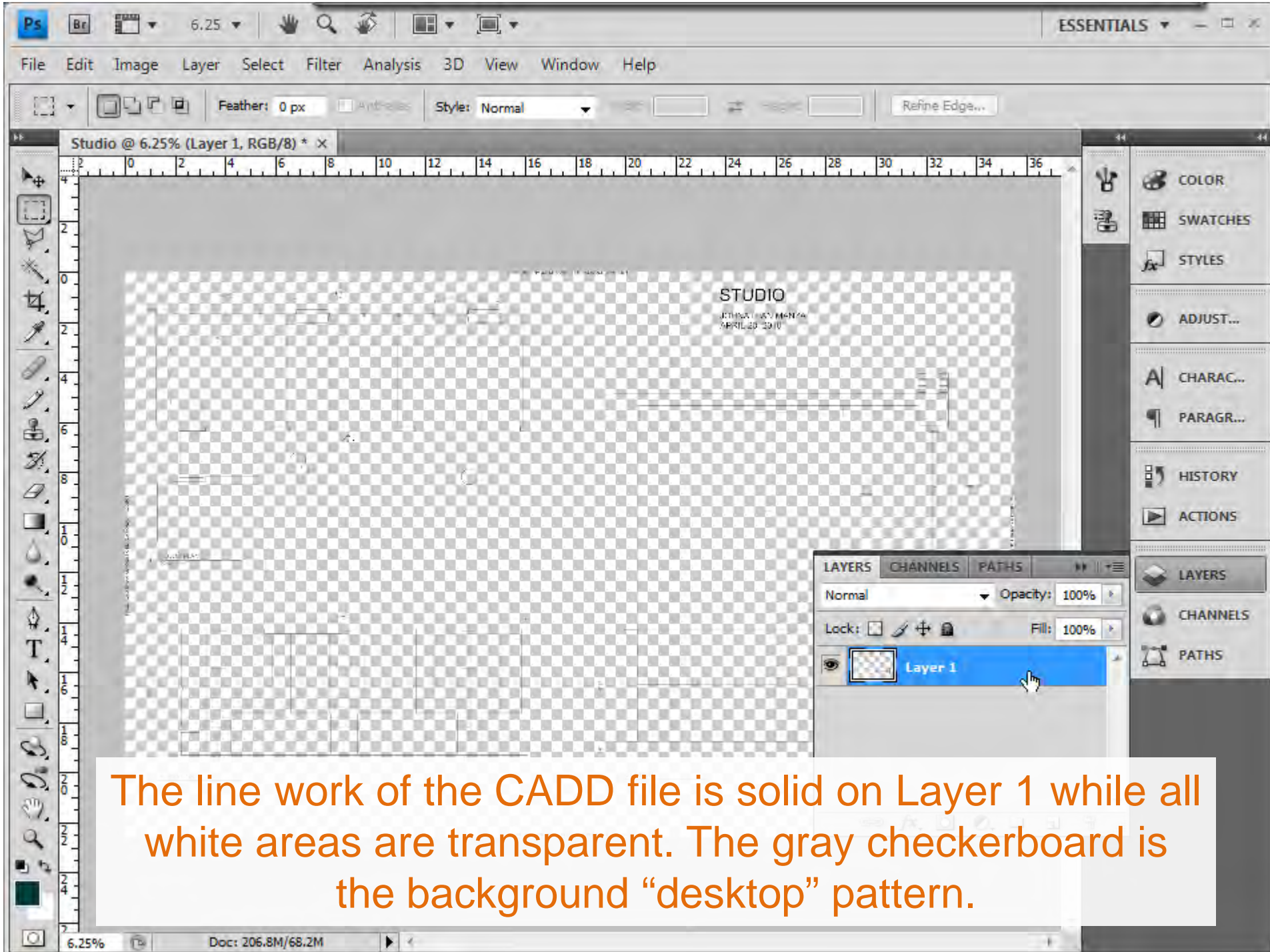
Mode: RGB Color

Bit Depth: 8 bit

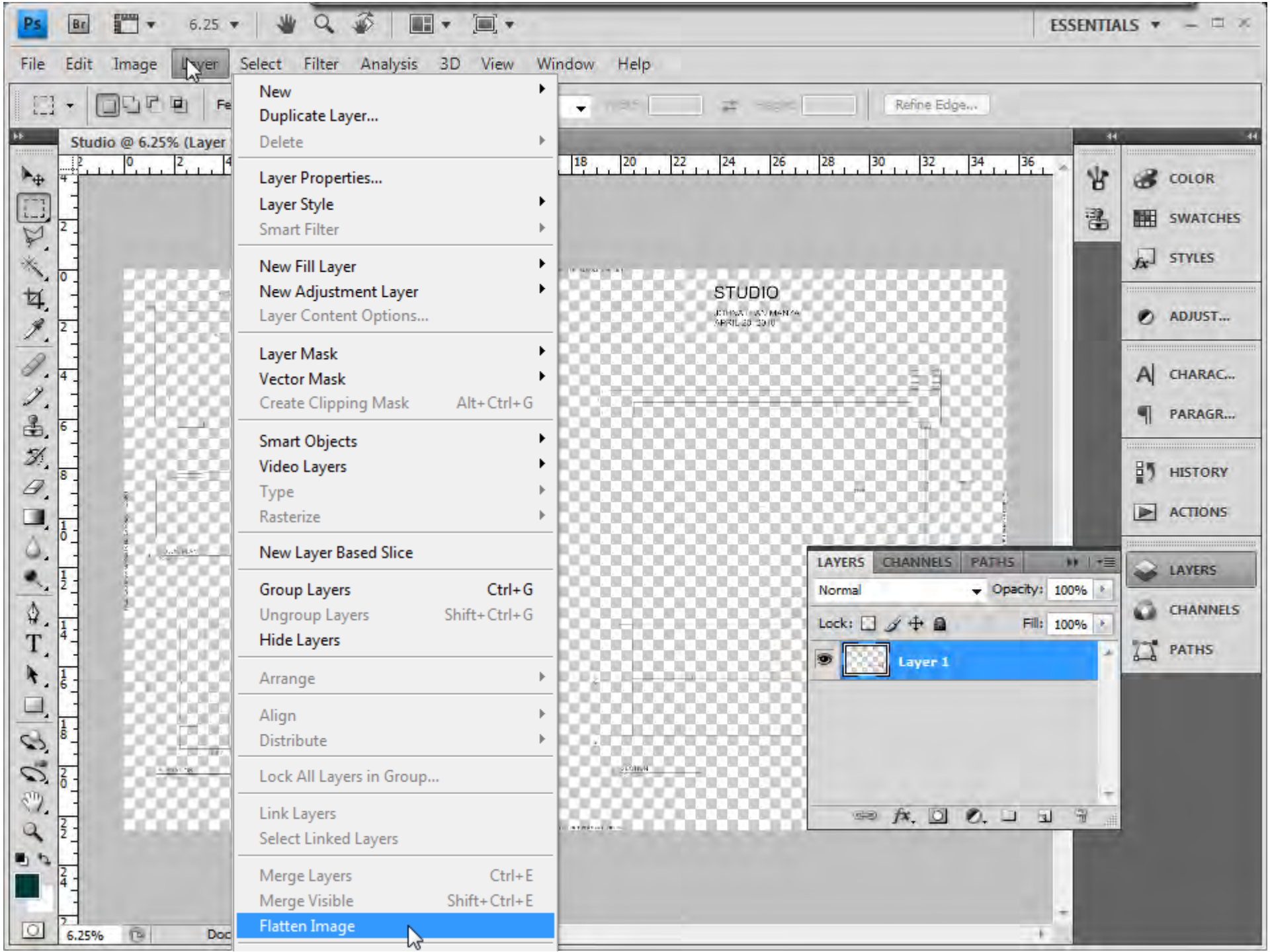
☐ Suppress Warnings

OK

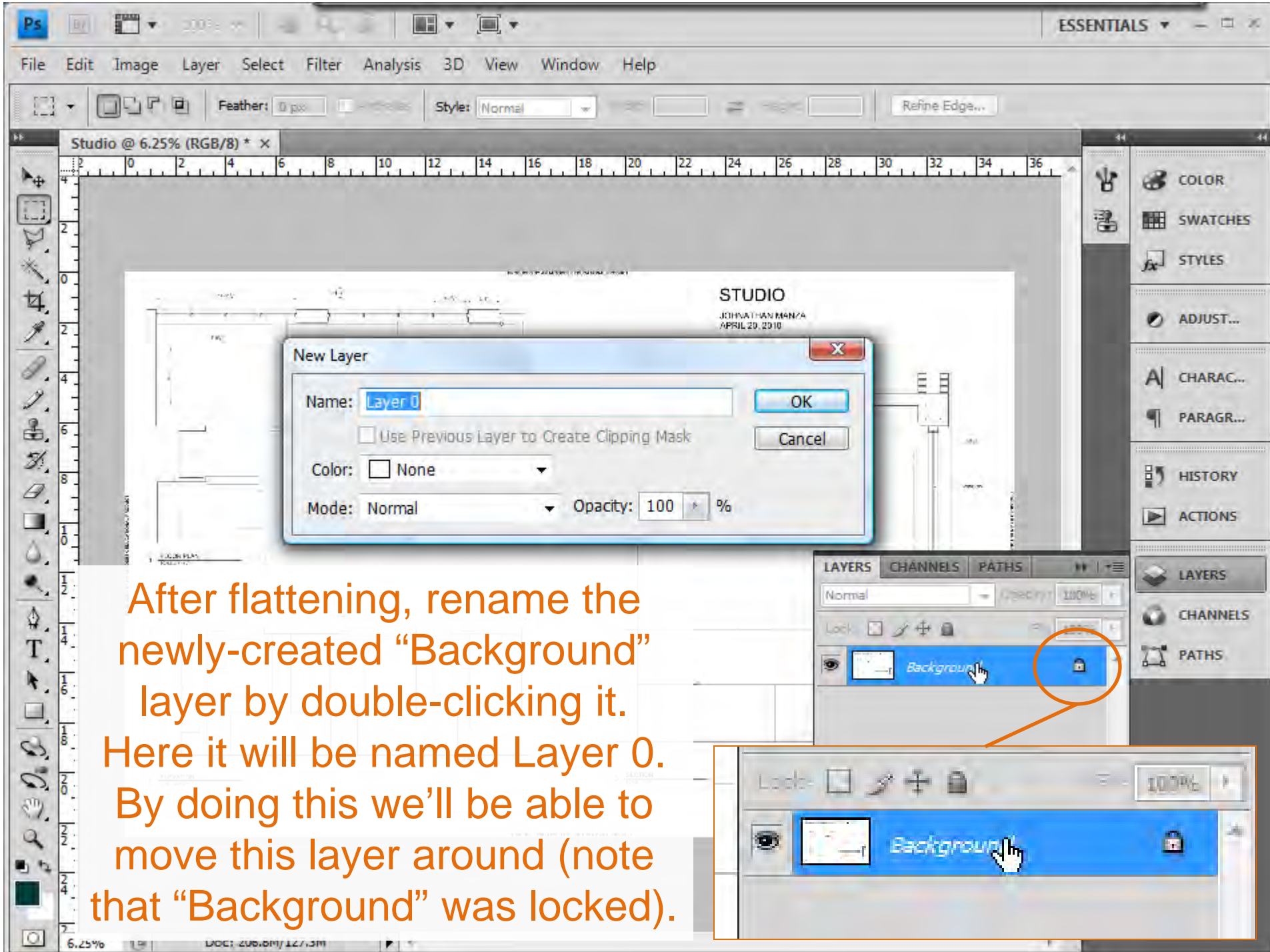
Cancel



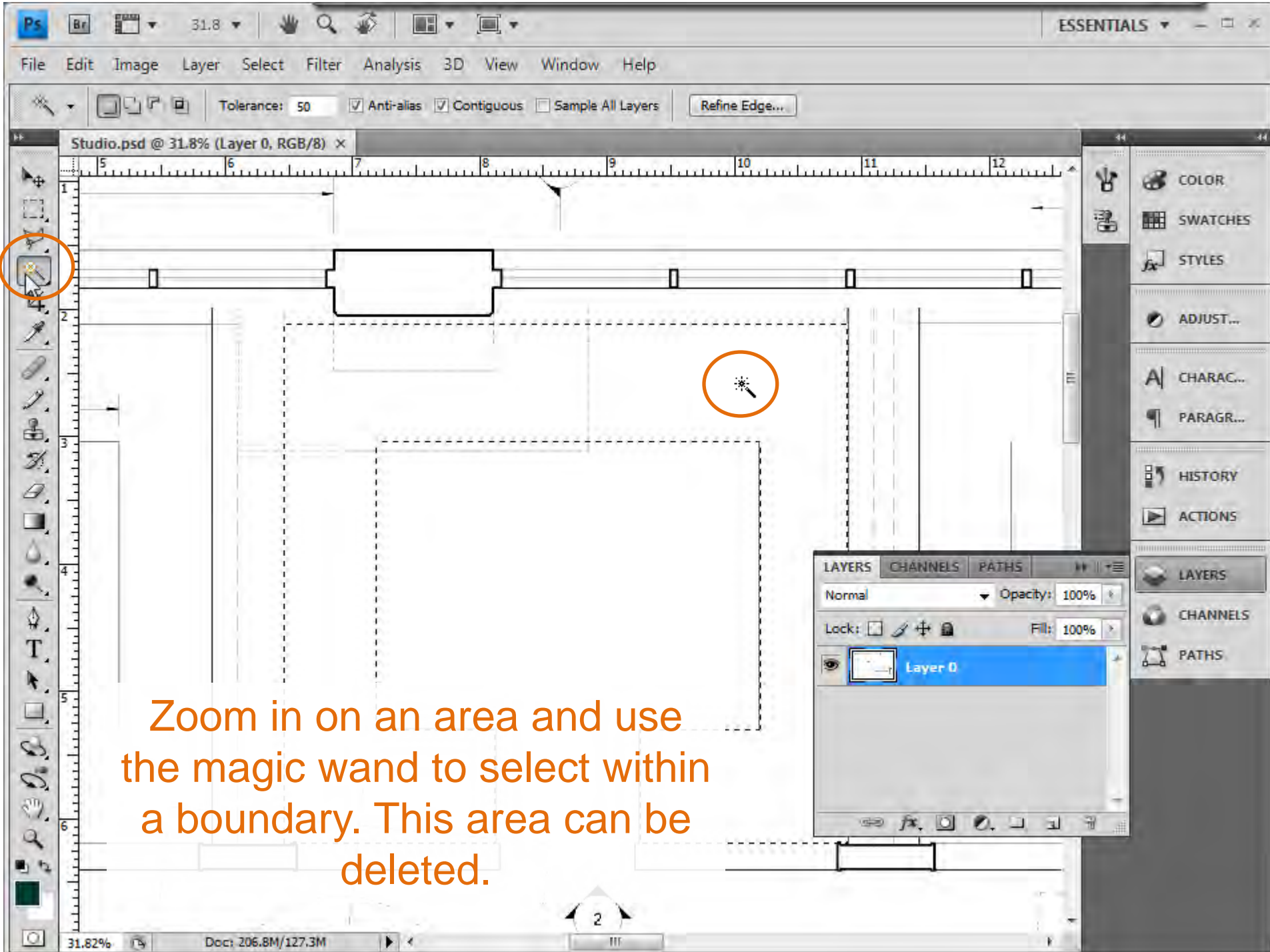
The line work of the CADD file is solid on Layer 1 while all white areas are transparent. The gray checkerboard is the background “desktop” pattern.



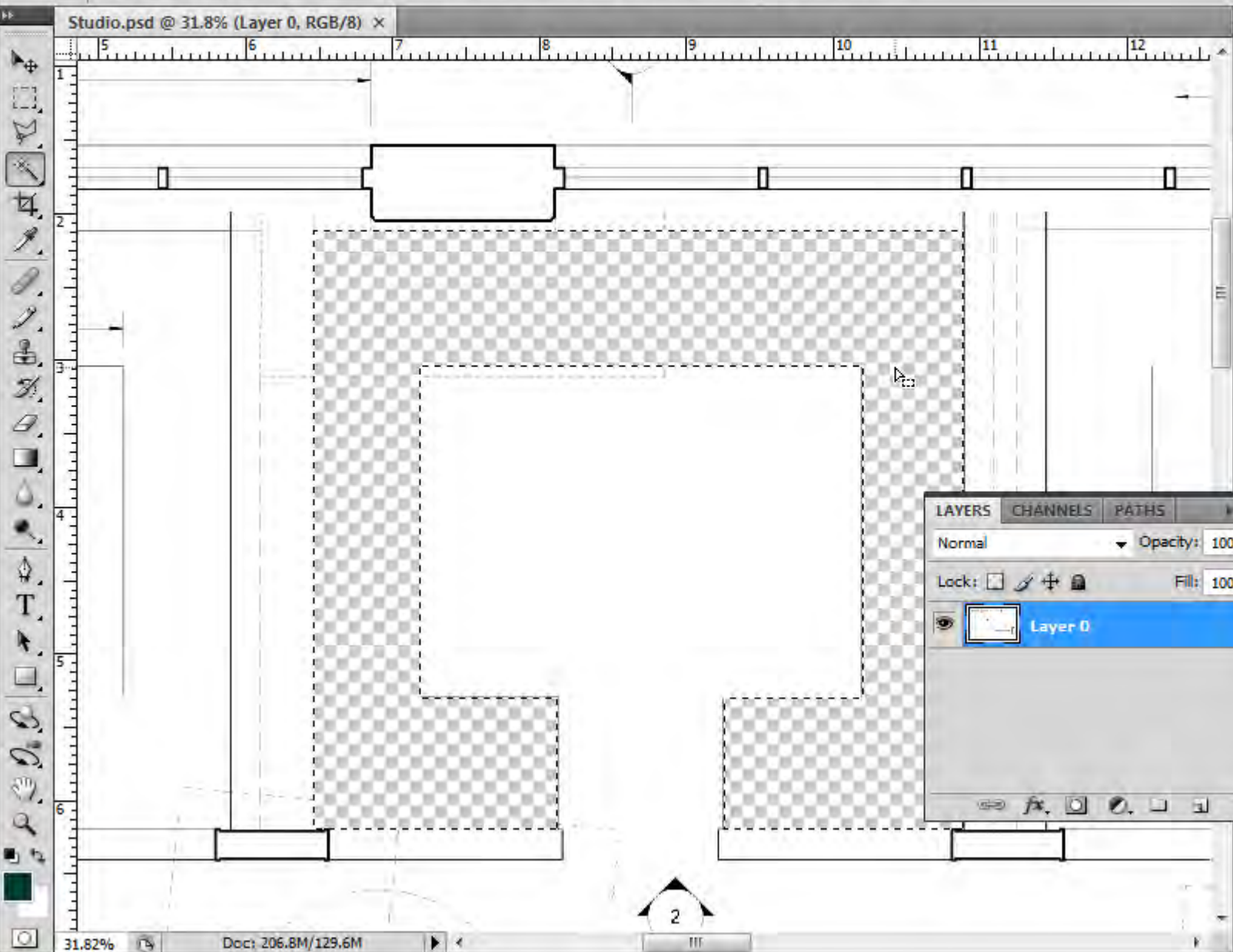
- New
 - Duplicate Layer...
 - Delete
- Layer Properties...
- Layer Style
- Smart Filter
- New Fill Layer
- New Adjustment Layer
- Layer Content Options...
- Layer Mask
 - Vector Mask
 - Create Clipping Mask Alt+Ctrl+G
- Smart Objects
- Video Layers
- Type
- Rasterize
- New Layer Based Slice
- Group Layers Ctrl+G
- Ungroup Layers Shift+Ctrl+G
- Hide Layers
- Arrange
- Align
- Distribute
- Lock All Layers in Group...
- Link Layers
- Select Linked Layers
- Merge Layers Ctrl+E
- Merge Visible Shift+Ctrl+E
- Flatten Image



After flattening, rename the newly-created “Background” layer by double-clicking it. Here it will be named Layer 0. By doing this we’ll be able to move this layer around (note that “Background” was locked).



Zoom in on an area and use the magic wand to select within a boundary. This area can be deleted.



COLOR

SWATCHES

STYLES

ADJUST...

CHARAC...

PARAGR...

HISTORY

ACTIONS

LAYERS

CHANNELS

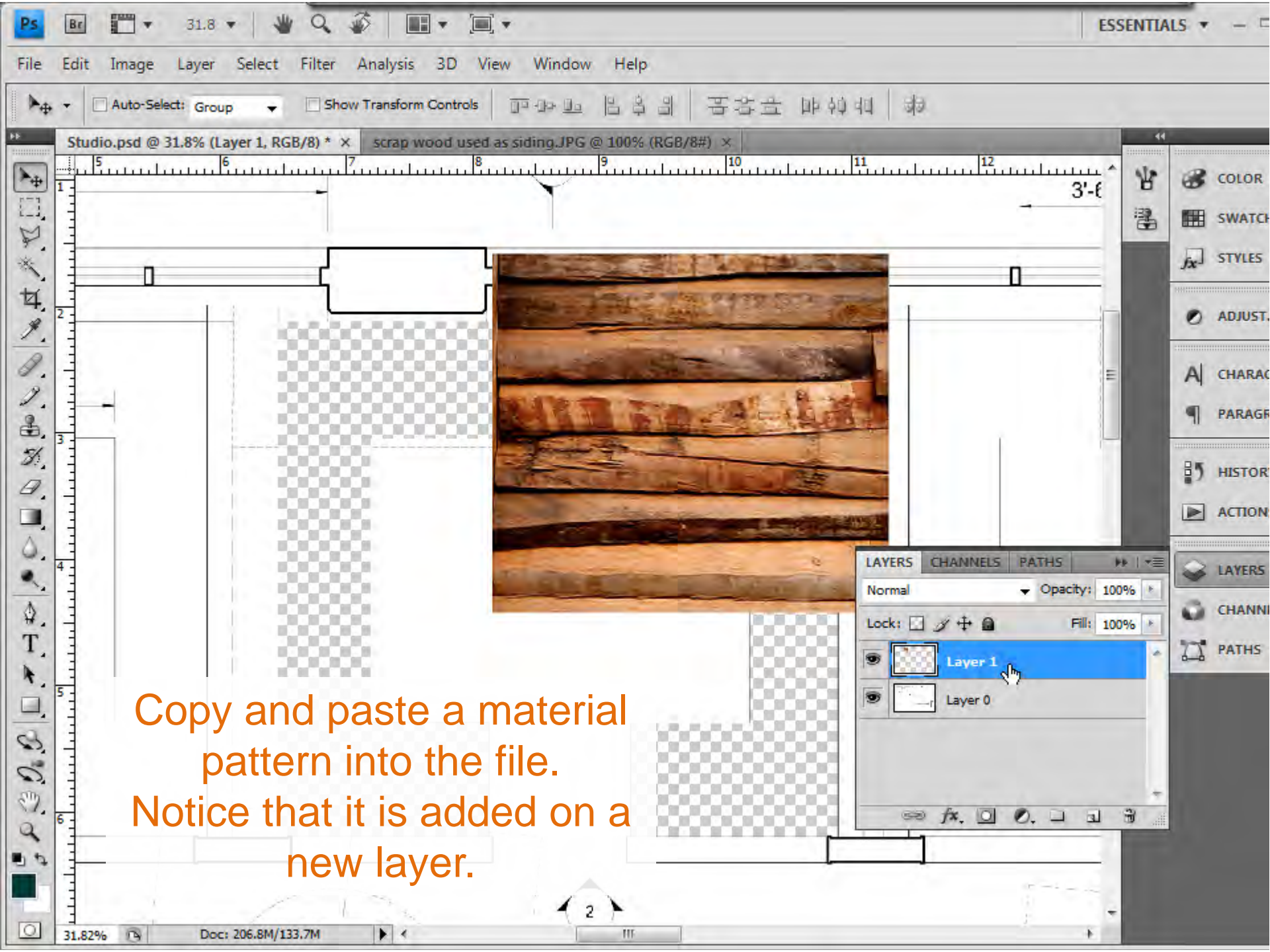
PATHS

LAYERSCHANNELSPATHS

Normal ▾ Opacity: 100%

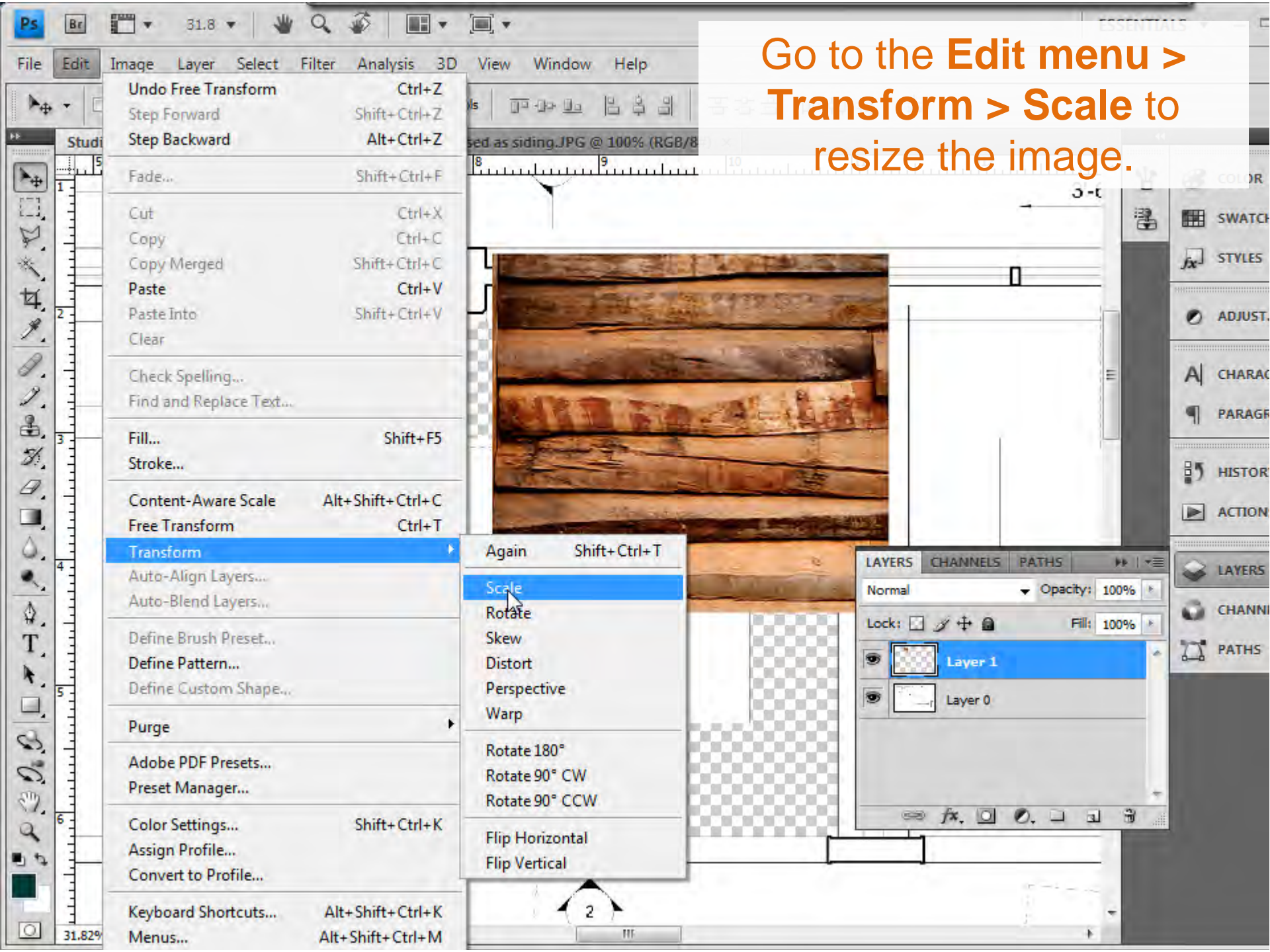
Lock: Fill: 100%

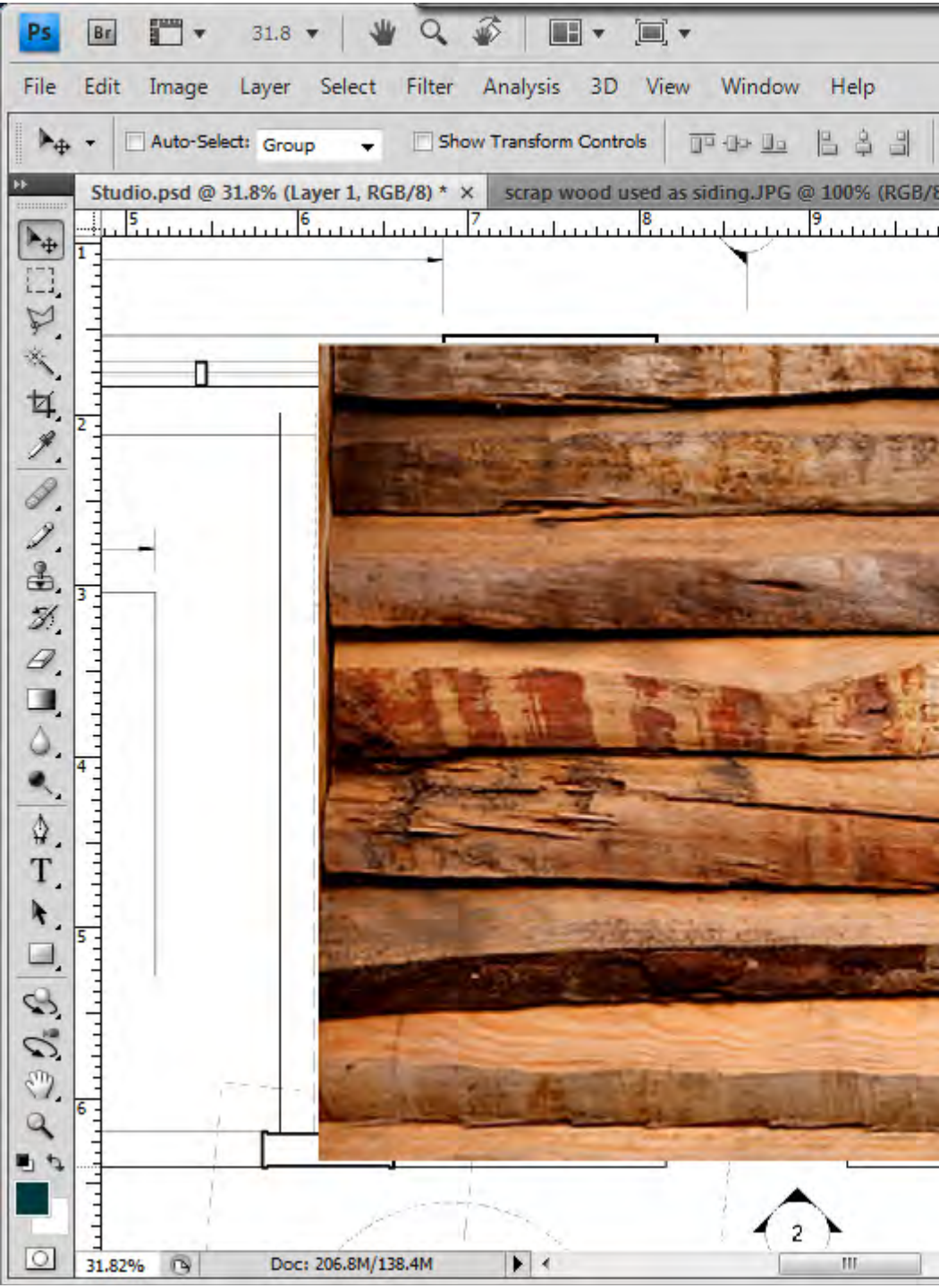
Layer 0



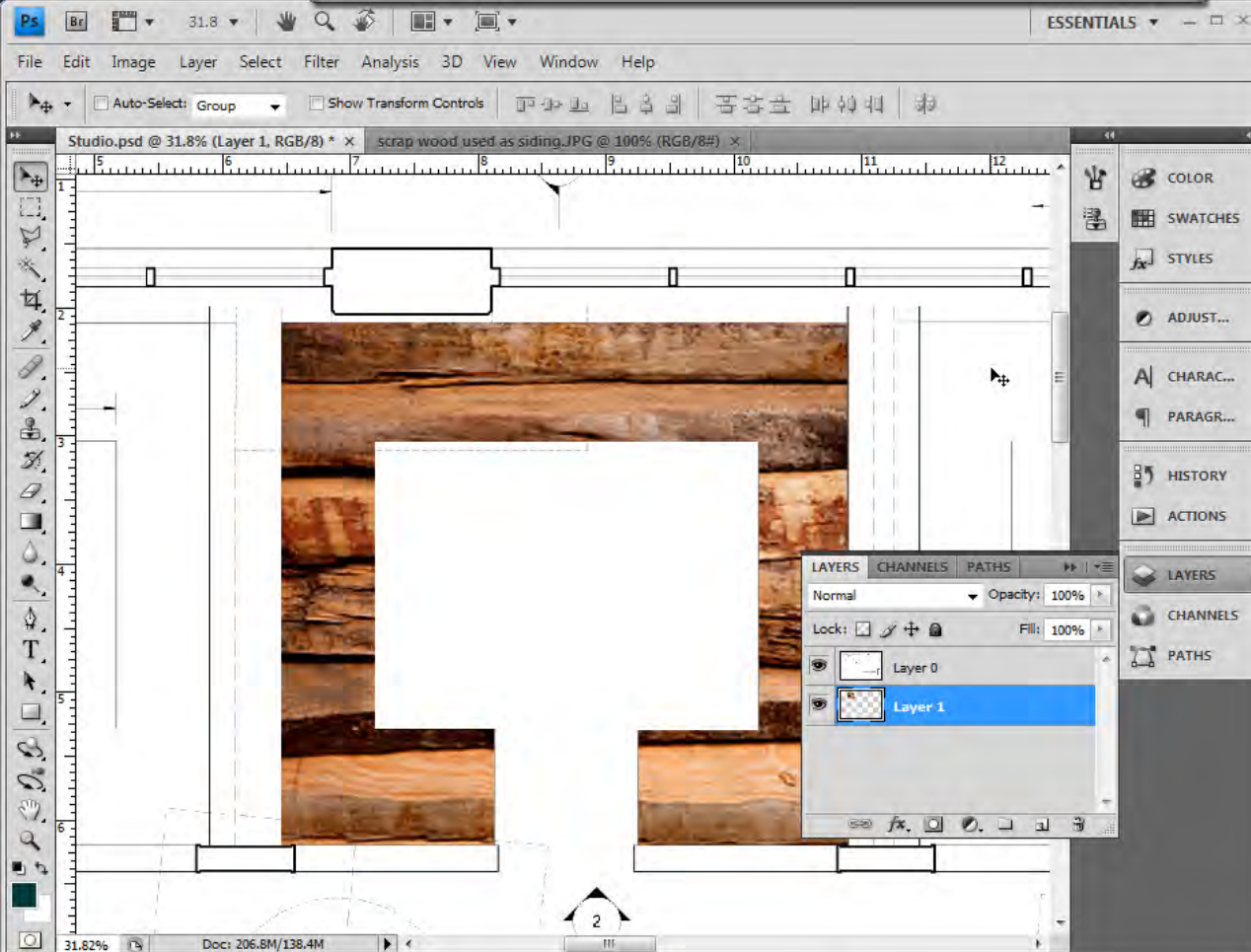
Copy and paste a material pattern into the file.
Notice that it is added on a new layer.

Go to the **Edit menu > Transform > Scale** to resize the image.

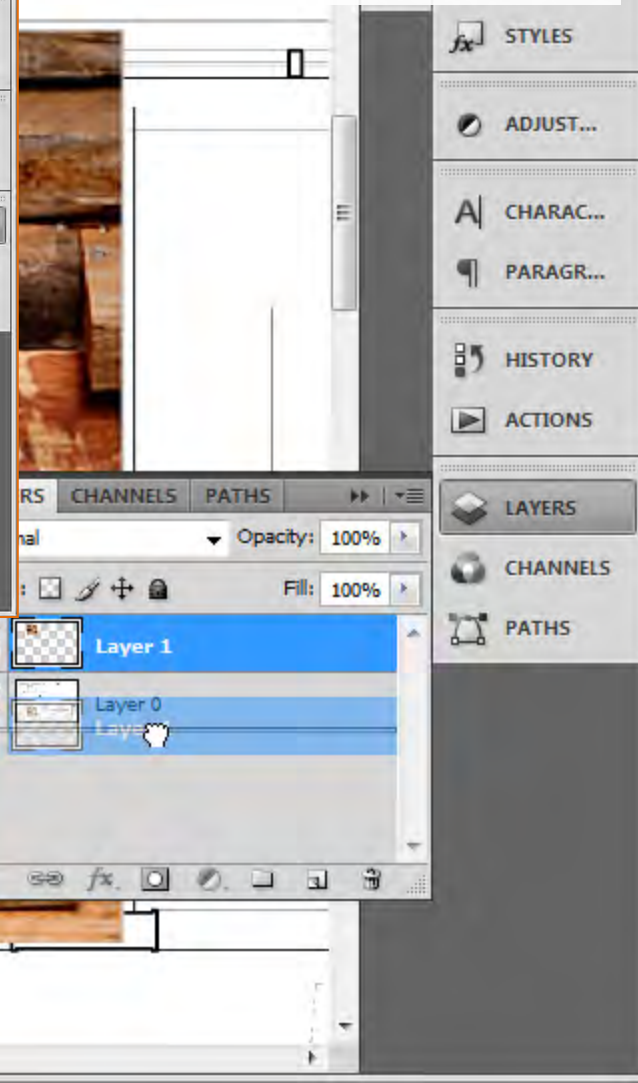




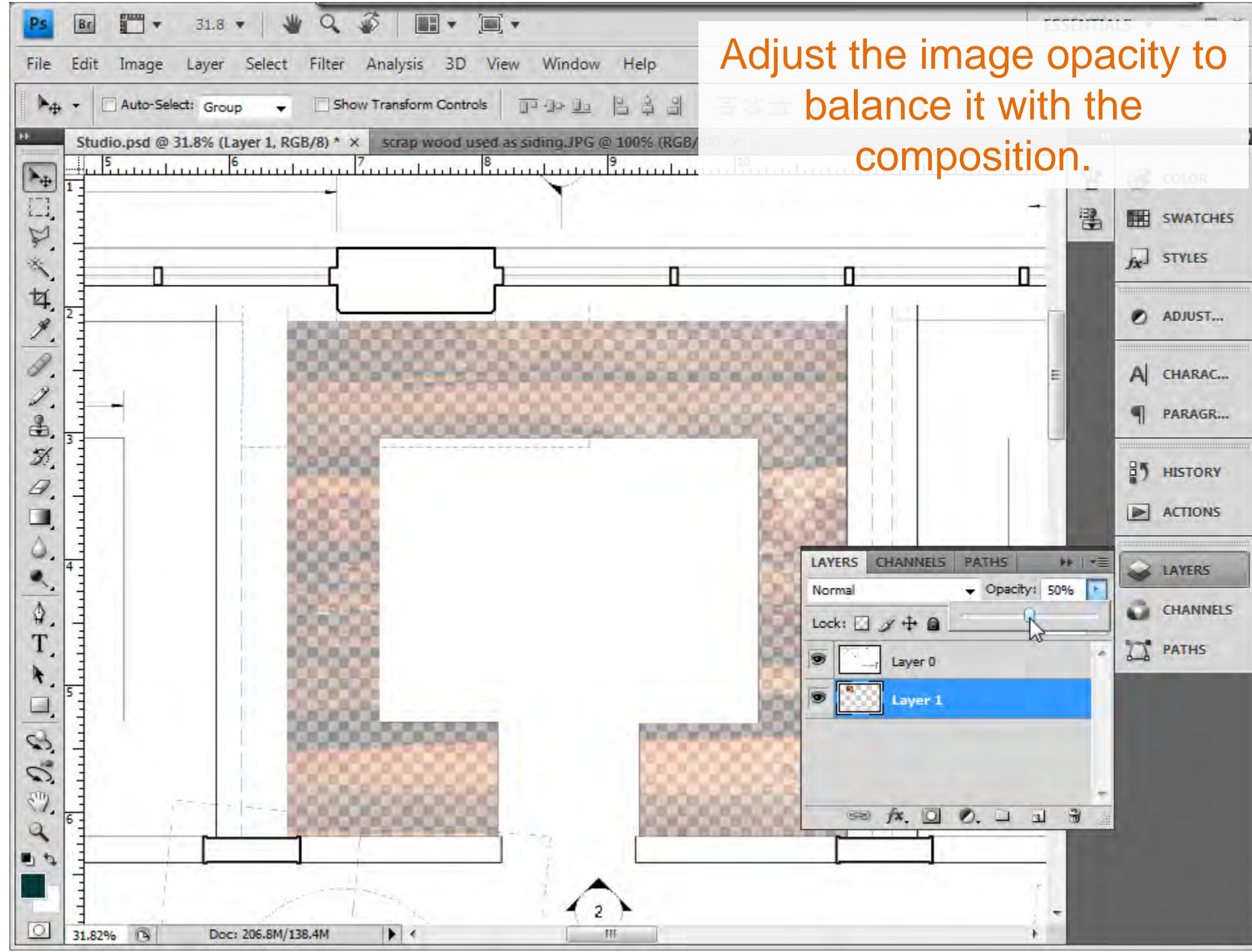
Hold down the shift key while resizing to constrain the image proportions.

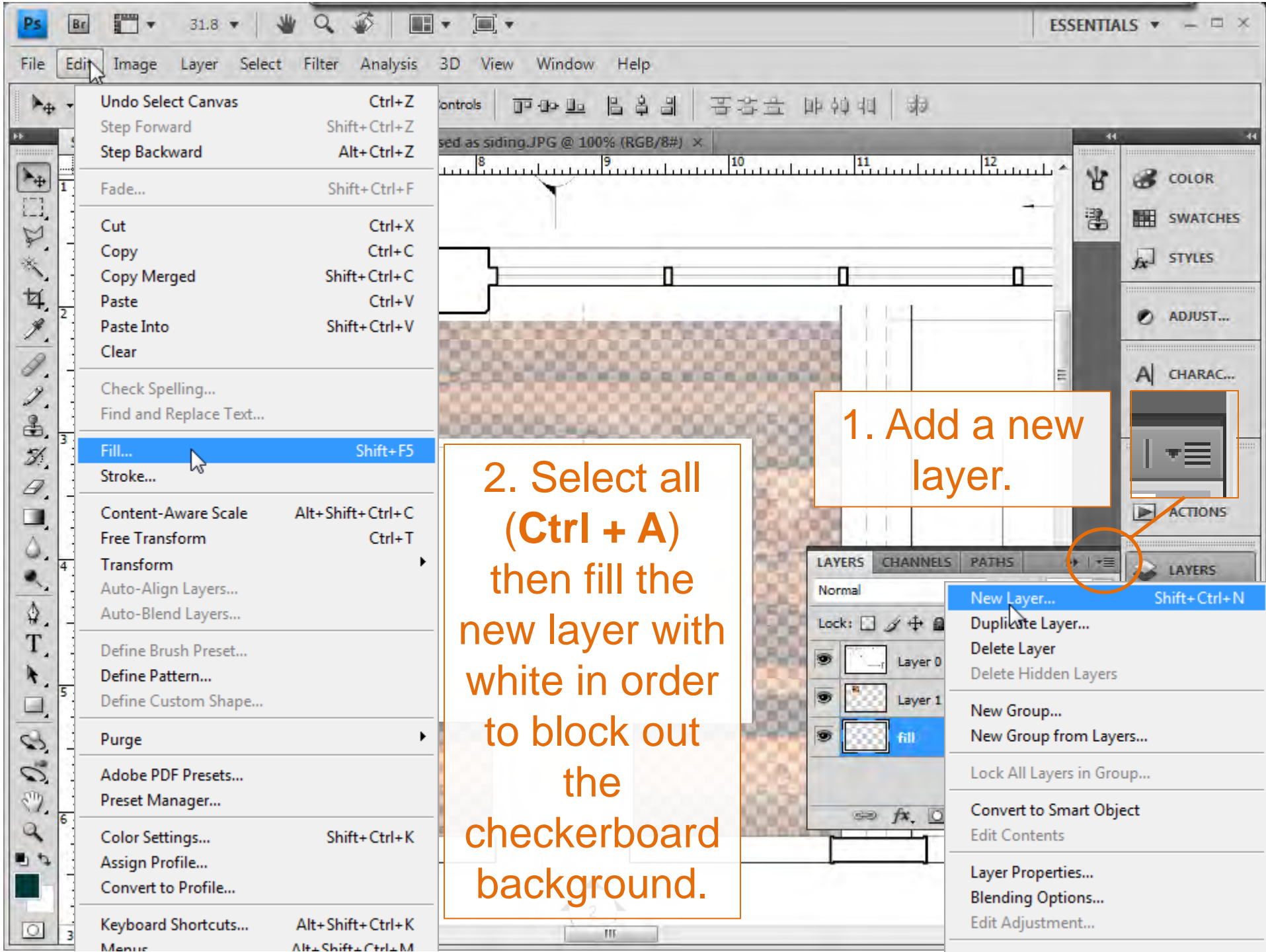


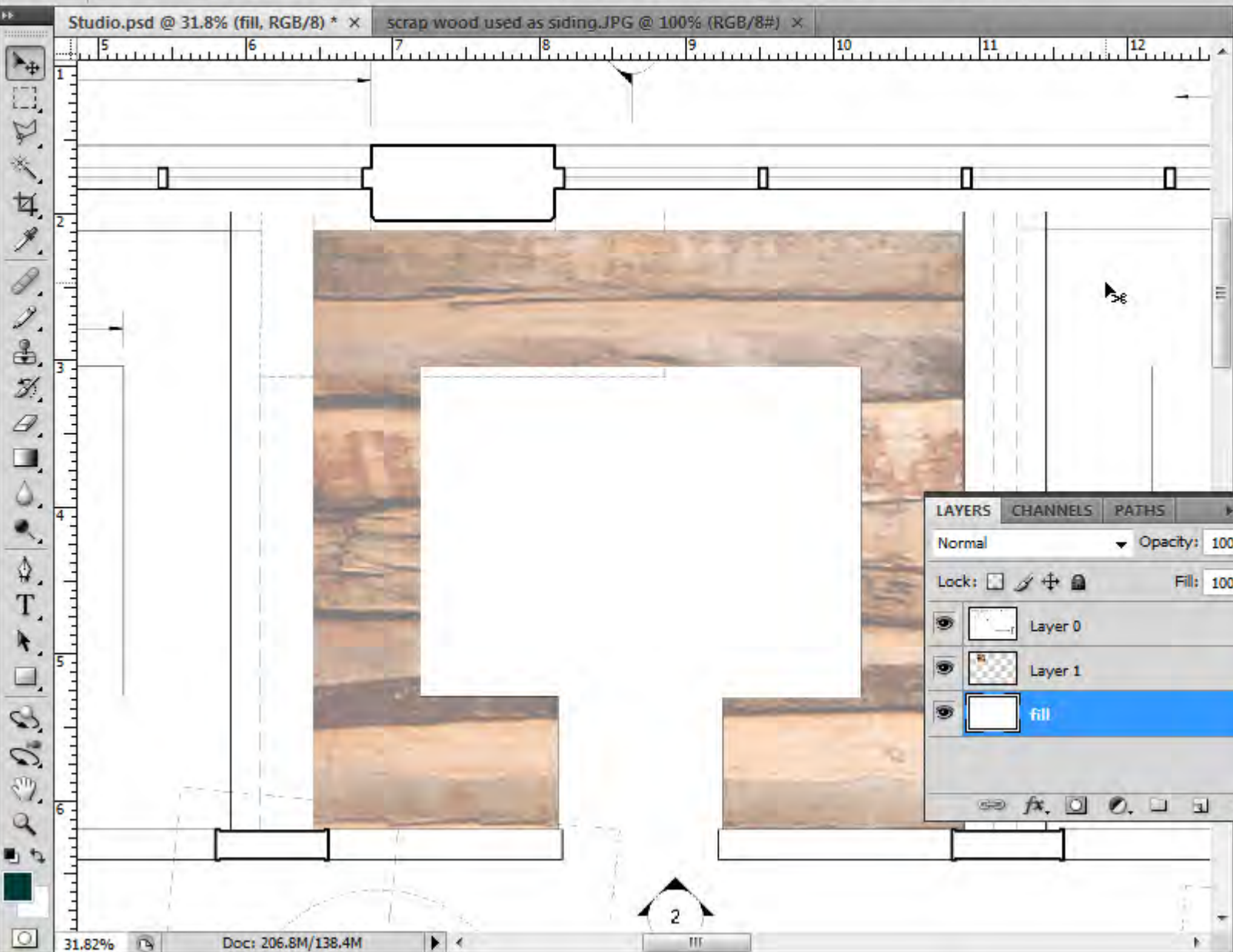
Adjust the order of the layers so the base drawing acts as a mask.



Adjust the image opacity to
balance it with the
composition.







COLOR
 SWATCHES
 STYLES

ADJUST...

CHARAC...
 PARAGR...

HISTORY
 ACTIONS

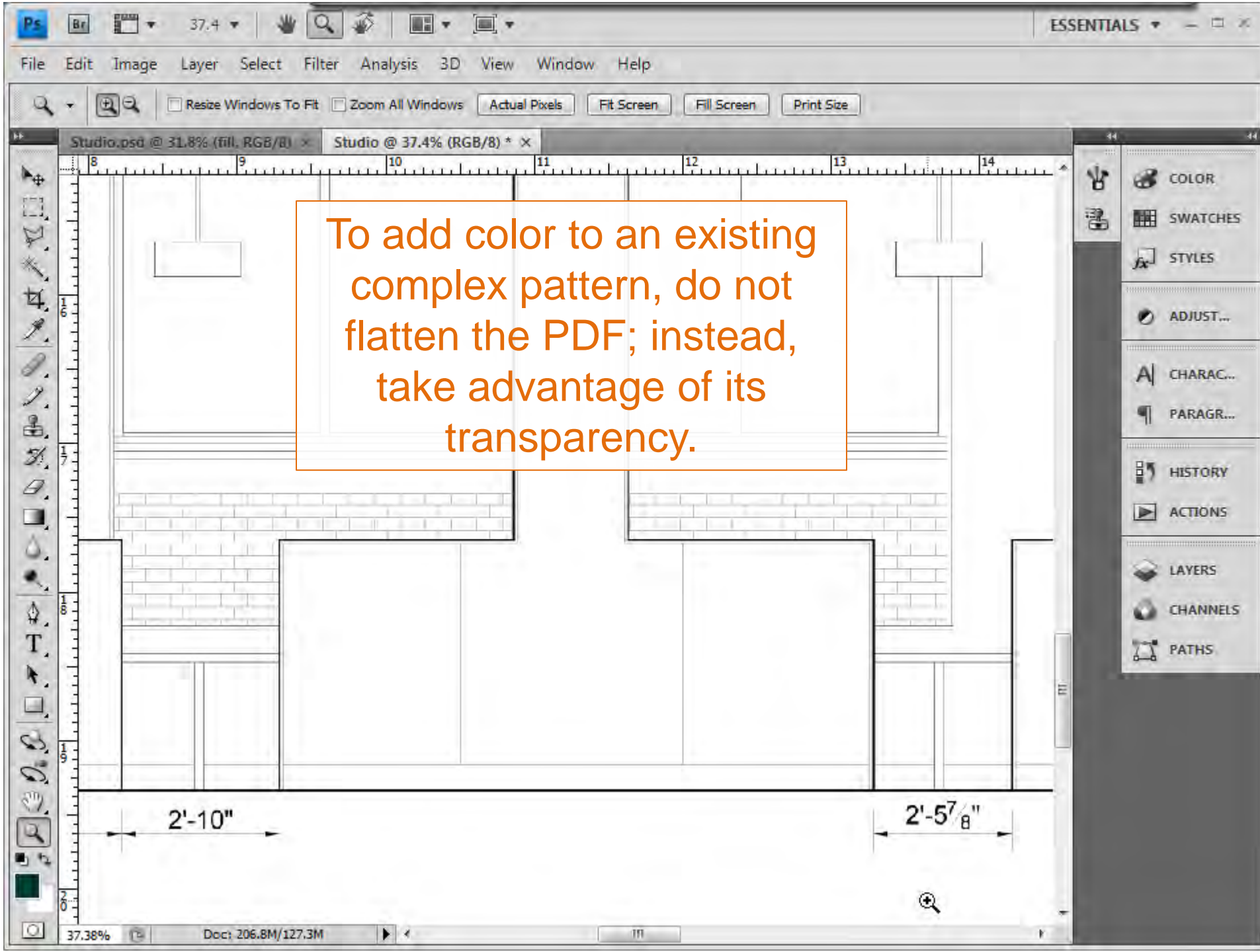
LAYERS
 CHANNELS
 PATHS

LAYERS CHANNELS PATHS

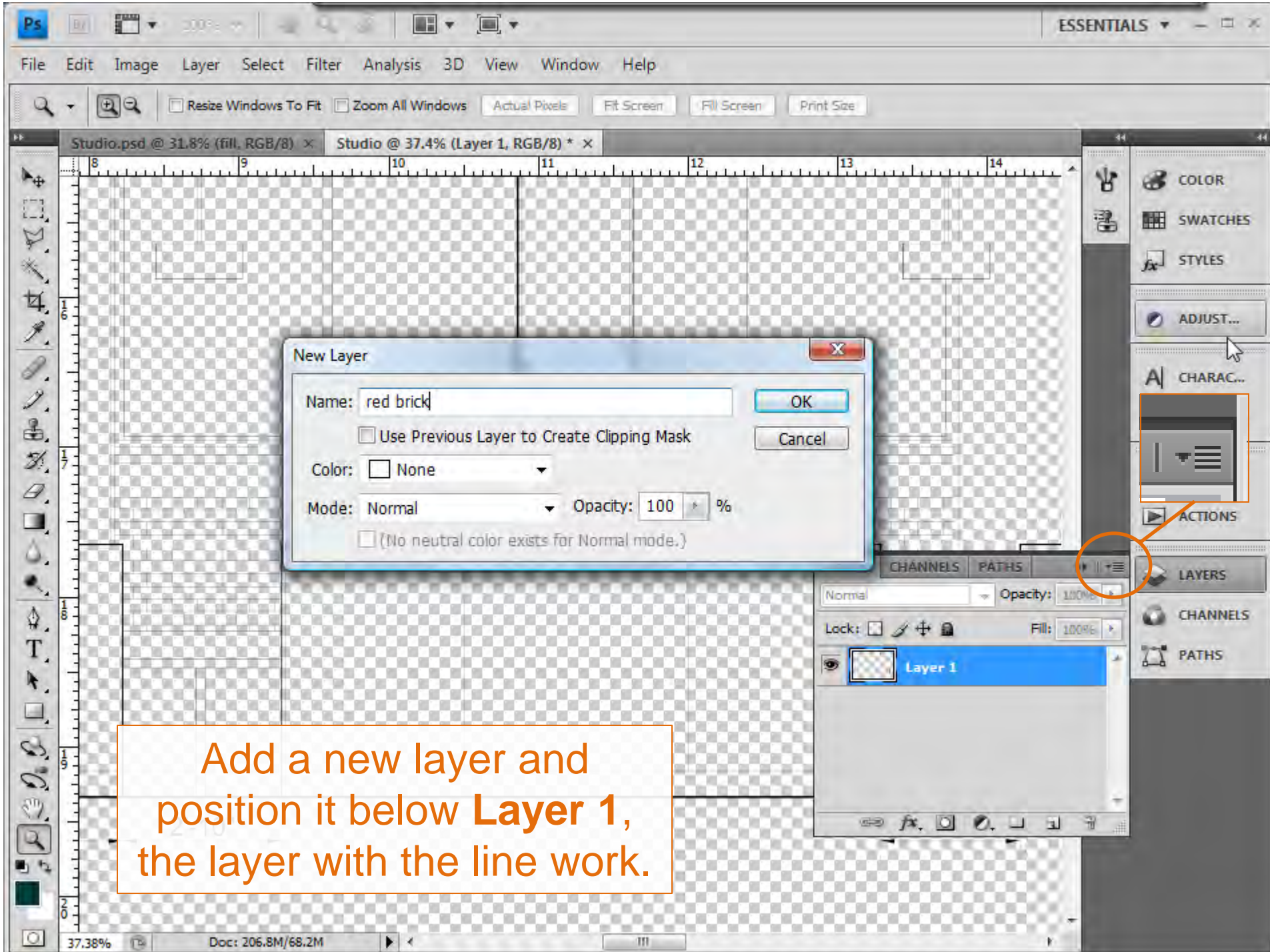
Normal ▾ Opacity: 100% ▾

Lock: Fill: 100% ▾

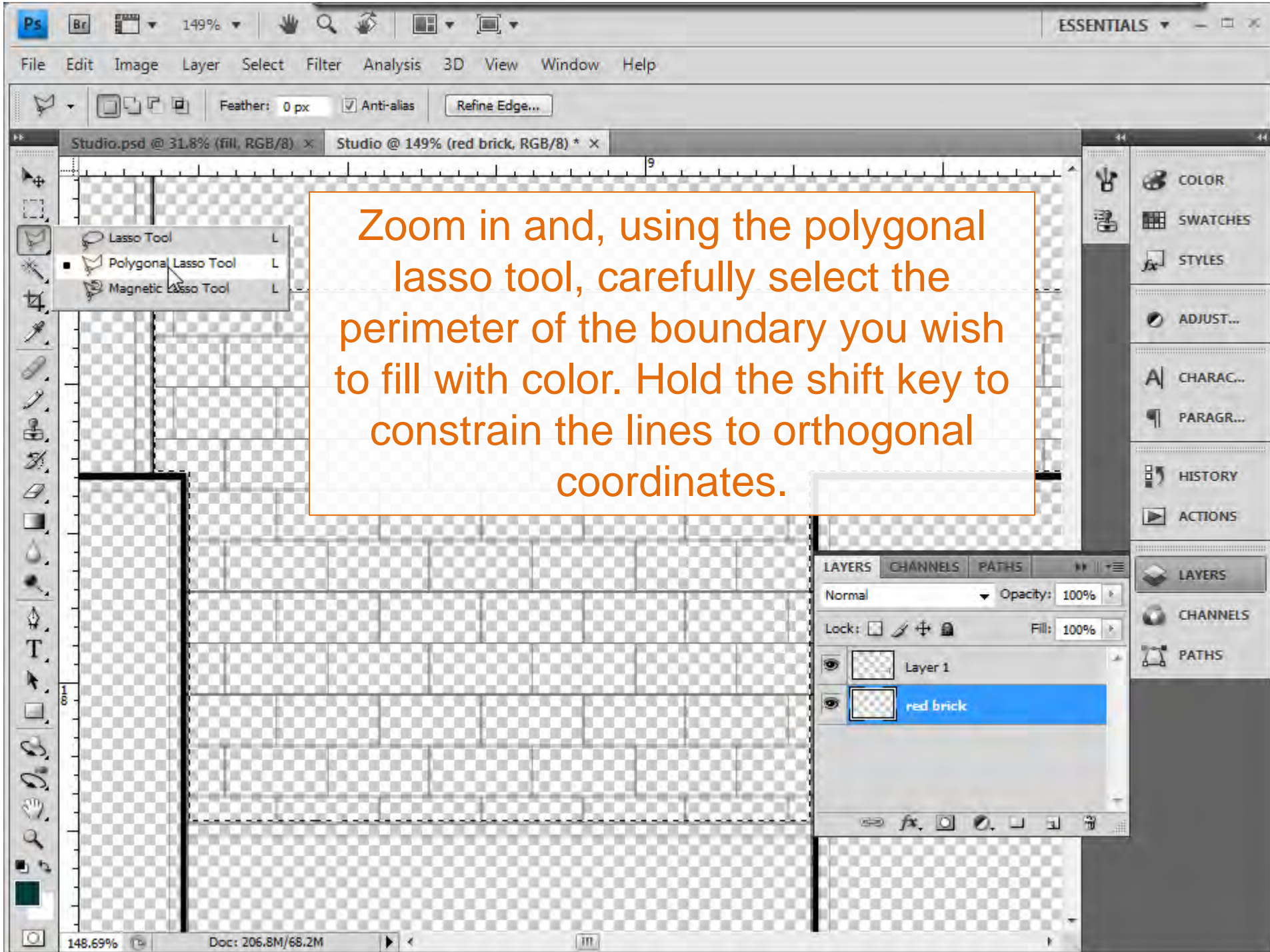
	Layer 0
	Layer 1
	fill



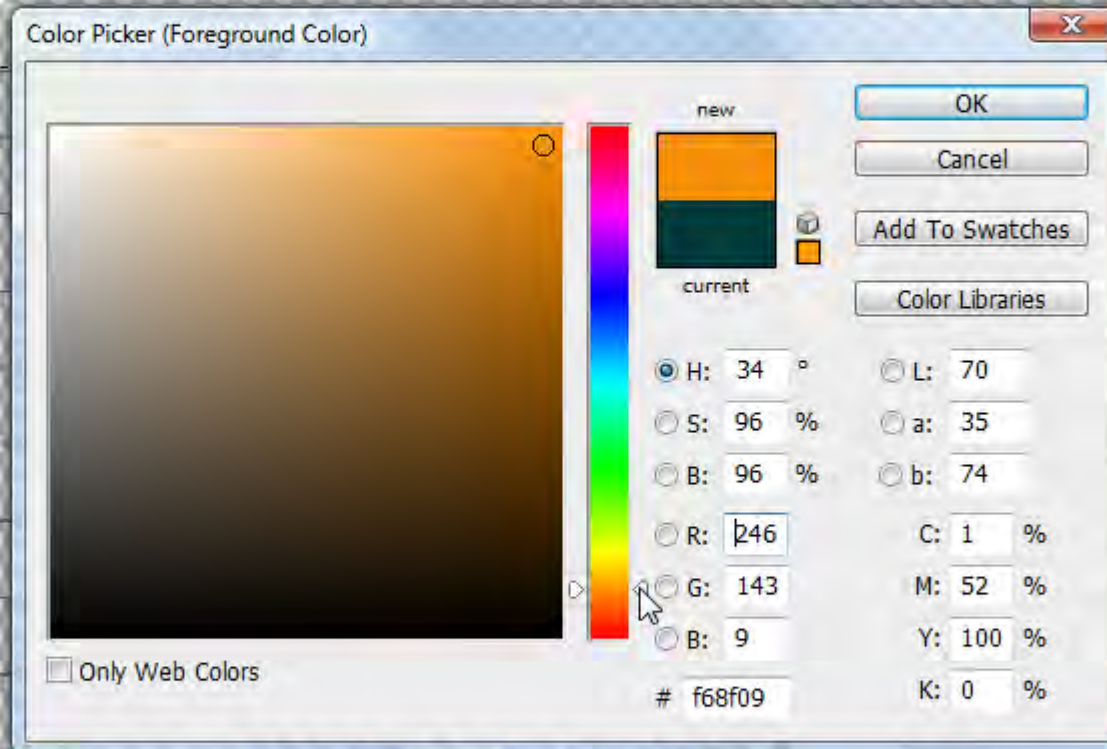
To add color to an existing complex pattern, do not flatten the PDF; instead, take advantage of its transparency.

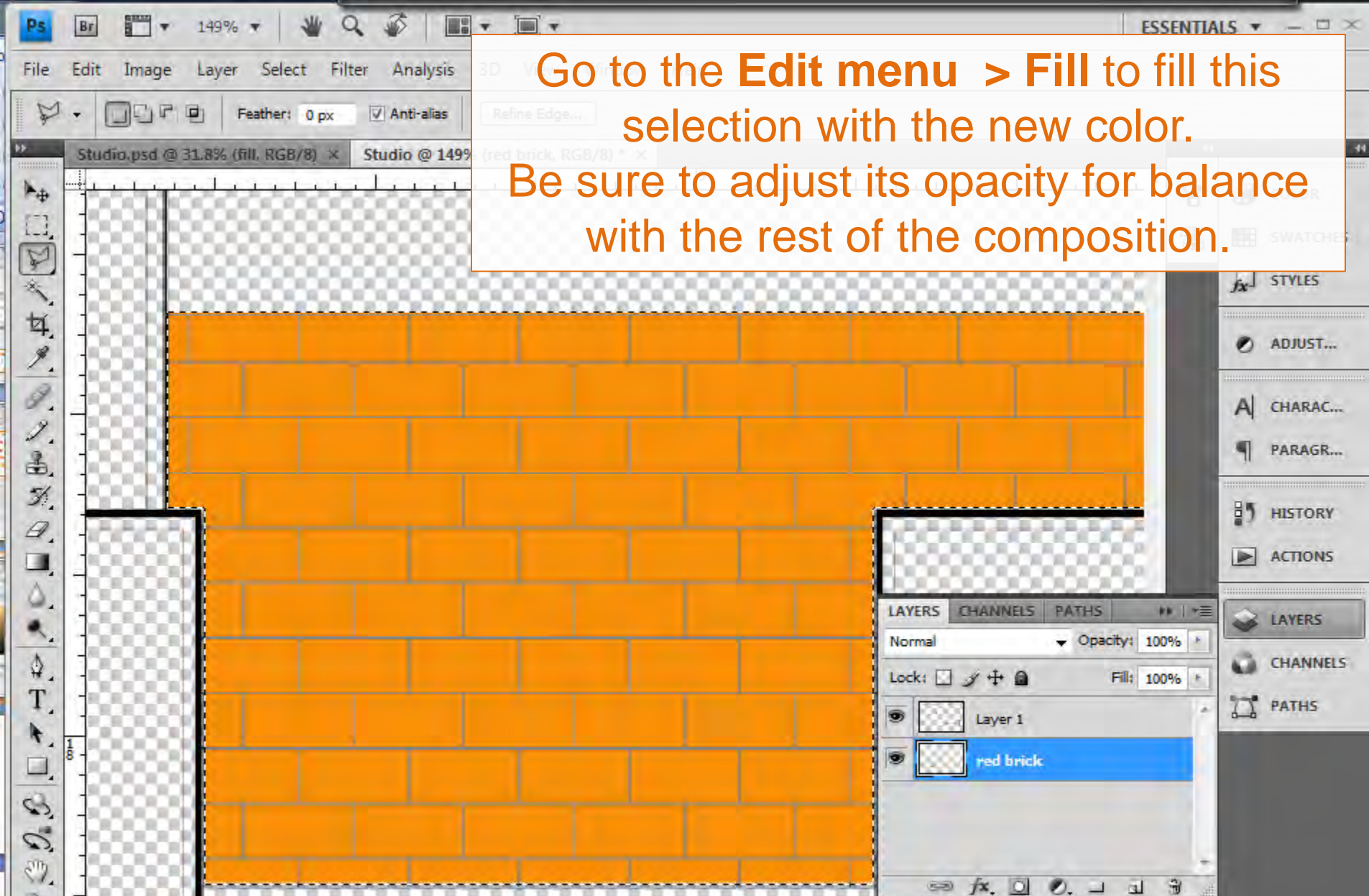


Add a new layer and position it below **Layer 1**, the layer with the line work.



Click the color selector in the lower left corner to choose a color to fill the selected area with.

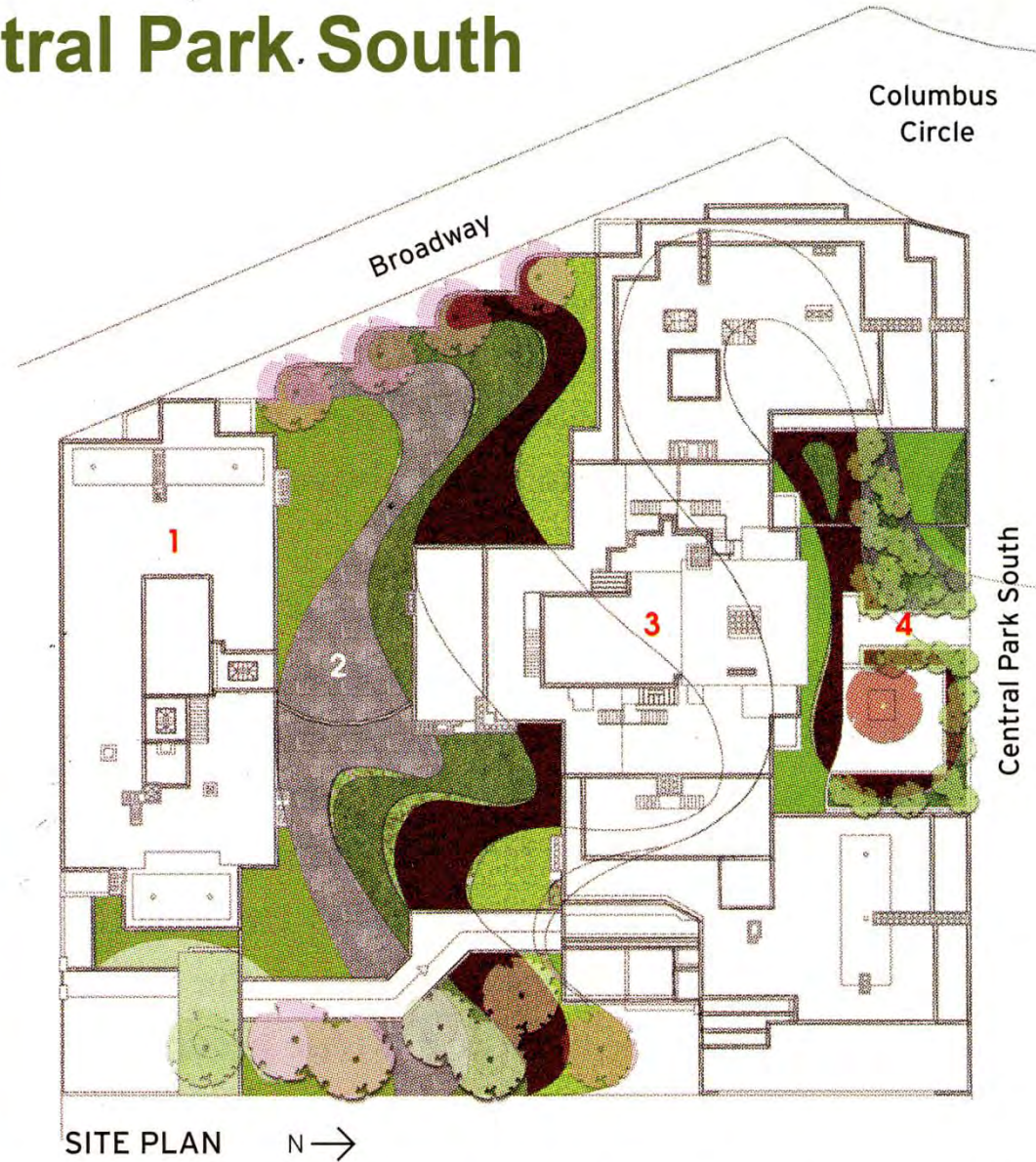




Go to the **Edit menu > Fill** to fill this selection with the new color. Be sure to adjust its opacity for balance with the rest of the composition.

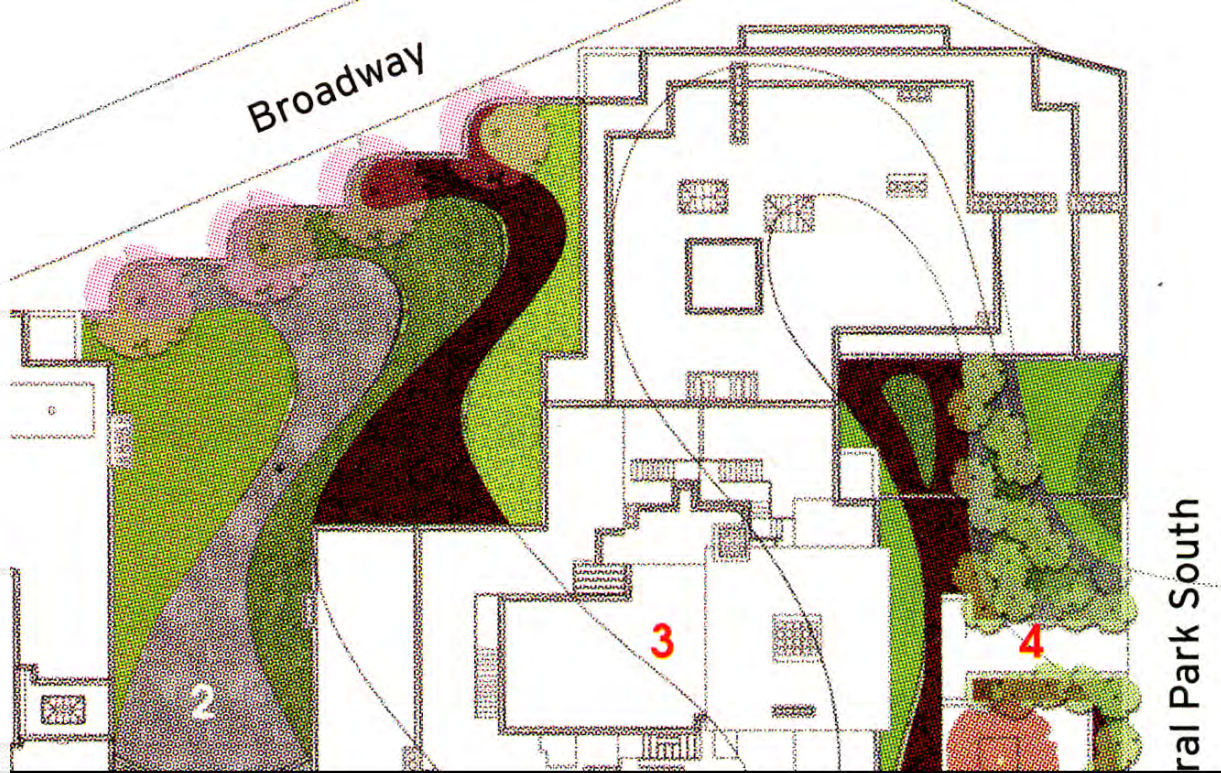
By flattening the drawing (**Layer menu > Flatten Image**) this area can be copied and pasted into another document.

240 Central Park South



1. Low-rise tower 2. Green roof 3. High-rise tower 4. Entry Courtyard

Successful composite drawings use a combination of textures, colors and transparency to generate a layered appearance to the drawing.





Muted colors on architectural drawings are appropriate – fully saturated colors will distract from the content of the drawing, so this must be avoided.

A test plot is necessary to confirm that colors will print the way you intend.

A test plot need not be full-scale; half-scale is appropriate.

