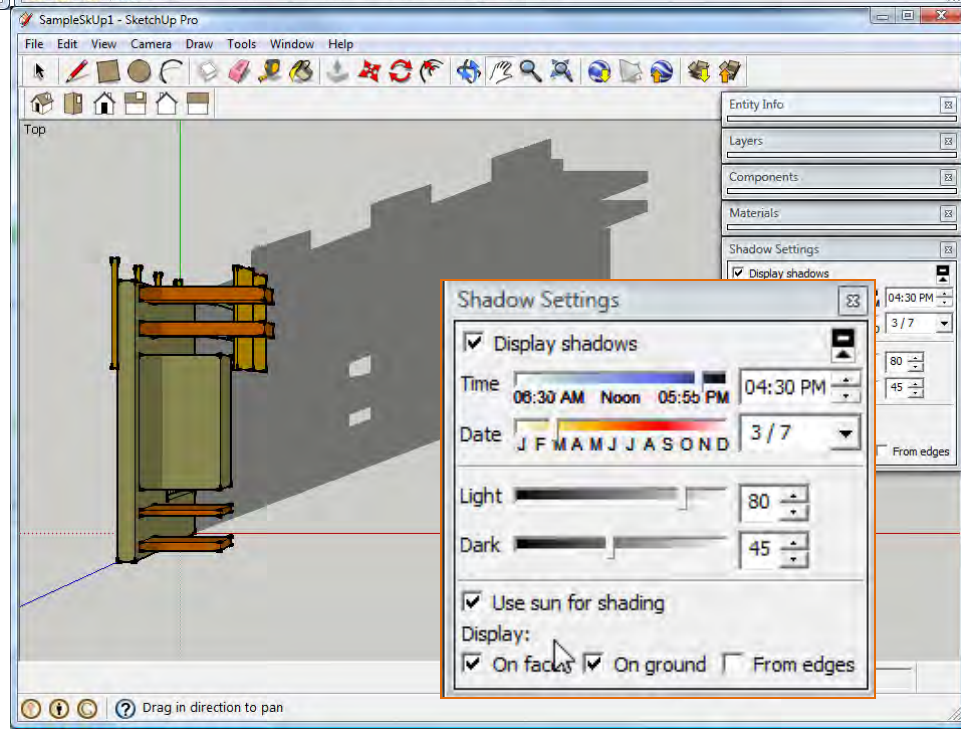


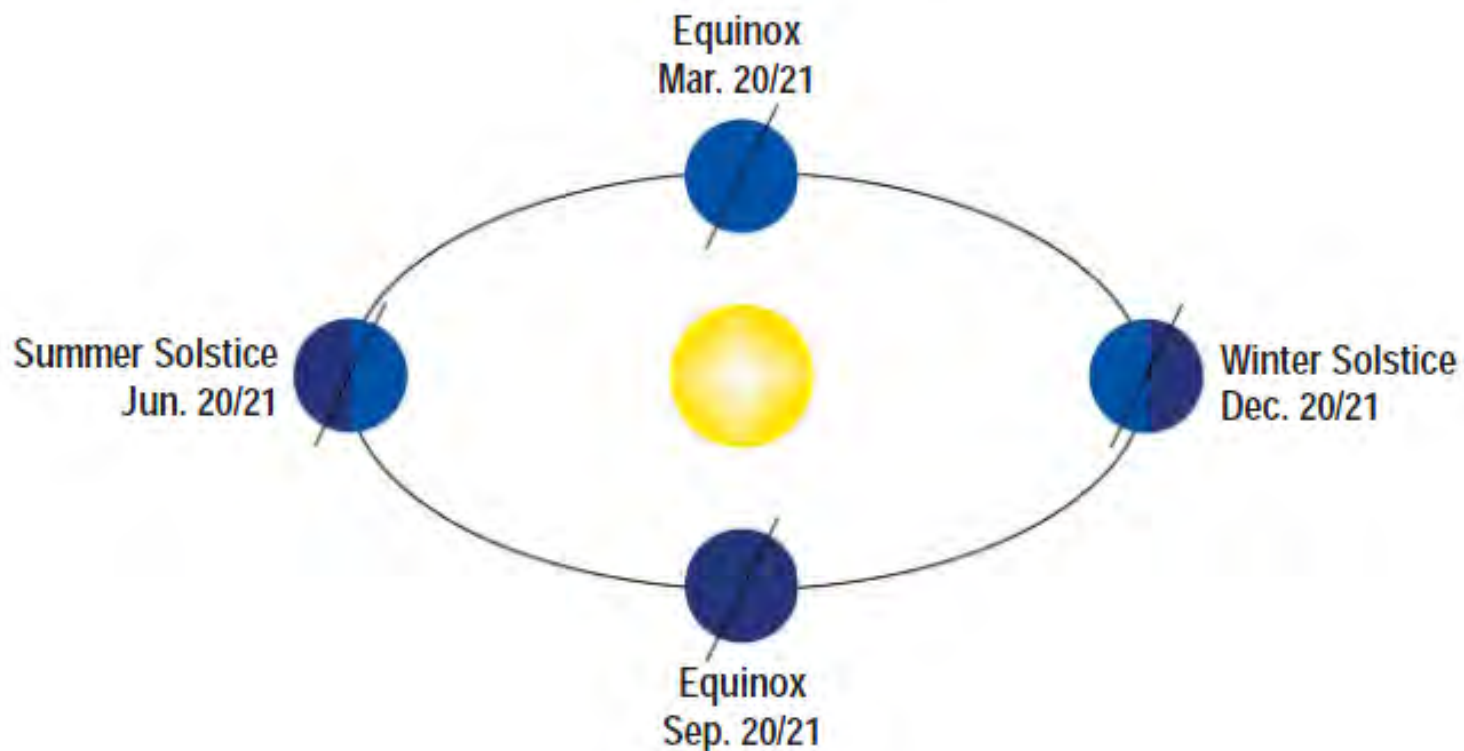
Use the **Shadow Settings** to adjust the date / time to explore the performance of your model.



Remember that the **solstices** occur twice per year when the earth's axis is pointing directly at or away from the sun, causing the sun to be at its northernmost and southernmost extremes.

This results in the longest and shortest days of the year.

Equinoxes also occur twice annually and are the moment when the sun is positioned directly over the earth's equator, resulting in a day and night of equal length.





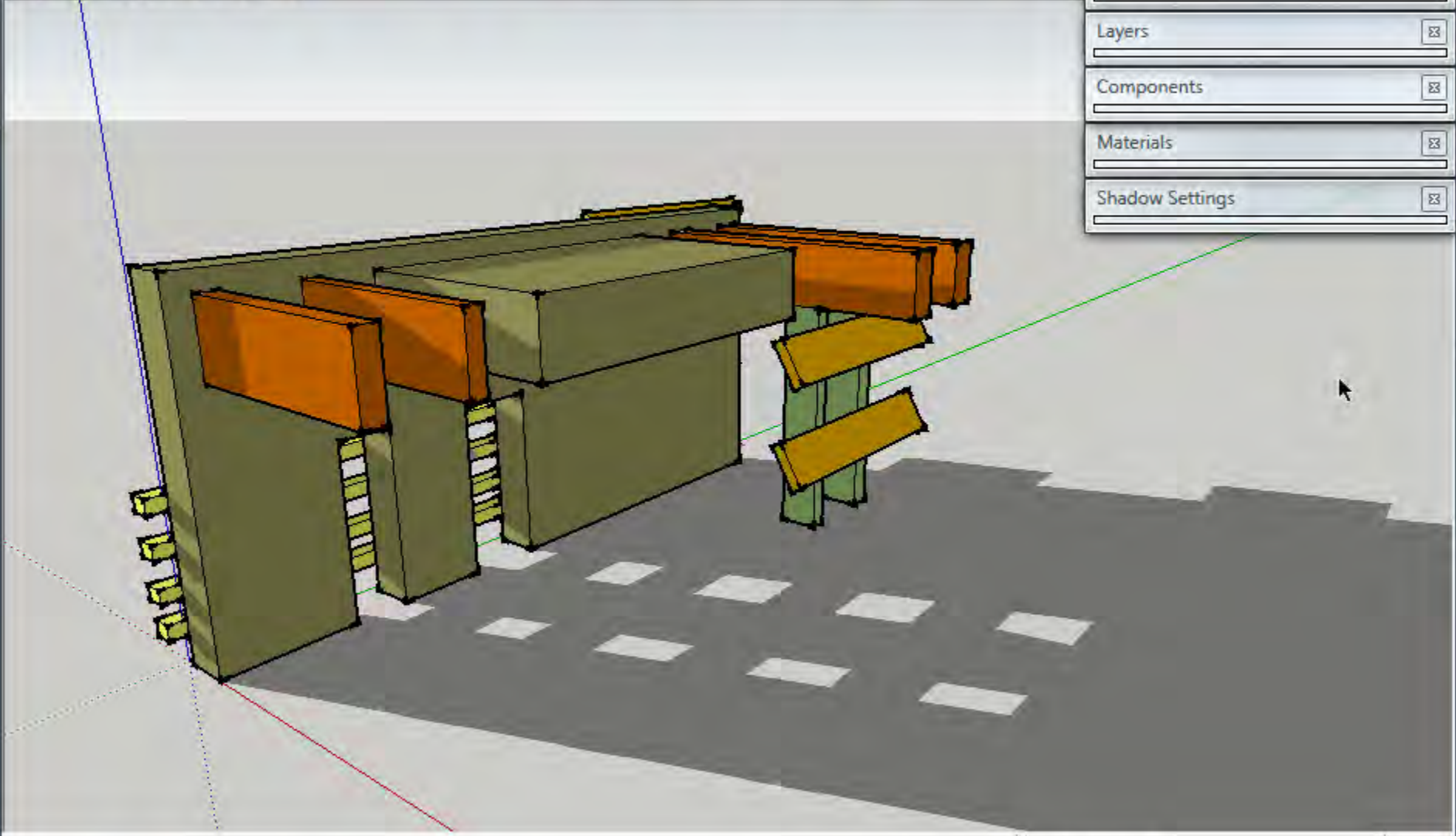
Entity Info ☐

Layers ☐

Components ☐

Materials ☐

Shadow Settings ☐



Measurements

Window Help

- Model Info
- Entity Info
- Materials
- Components
- Styles
- Layers
- Outliner
- Scenes
- Shadows
- Fog
- Match Photo
- Soften Edges
- Instructor
- Preferences
- Hide Dialogs
- Ruby Console
- Component Options
- Component Attributes

A model's appearance while you work with it need not be the same as when images are exported from it for presentation. Use the **Styles** menu to alter its appearance:
Window menu>Styles.

Entity Info

Layers

Components

Materials

Shadow Settings

Styles



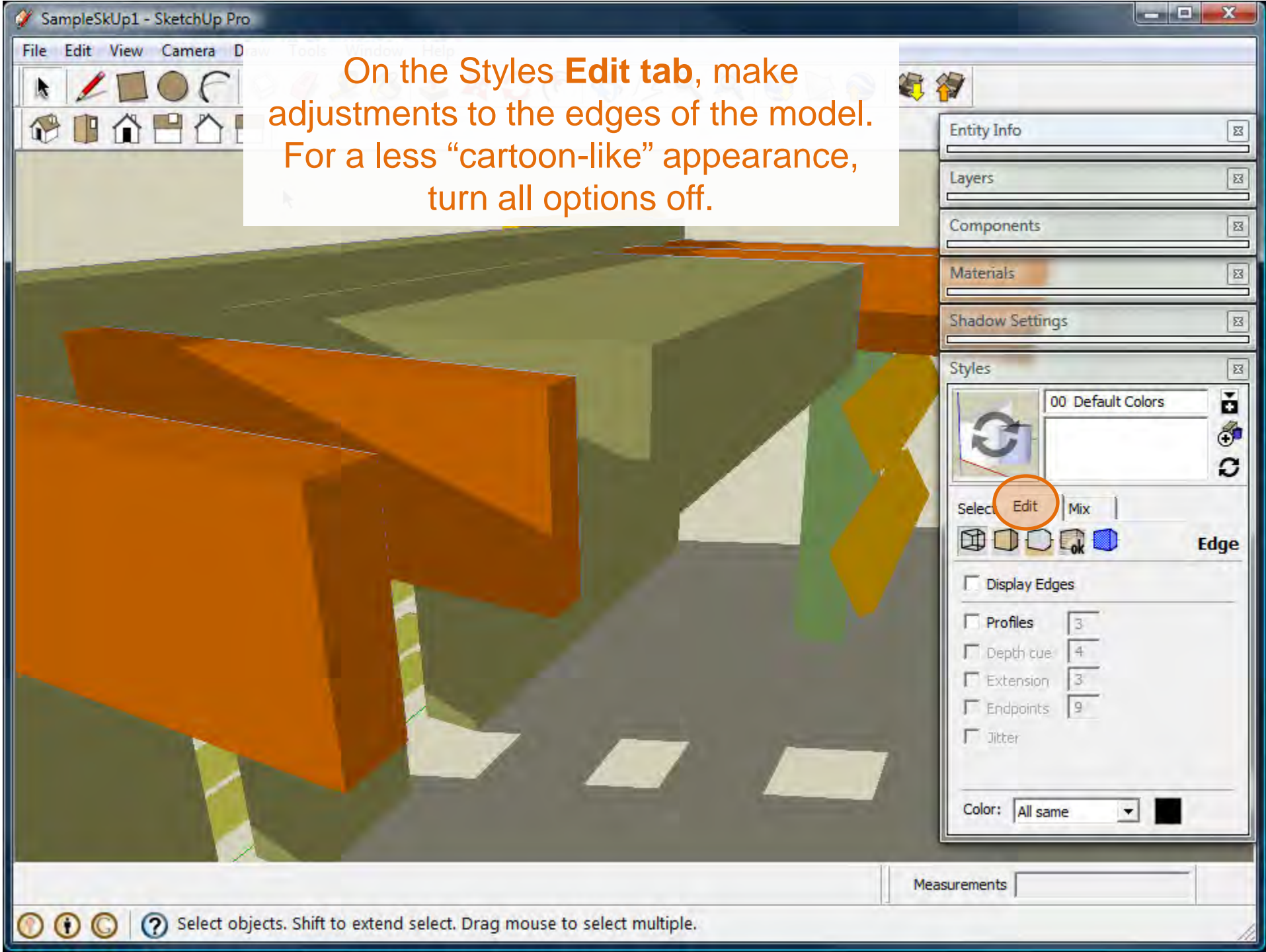
Dark Green and Orange

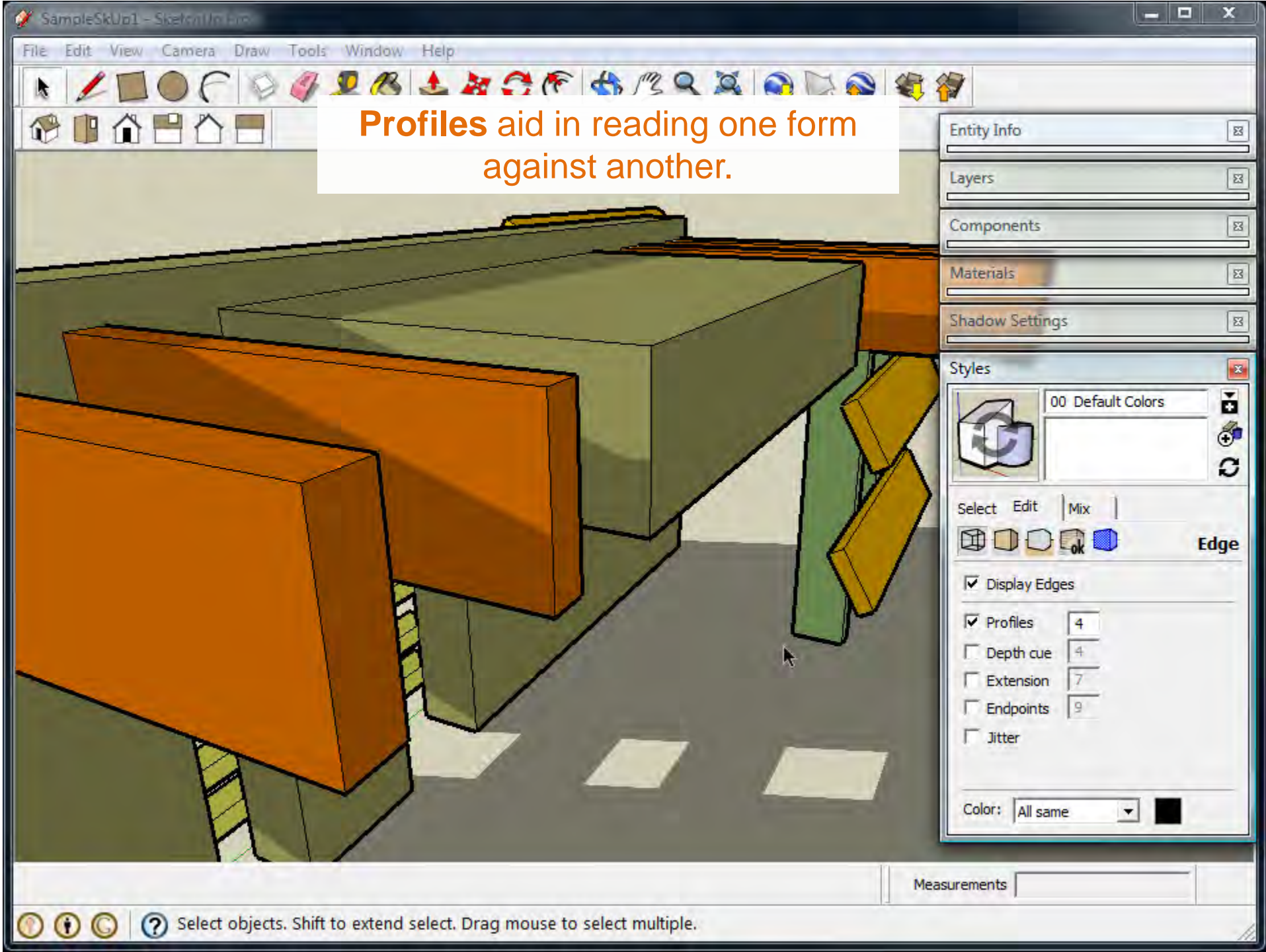
Select Edit Mix

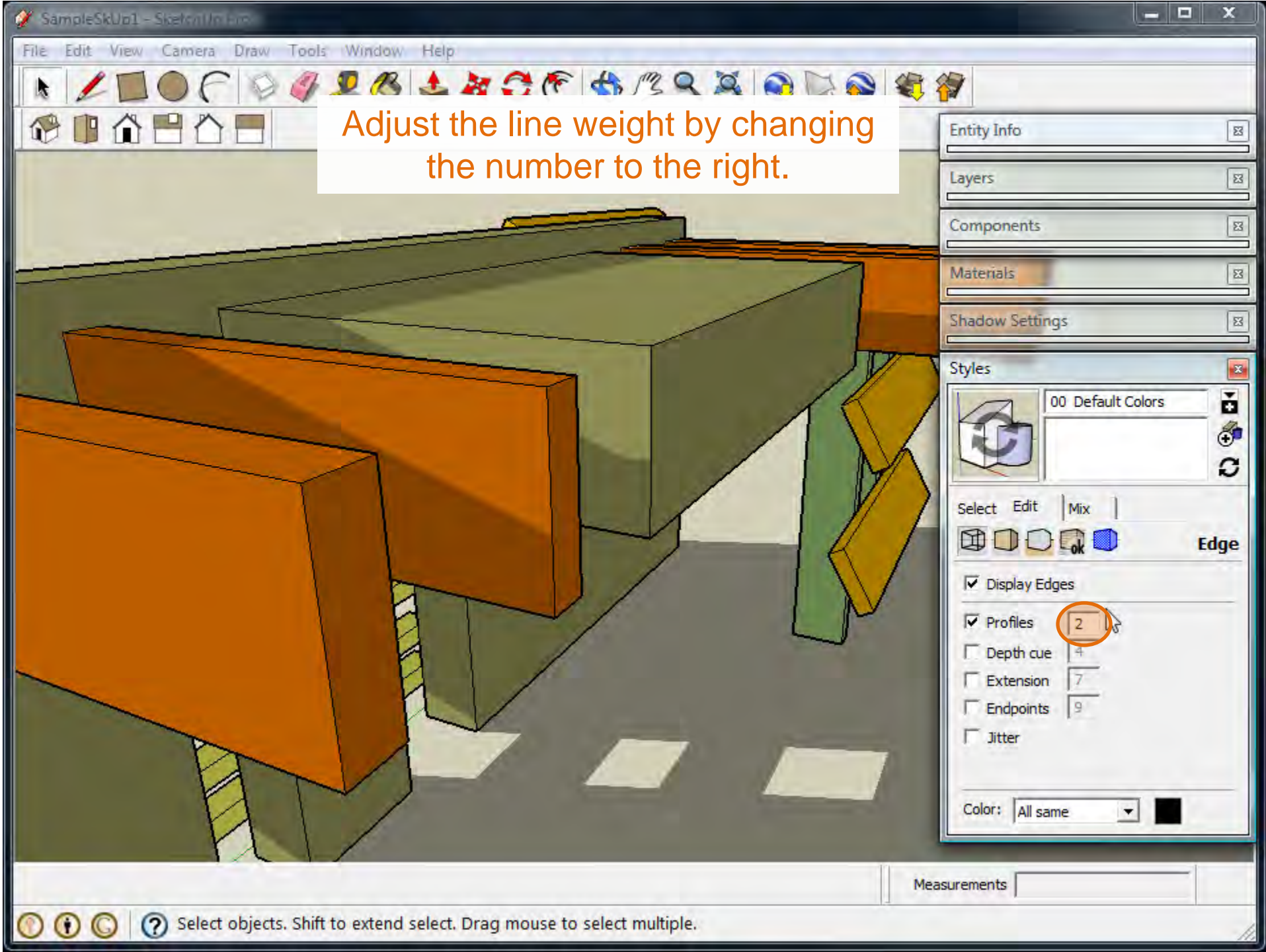
Color Sets

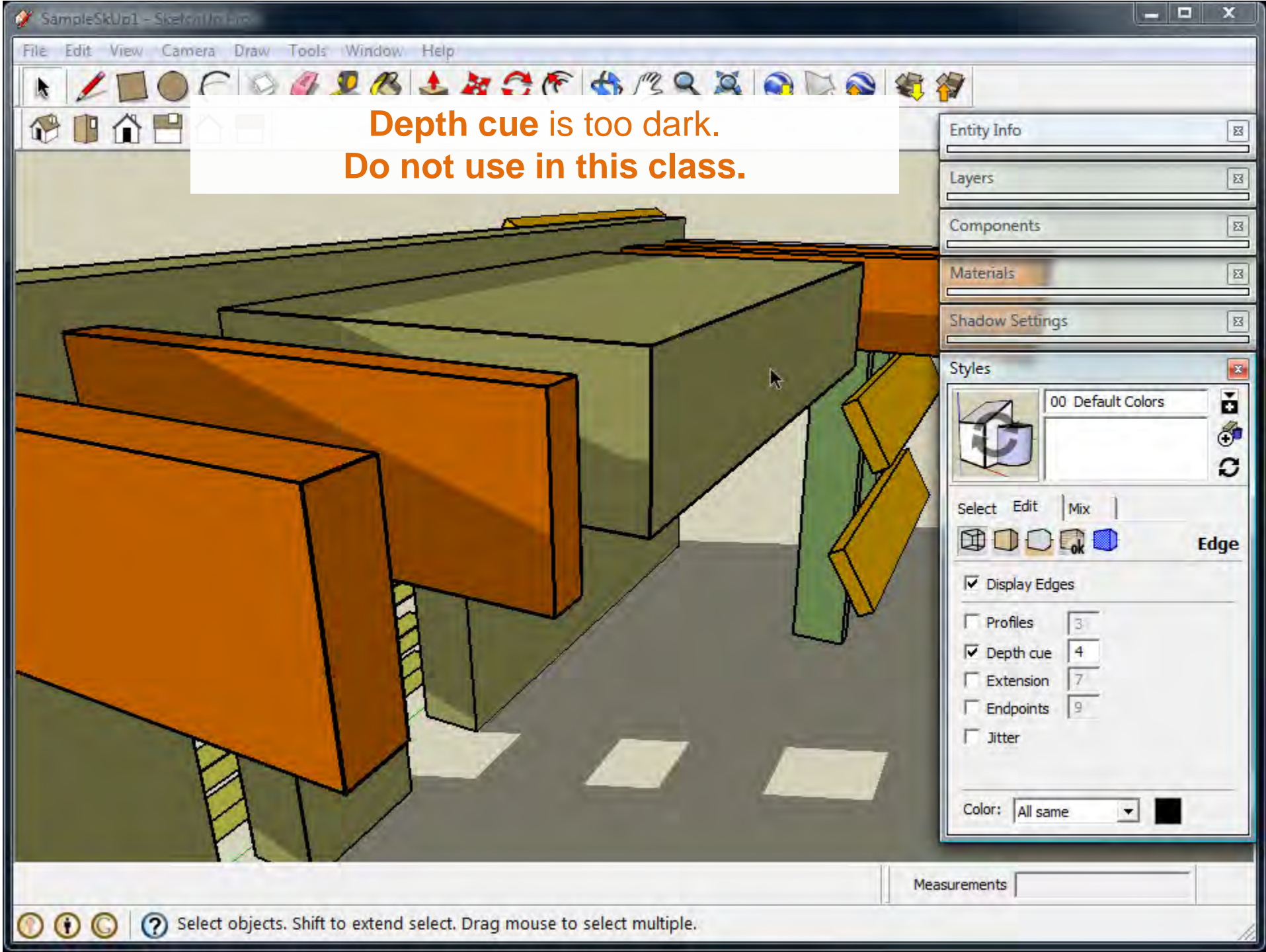


Measurements









Extension overexaggerates intersections –
you may adjust the amount of extension.

Entity Info

Layers

Components

Materials

Shadow Settings

Styles

00 Default Colors

Select Edit Mix

Edge

☒ Display Edges

☐ Profiles 3

☐ Depth cue 4

☒ Extension 7

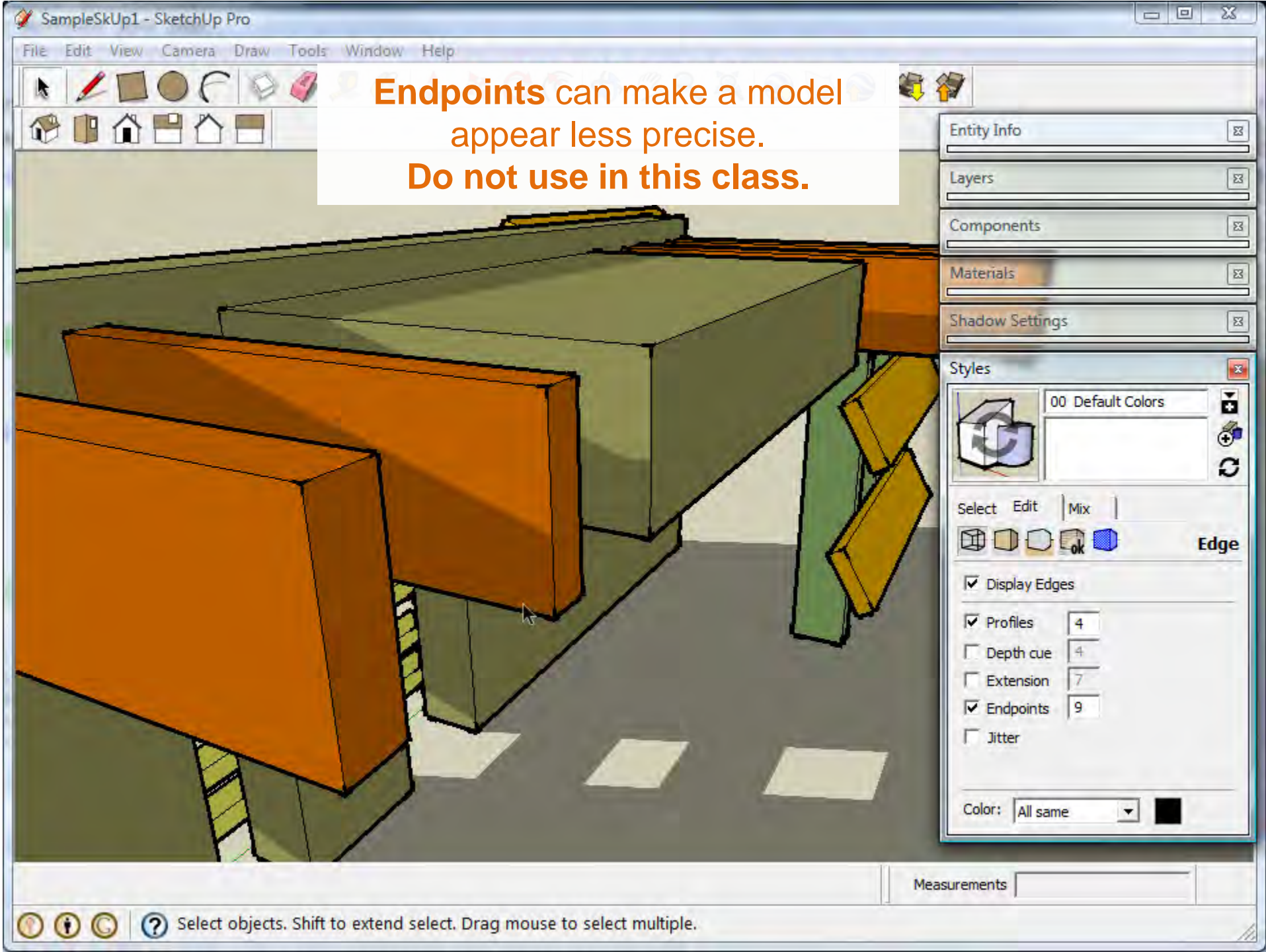
☐ Endpoints 9

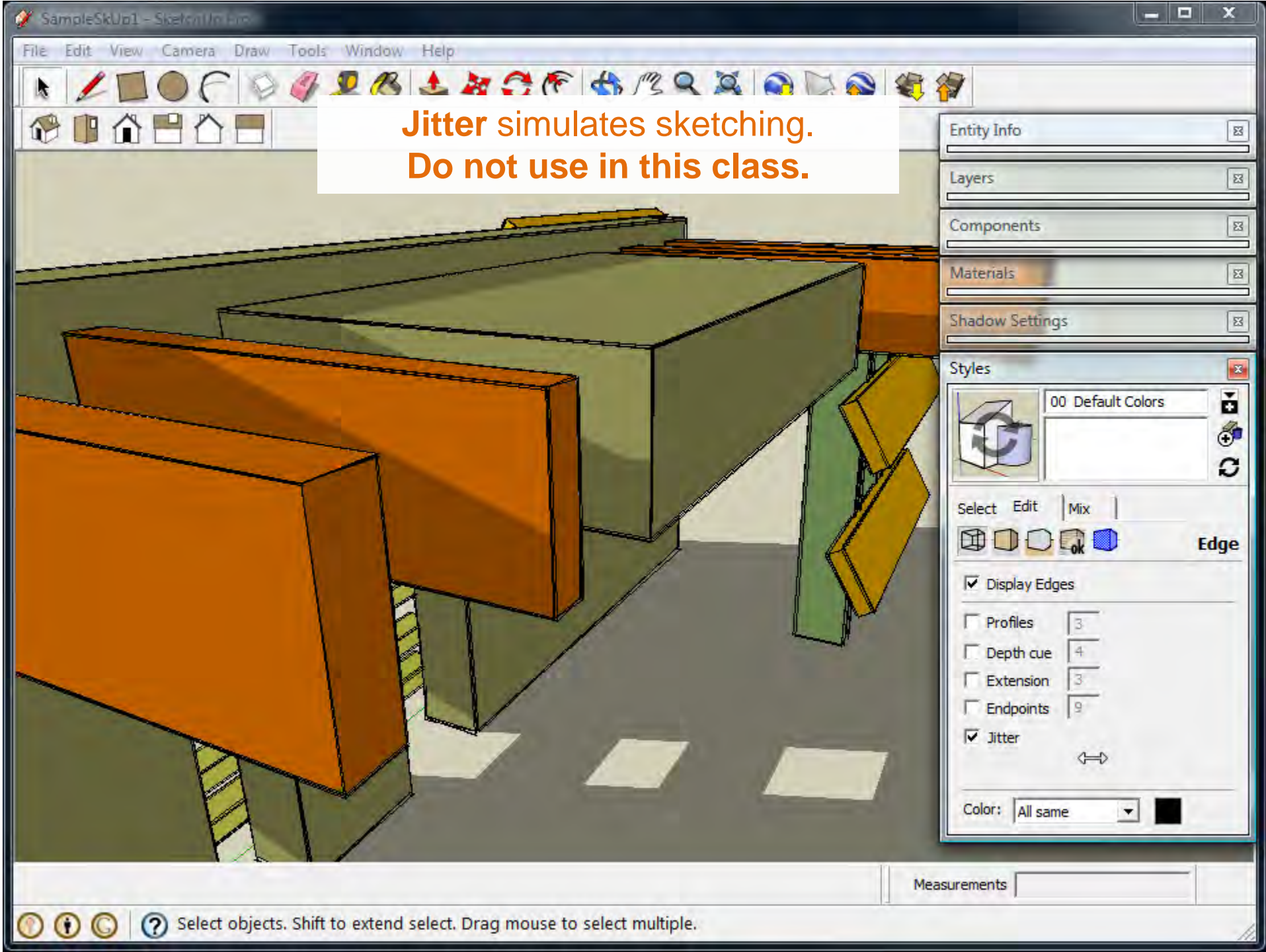
☐ Jitter

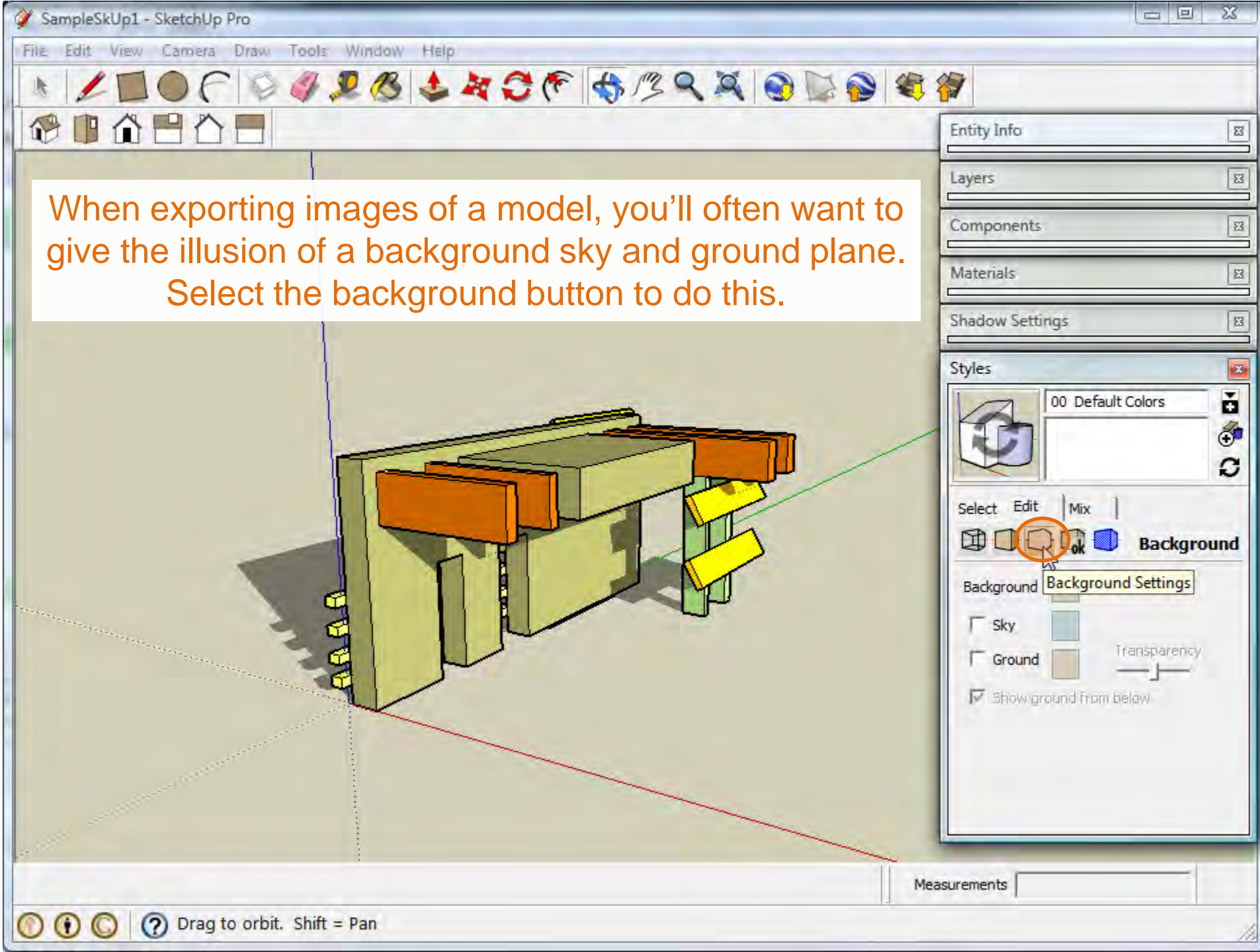
Color: All same

Measurements

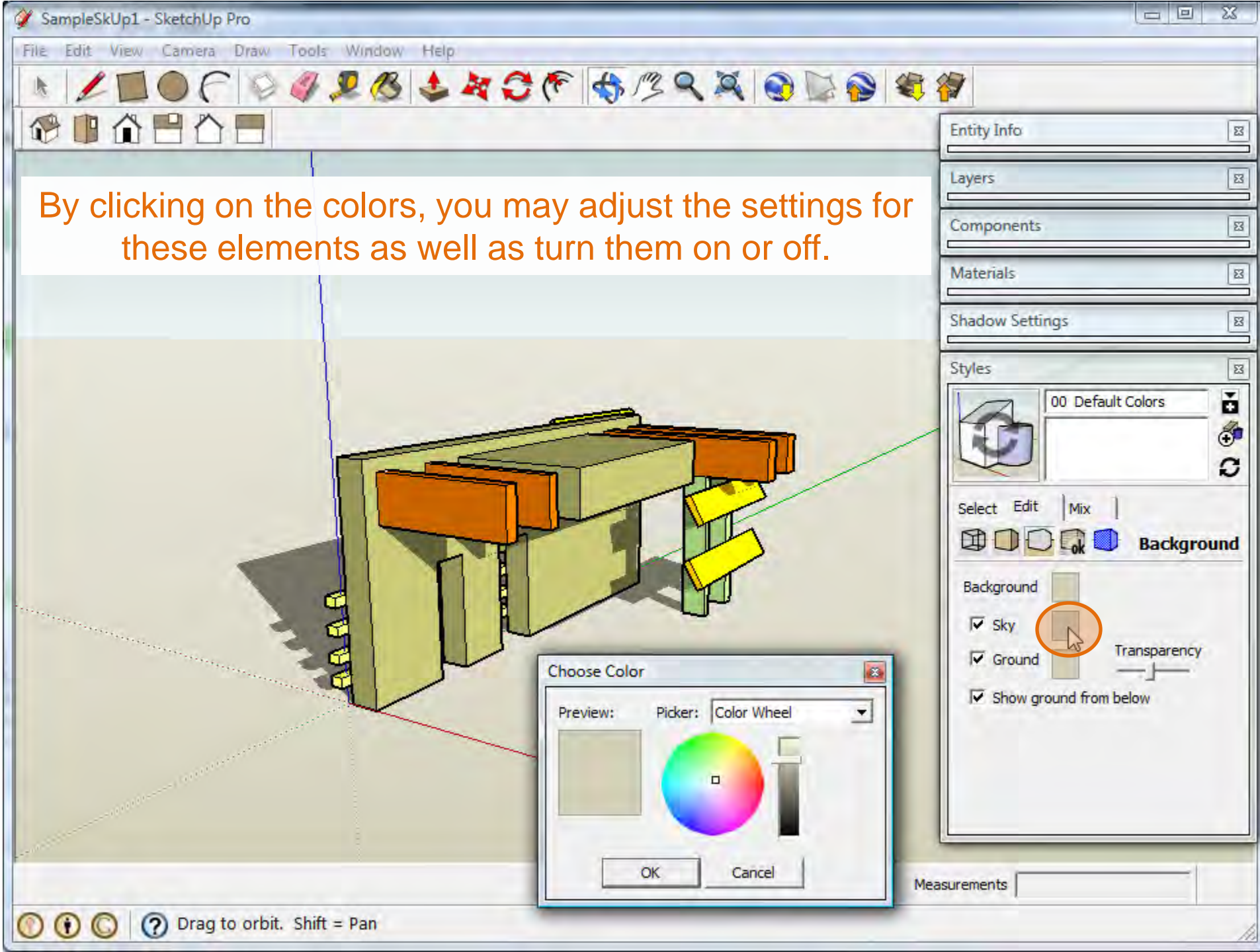
? Select objects. Shift to extend select. Drag mouse to select multiple.



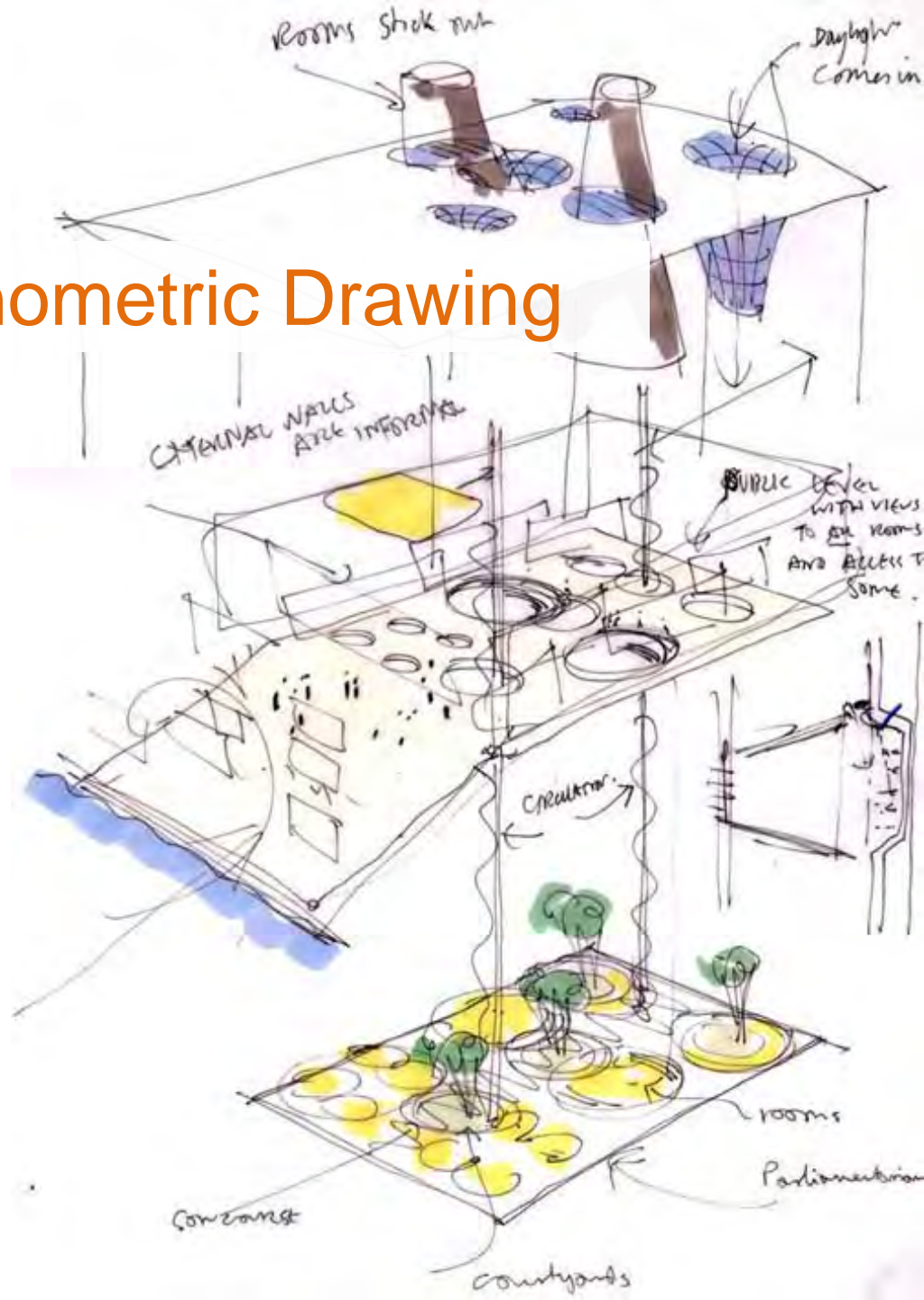
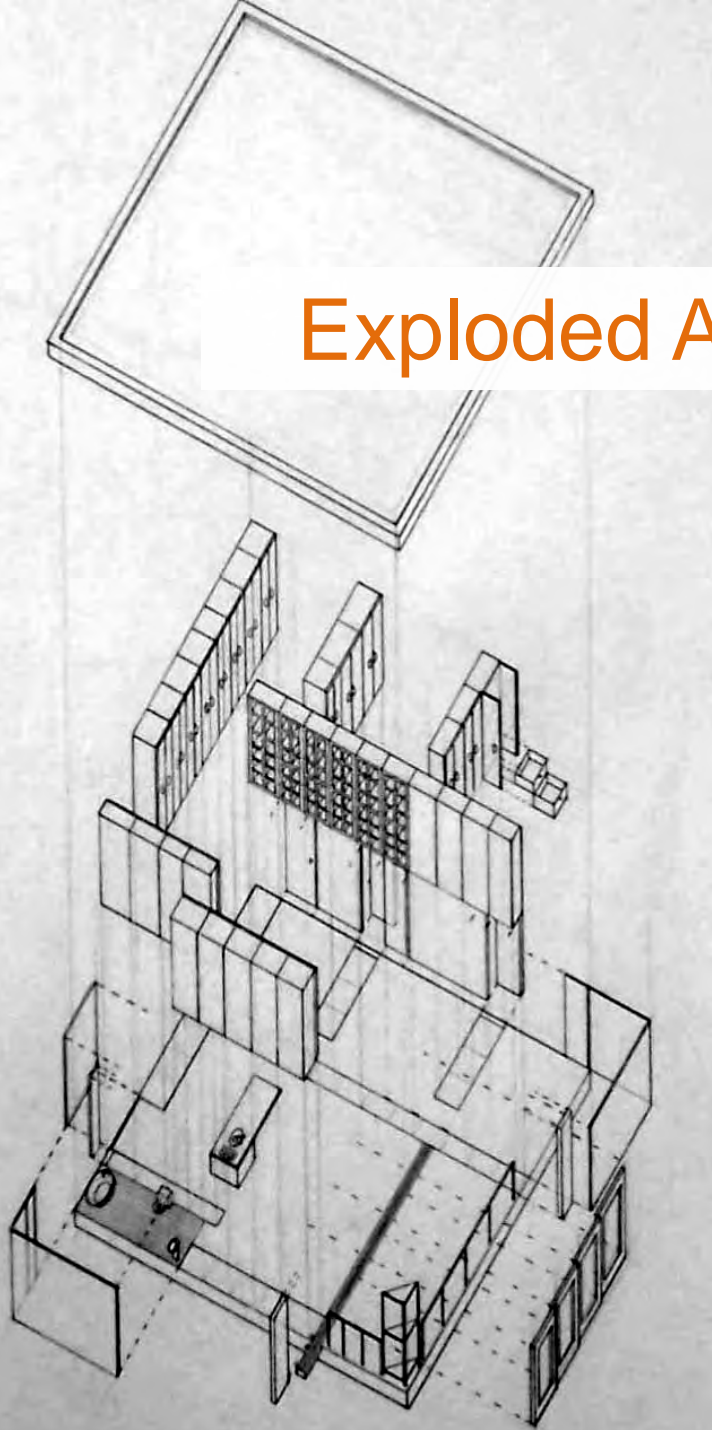


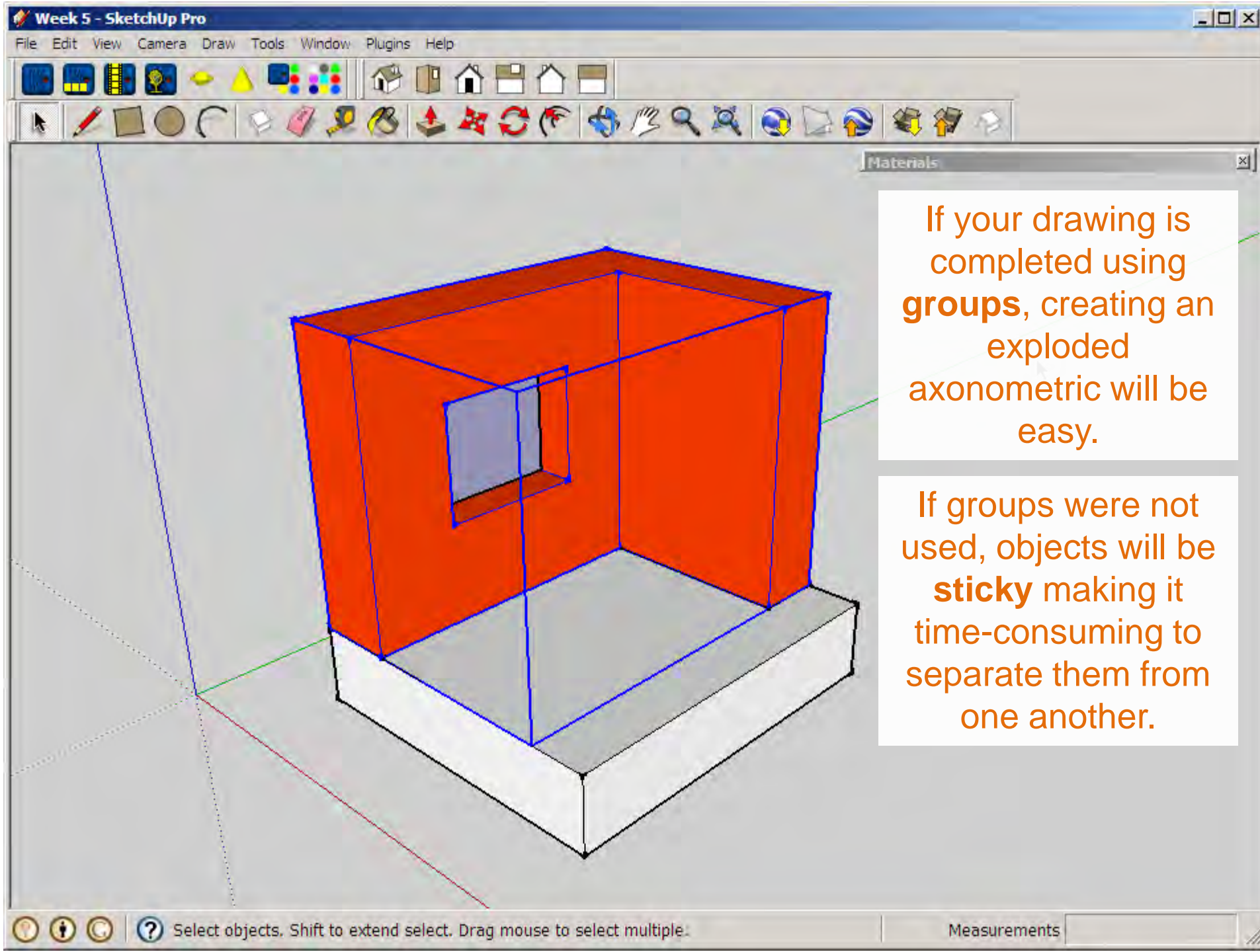


When exporting images of a model, you'll often want to give the illusion of a background sky and ground plane. Select the background button to do this.



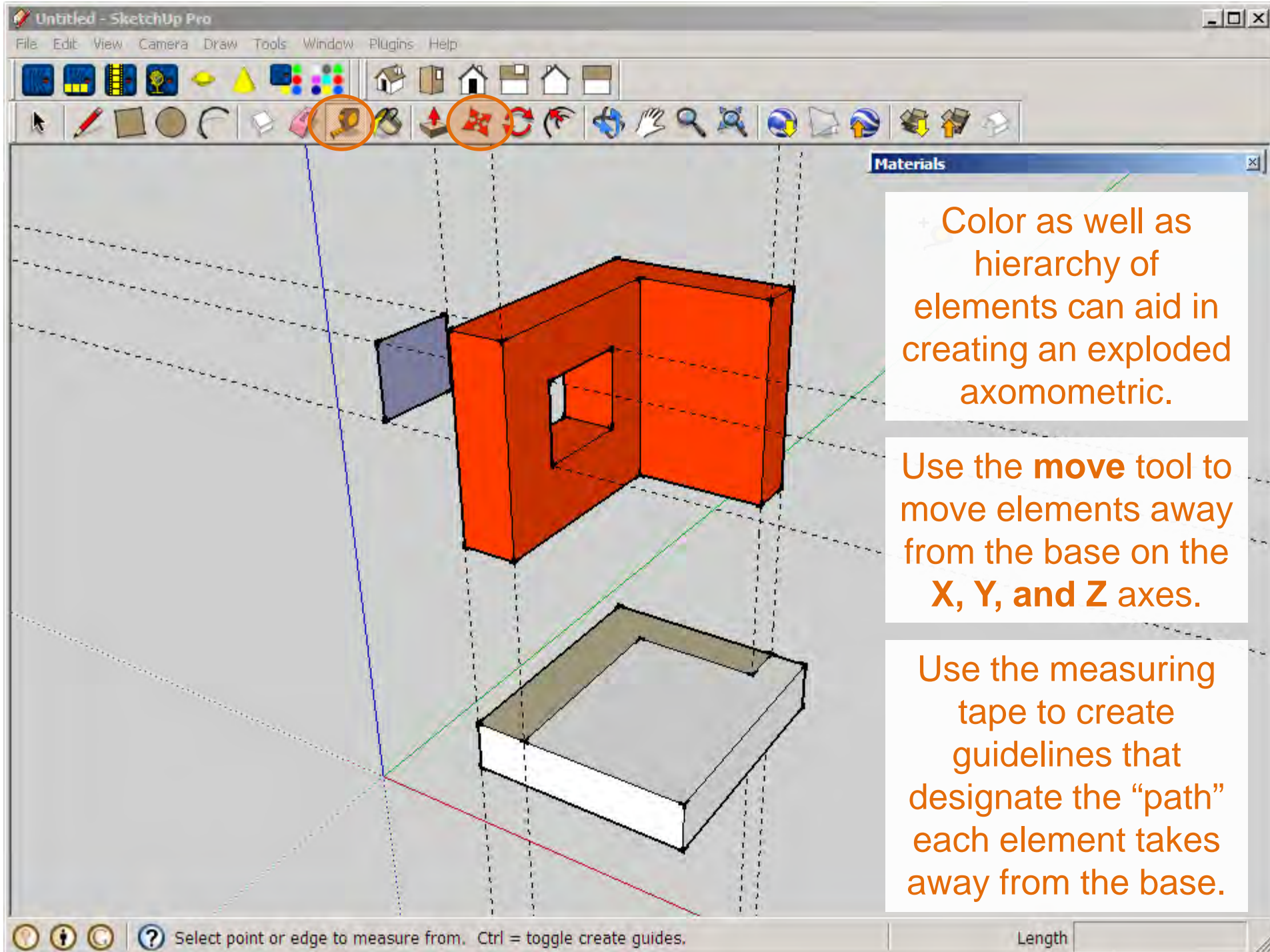
Exploded Axonometric Drawing





If your drawing is completed using **groups**, creating an exploded axonometric will be easy.

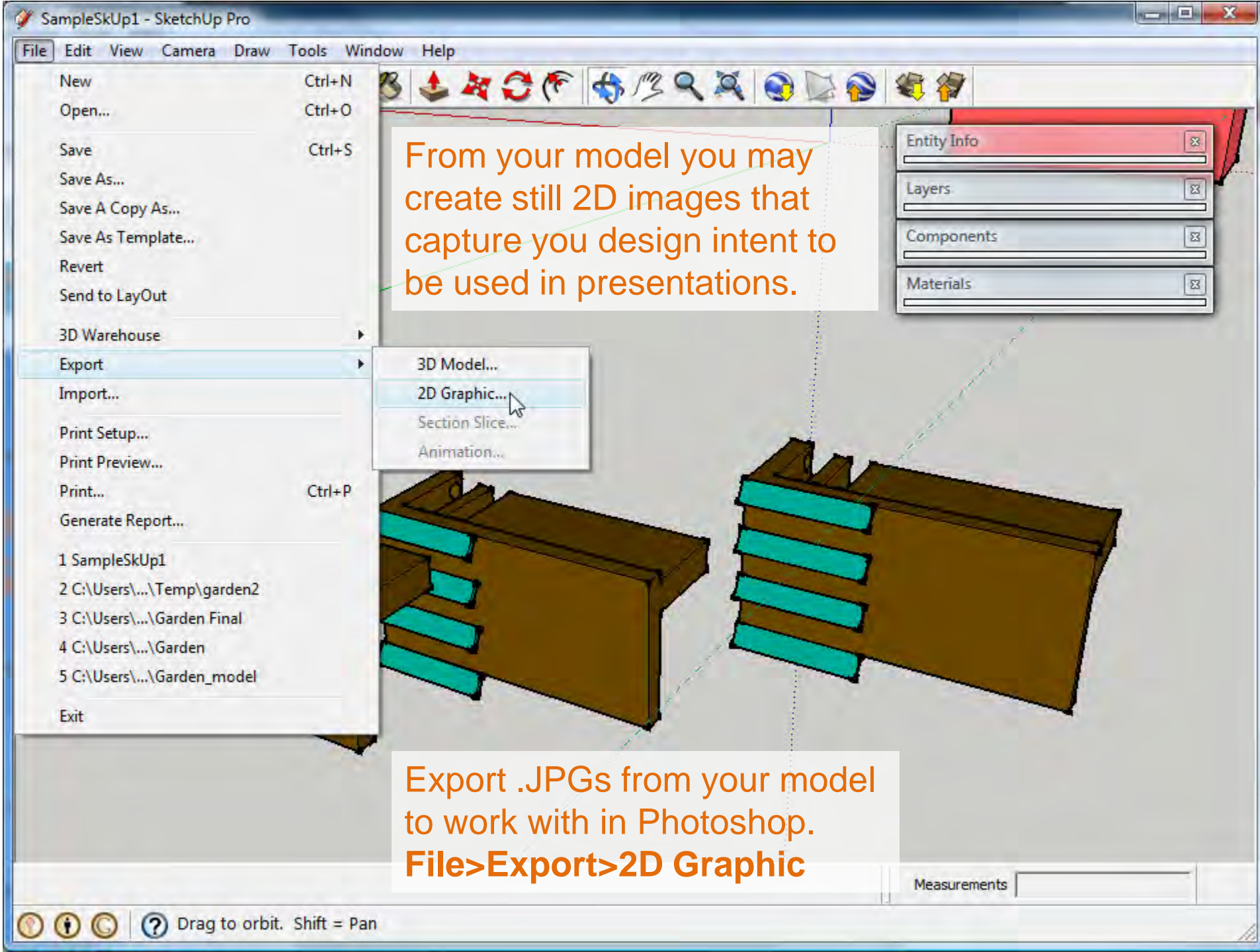
If groups were not used, objects will be **sticky** making it time-consuming to separate them from one another.

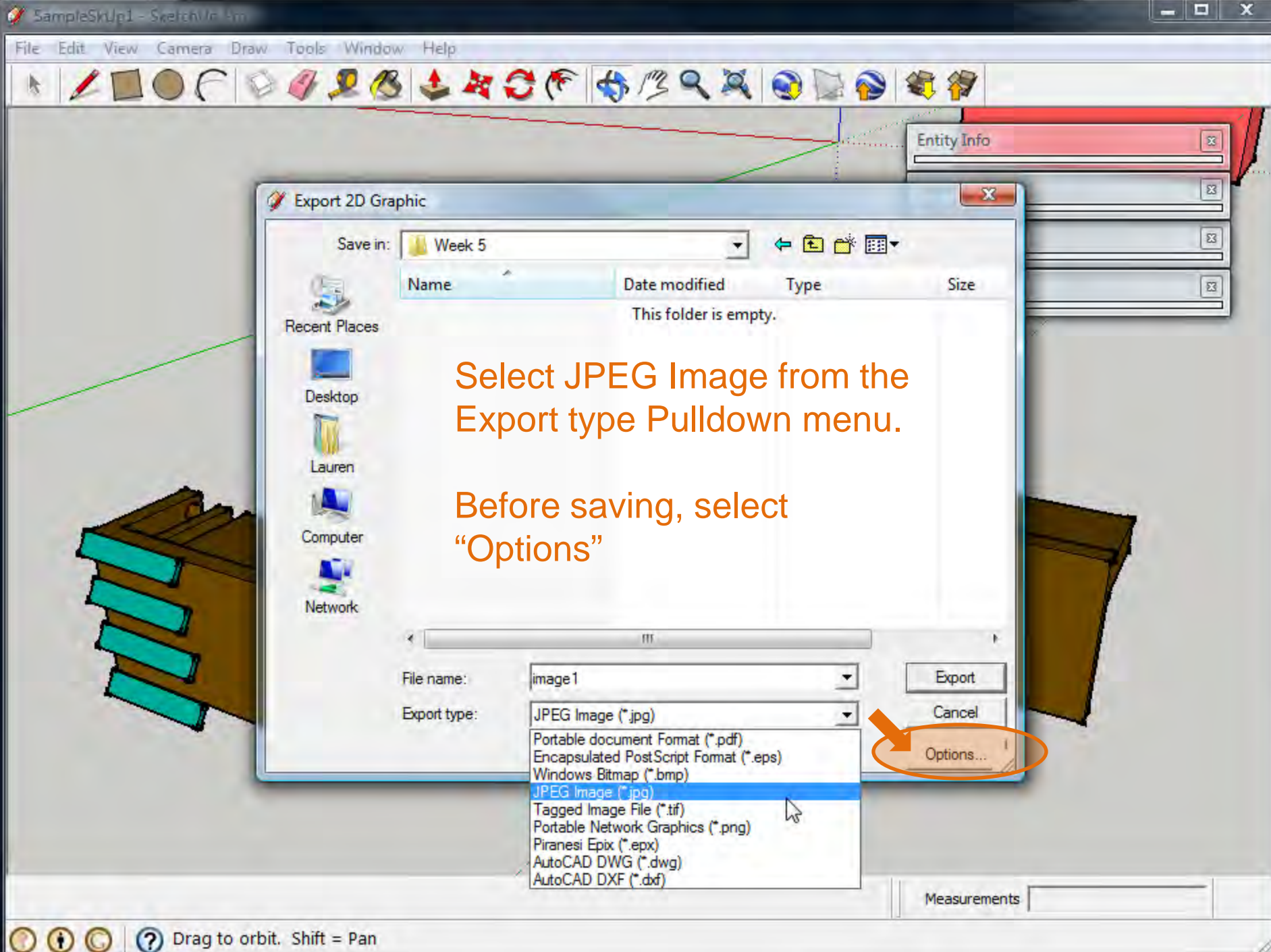


Color as well as hierarchy of elements can aid in creating an exploded axonometric.

Use the **move** tool to move elements away from the base on the **X, Y, and Z** axes.

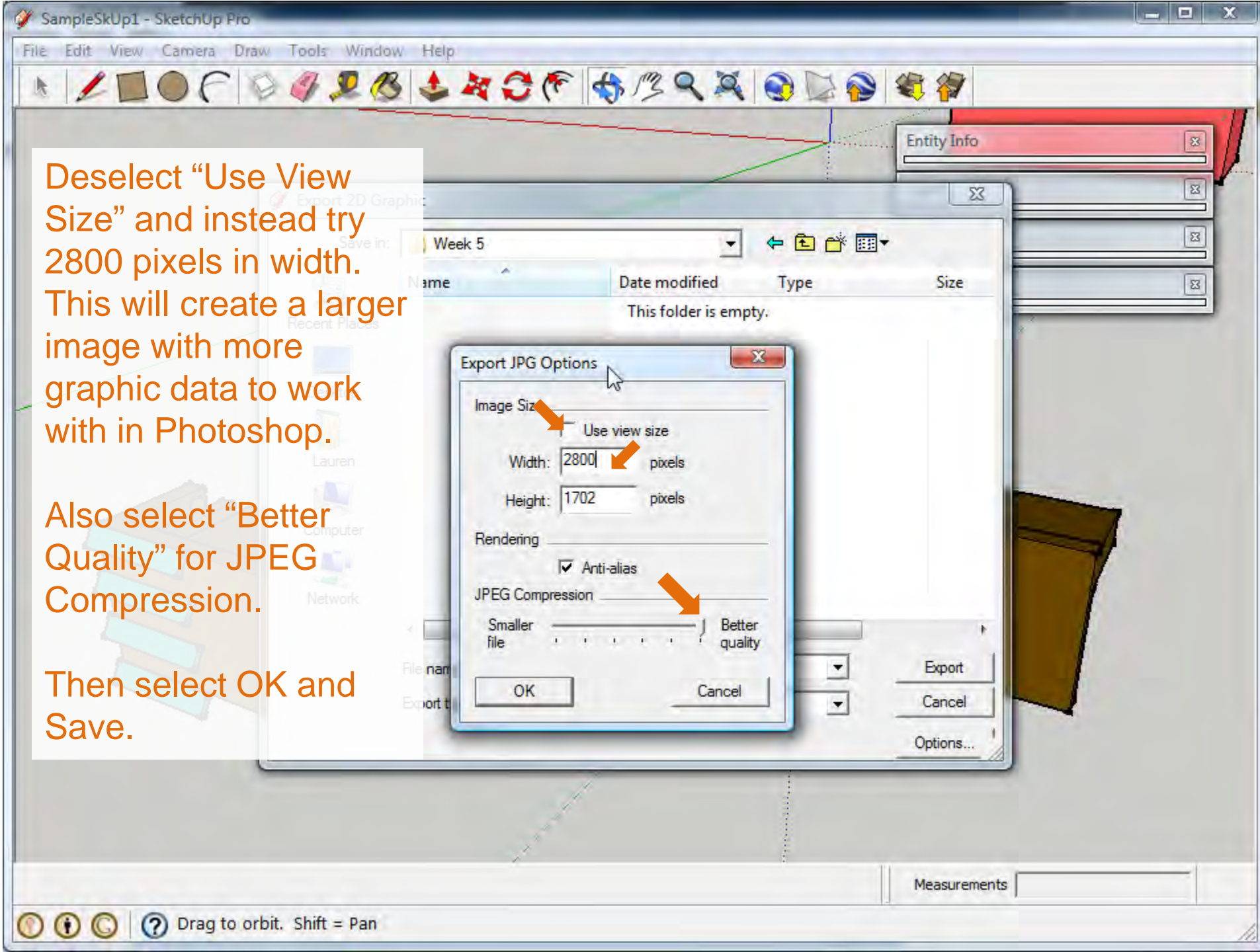
Use the measuring tape to create guidelines that designate the “path” each element takes away from the base.





Select JPEG Image from the Export type Pulldown menu.

Before saving, select "Options"



Deselect "Use View Size" and instead try 2800 pixels in width. This will create a larger image with more graphic data to work with in Photoshop.

Also select "Better Quality" for JPEG Compression.

Then select OK and Save.