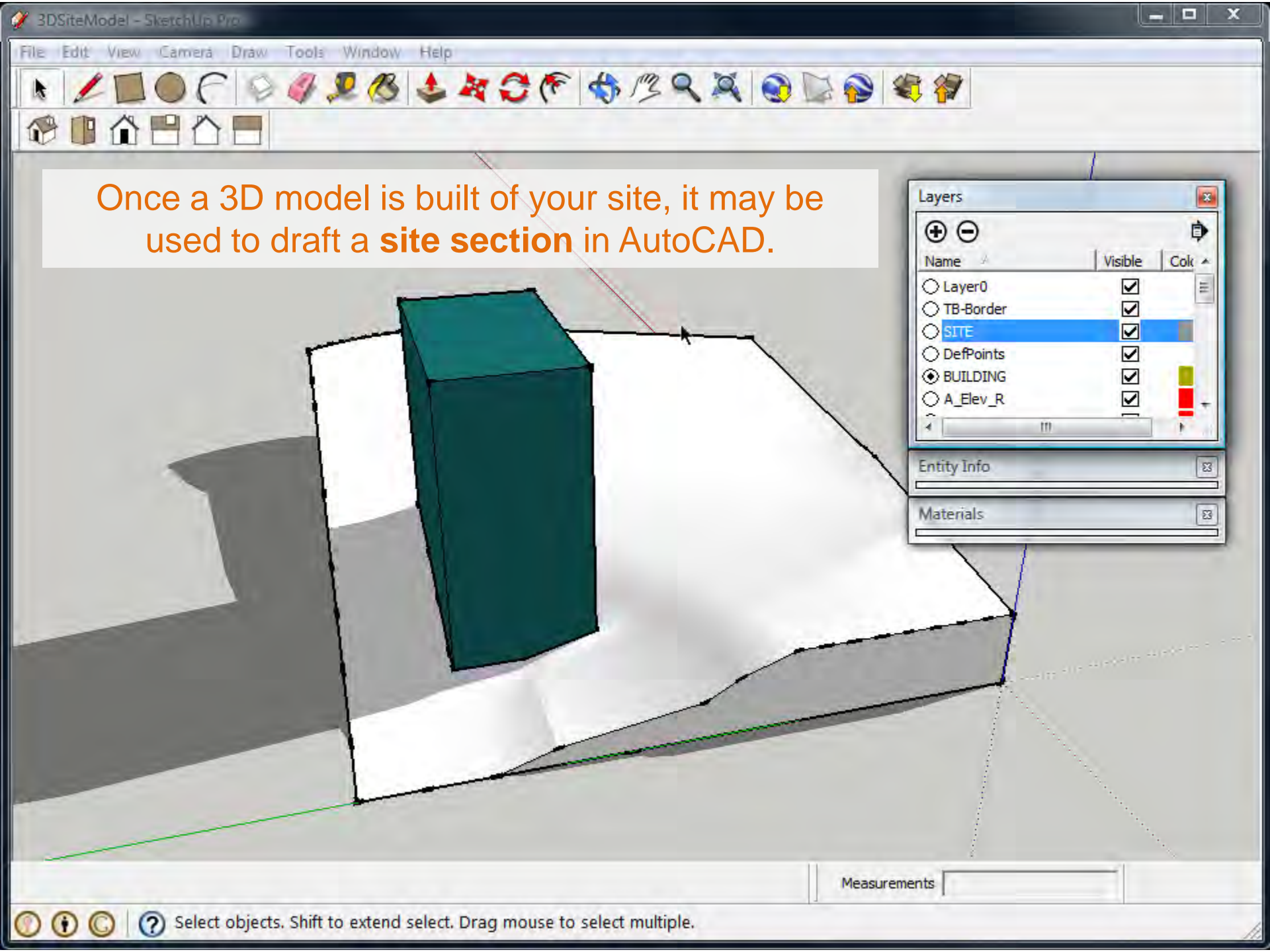


Arch 150

Week 8

**Using the Section Cut tool
to generate a site section**



Once a 3D model is built of your site, it may be used to draft a **site section** in AutoCAD.

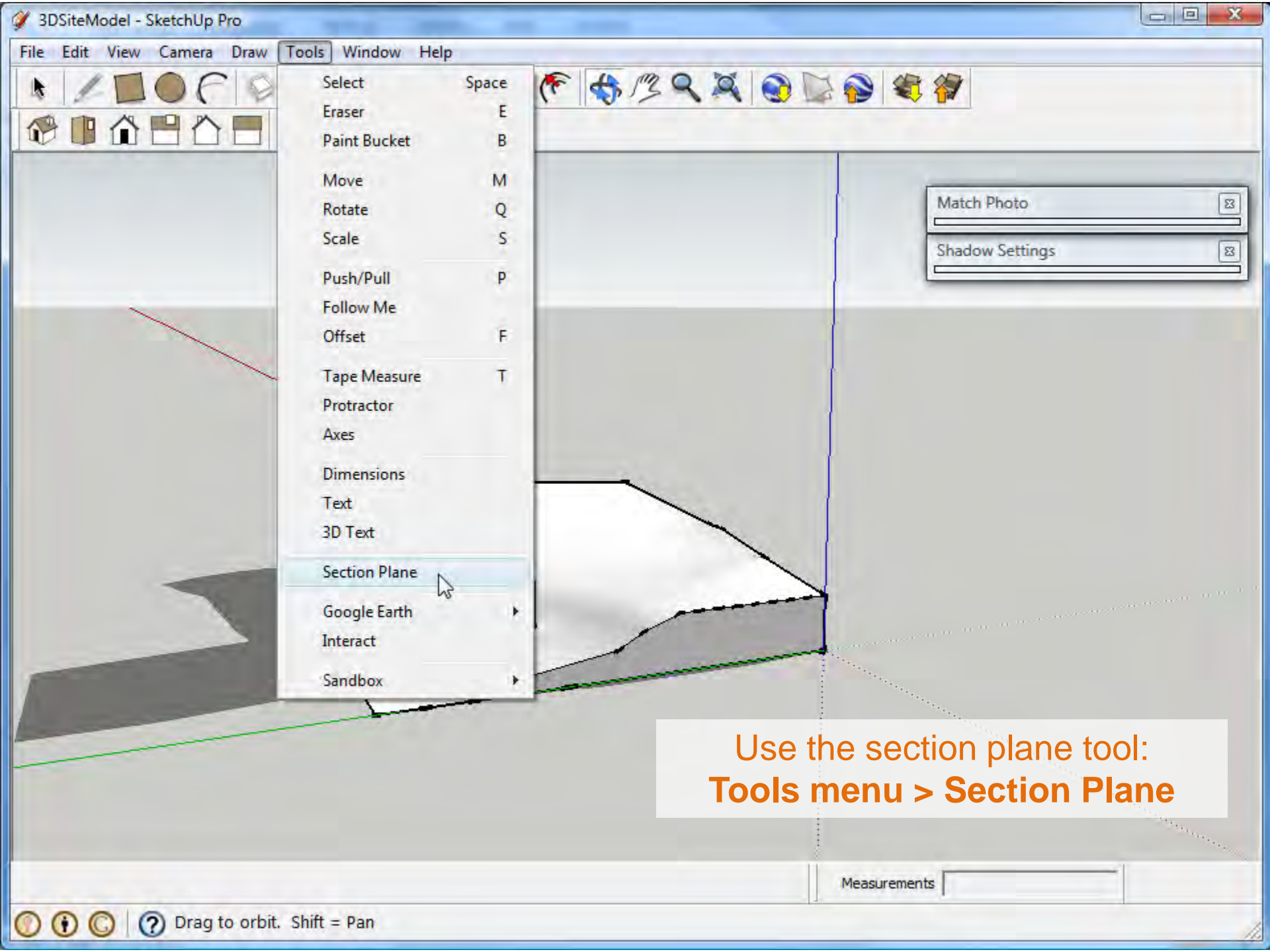
Layers

| Name | Visible | Color |
|---|-------------------------------------|-------|
| <input type="radio"/> Layer0 | <input checked="" type="checkbox"/> | |
| <input type="radio"/> TB-Border | <input checked="" type="checkbox"/> | |
| <input type="radio"/> SITE | <input checked="" type="checkbox"/> | |
| <input type="radio"/> DefPoints | <input checked="" type="checkbox"/> | |
| <input checked="" type="radio"/> BUILDING | <input checked="" type="checkbox"/> | |
| <input type="radio"/> A_Elev_R | <input checked="" type="checkbox"/> | |

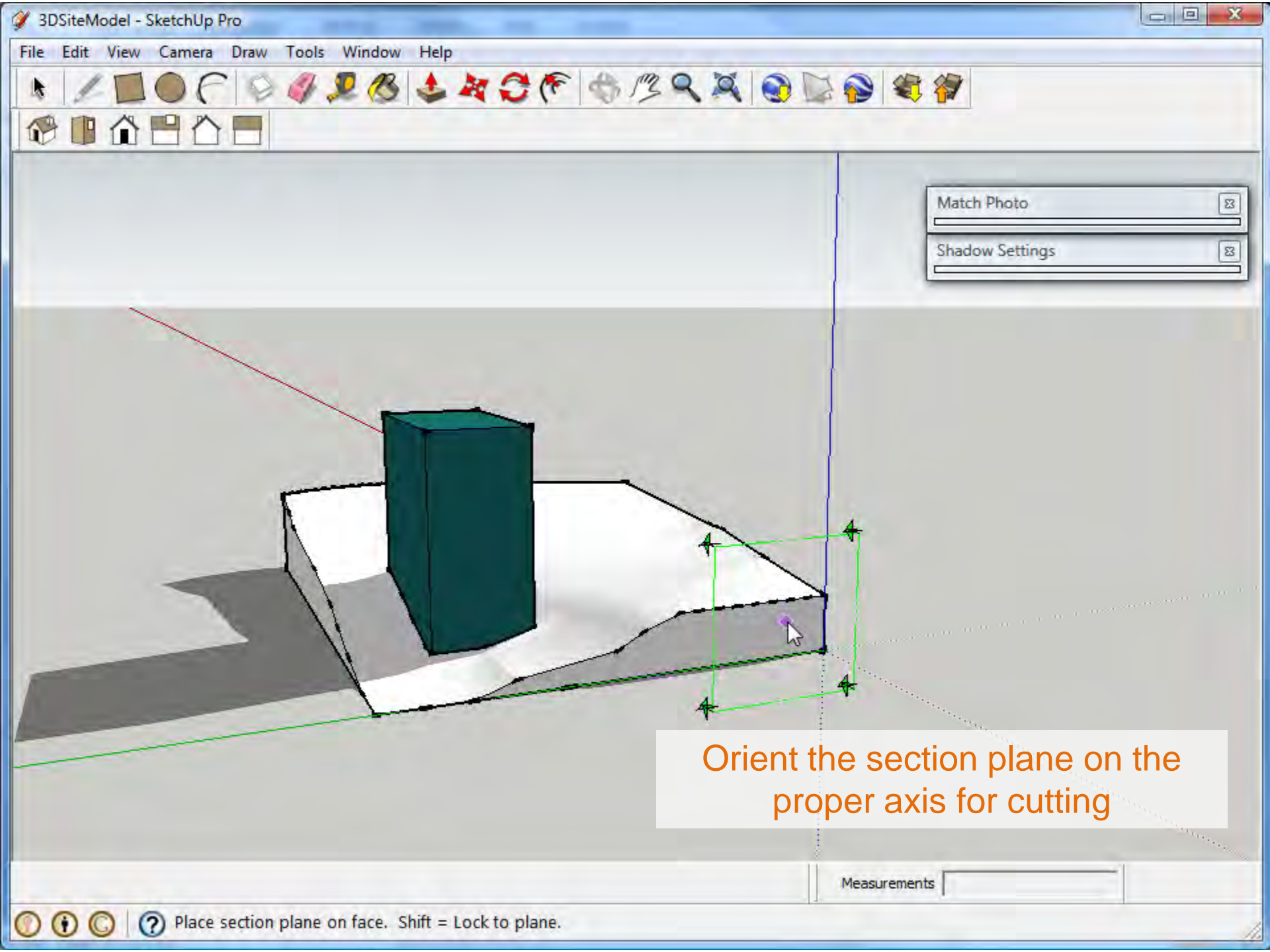
Entity Info

Materials

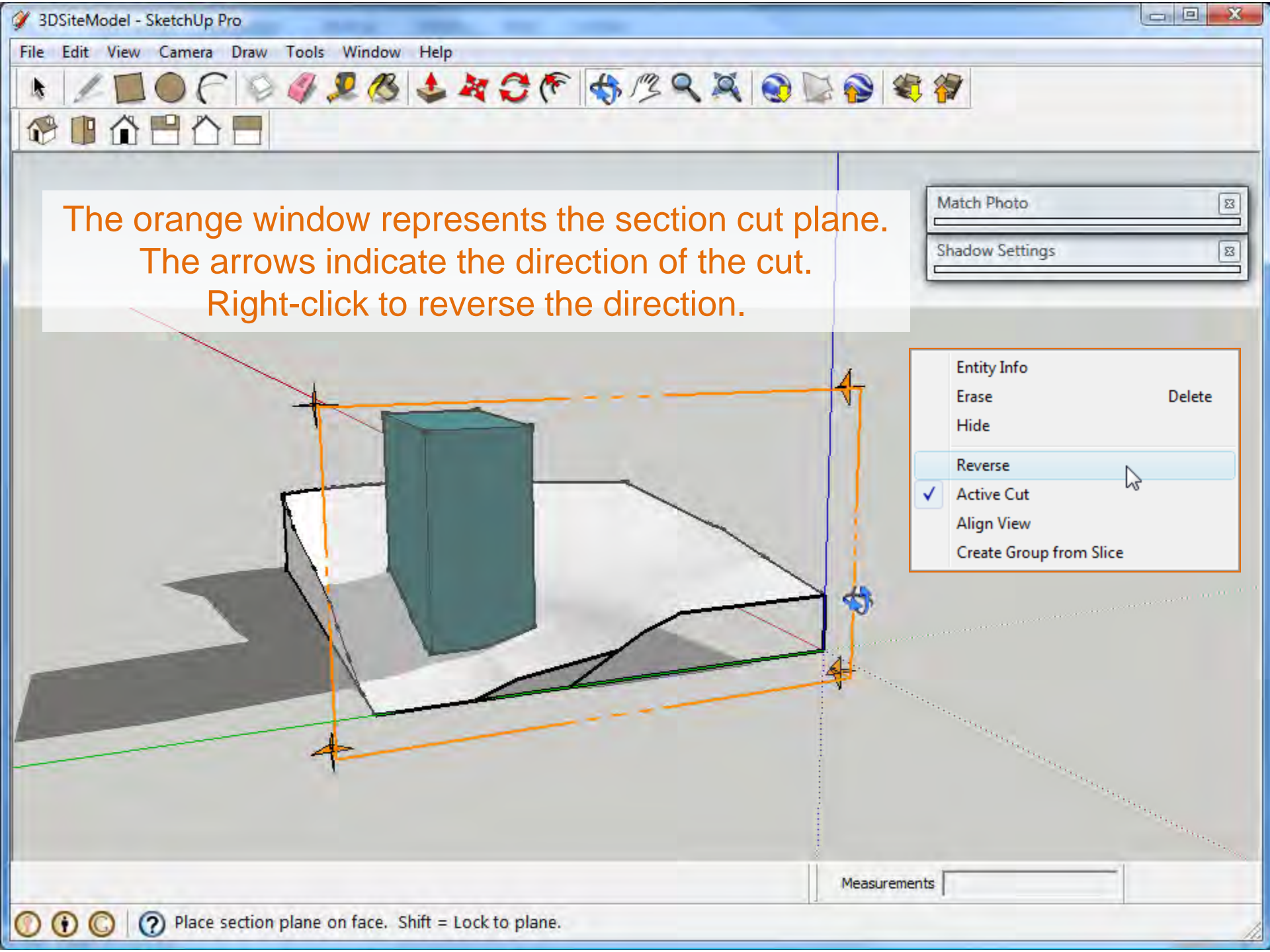
Measurements



Use the section plane tool:
Tools menu > Section Plane



Orient the section plane on the proper axis for cutting



The orange window represents the section cut plane.
The arrows indicate the direction of the cut.
Right-click to reverse the direction.

Match Photo

Shadow Settings

Entity Info

Erase Delete

Hide

Reverse

Active Cut

Align View

Create Group from Slice

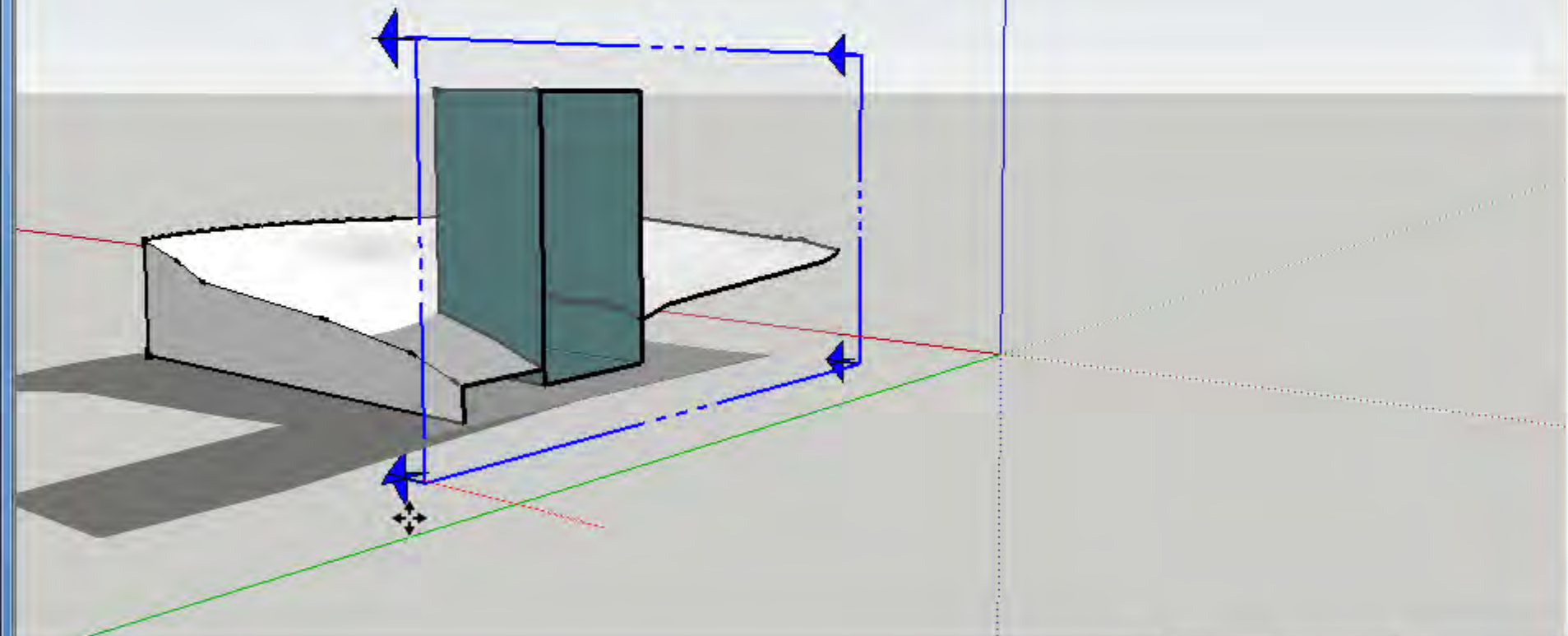
Measurements



Use the **move** tool to change the location of the cutting plane.

Match Photo

Shadow Settings



Length

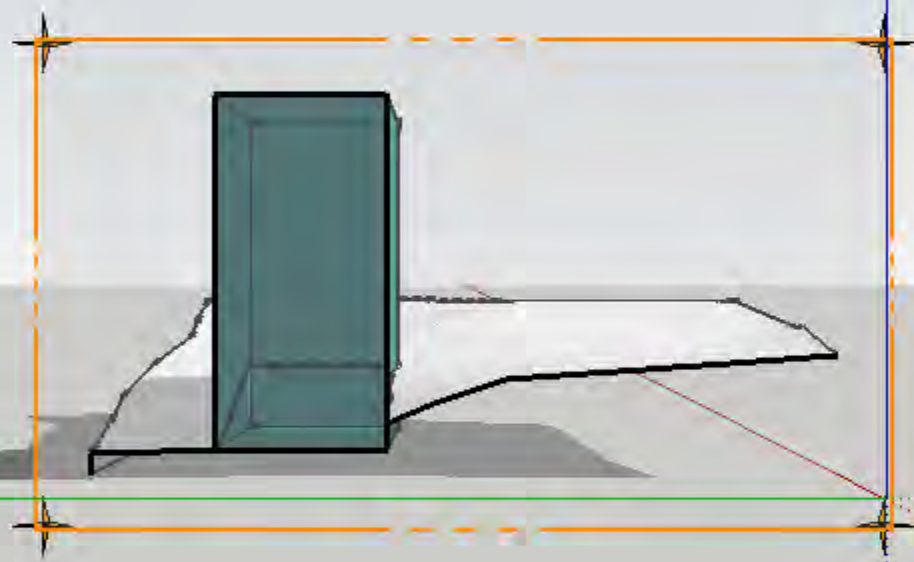


Left

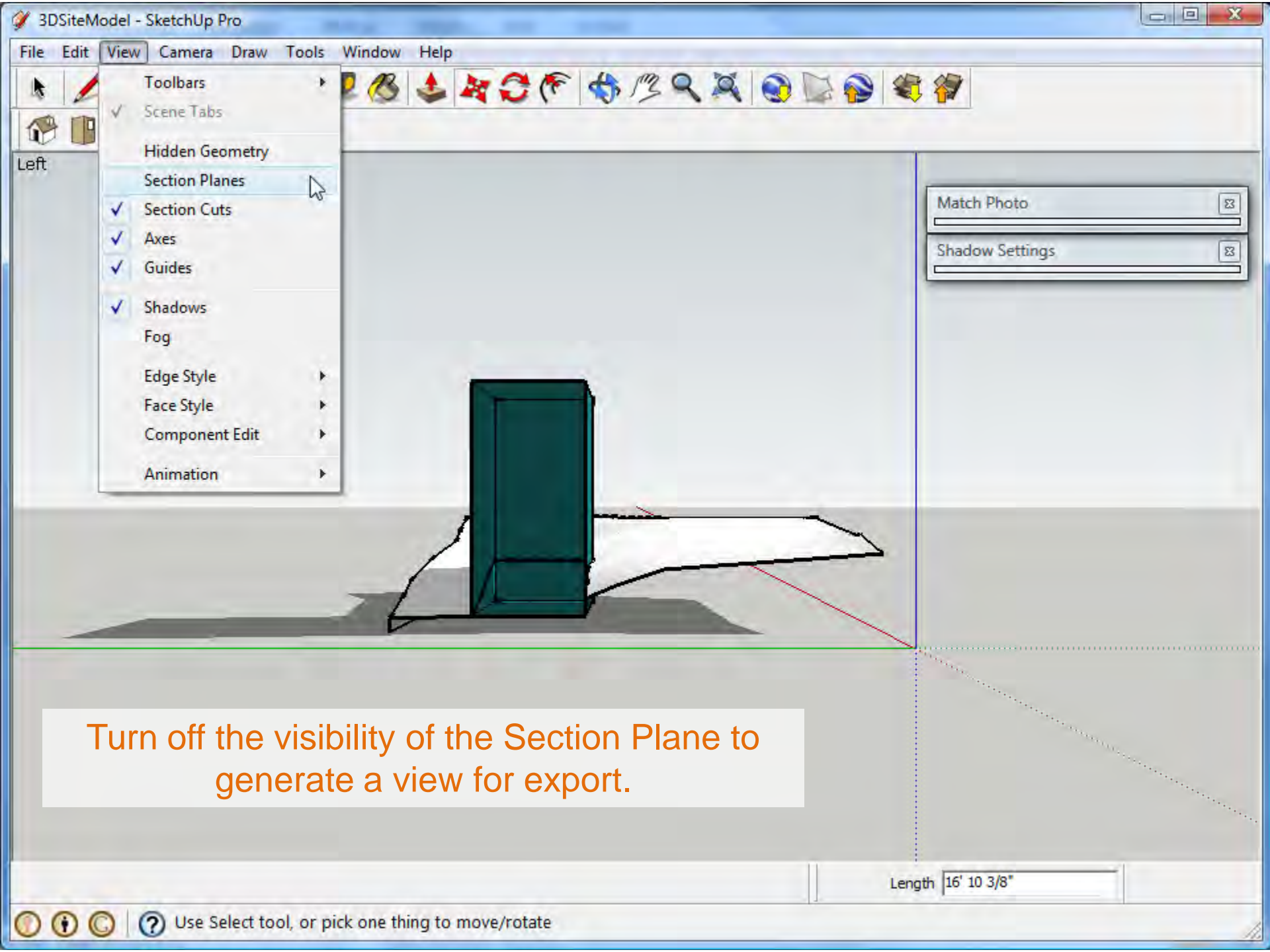
Use the **standard views** to review your work.

Match Photo

Shadow Settings



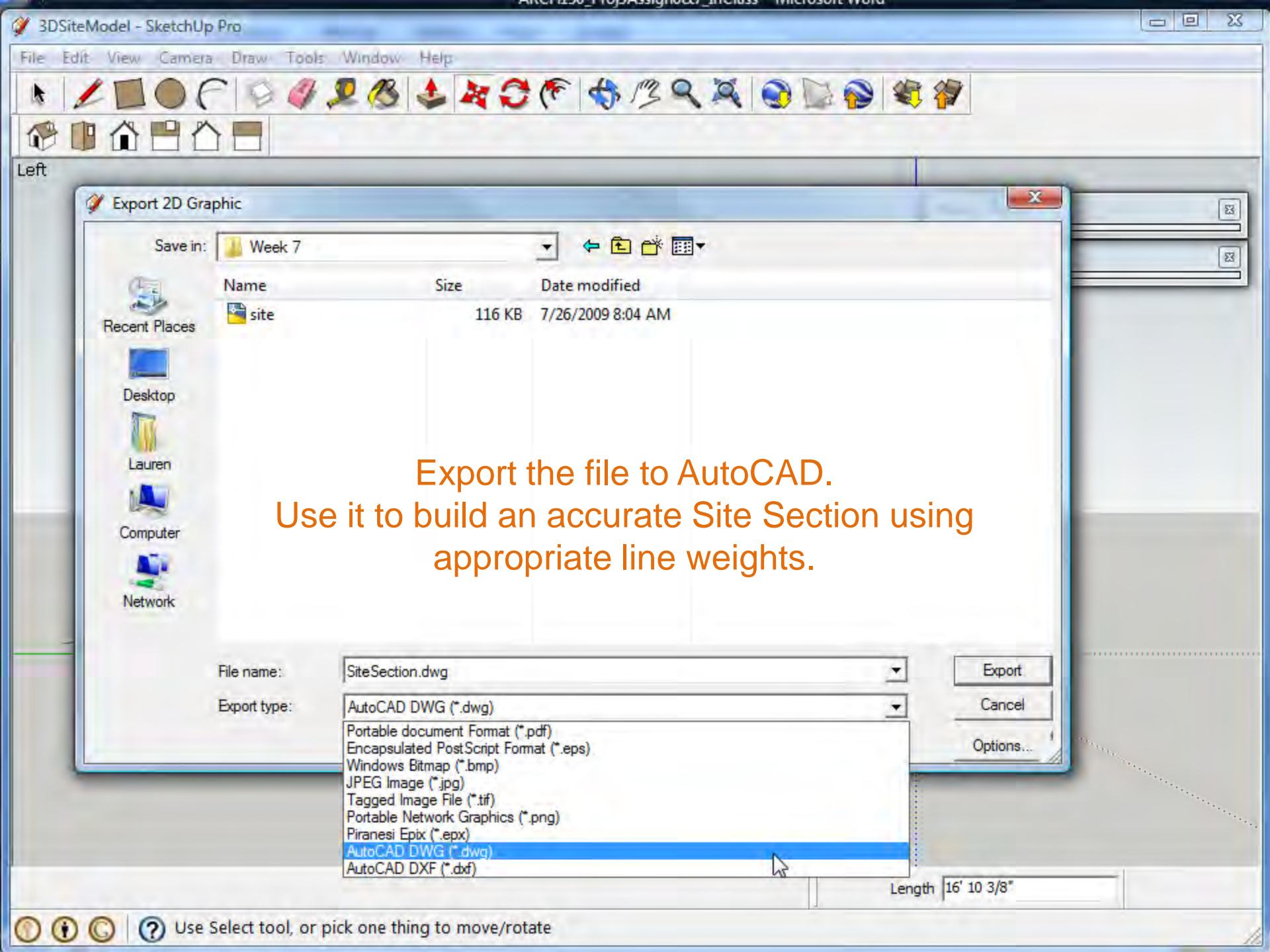
Length 16' 10 3/8"



Turn off the visibility of the Section Plane to generate a view for export.

Length 16' 10 3/8"

Use Select tool, or pick one thing to move/rotate



Export the file to AutoCAD.
Use it to build an accurate Site Section using
appropriate line weights.

File name:

SiteSection.dwg

Export

Export type:

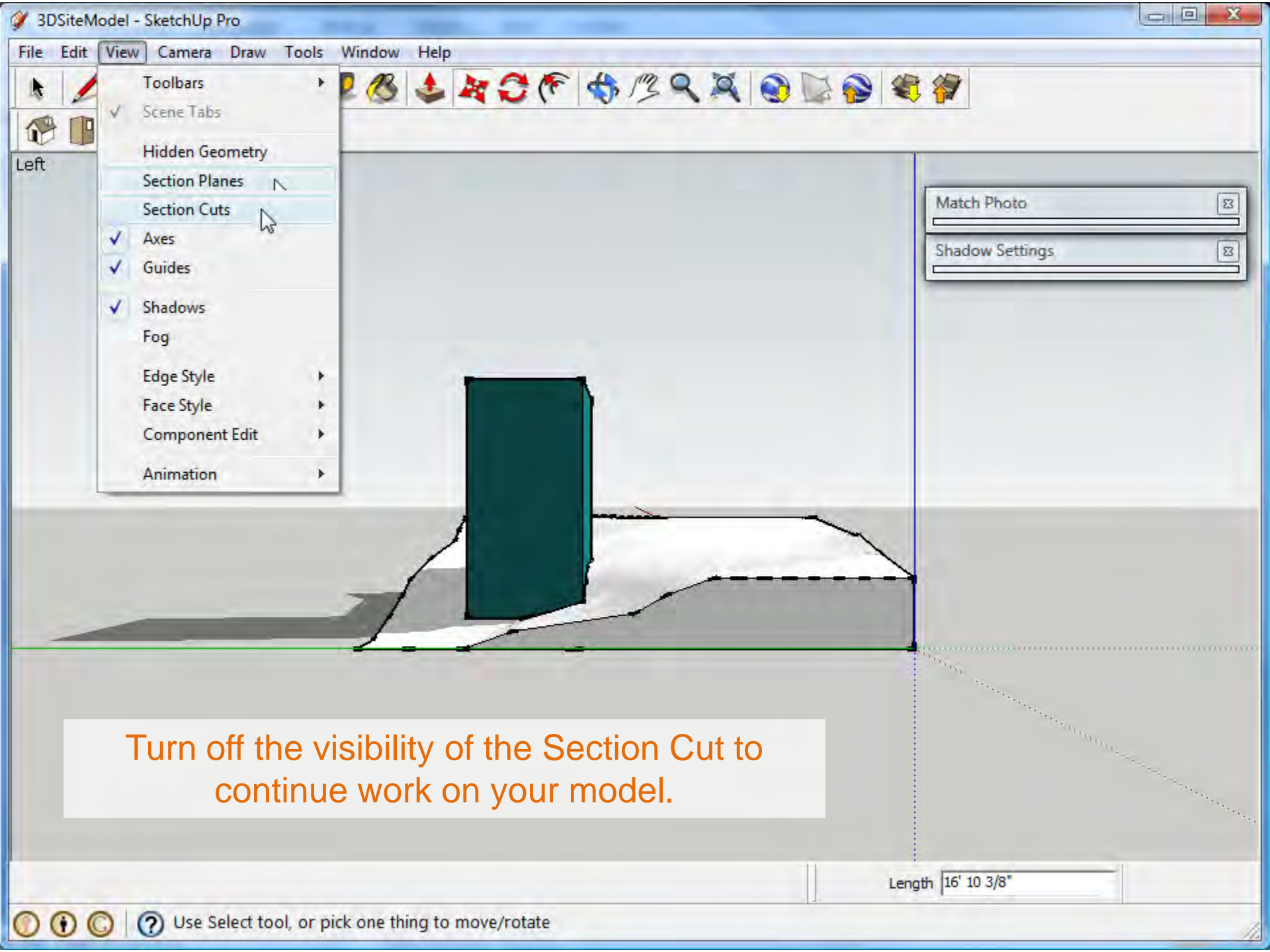
AutoCAD DWG (*.dwg)

Cancel

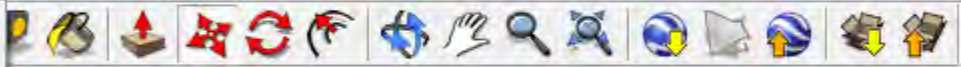
- Portable document Format (*.pdf)
- Encapsulated PostScript Format (*.eps)
- Windows Bitmap (*.bmp)
- JPEG Image (*.jpg)
- Tagged Image File (*.tif)
- Portable Network Graphics (*.png)
- Piranesi Epix (*.epx)
- AutoCAD DWG (*.dwg)
- AutoCAD DXF (*.dxf)

Options...

Length 16' 10 3/8"



- Toolbars
- ✓ Scene Tabs
- Hidden Geometry
- Section Planes
- Section Cuts
- ✓ Axes
- ✓ Guides
- ✓ Shadows
- Fog
- Edge Style
- Face Style
- Component Edit
- Animation



Match Photo

Shadow Settings

Turn off the visibility of the Section Cut to continue work on your model.

Length 16' 10 3/8"

Use photographic imagery and textures to augment your site section.



Make adjustments to the section in Photoshop:
add scale figures, images of plantings and
photographs of building context.



Edit the ground plane to be graphically in keeping with the rest of your presentation.

