

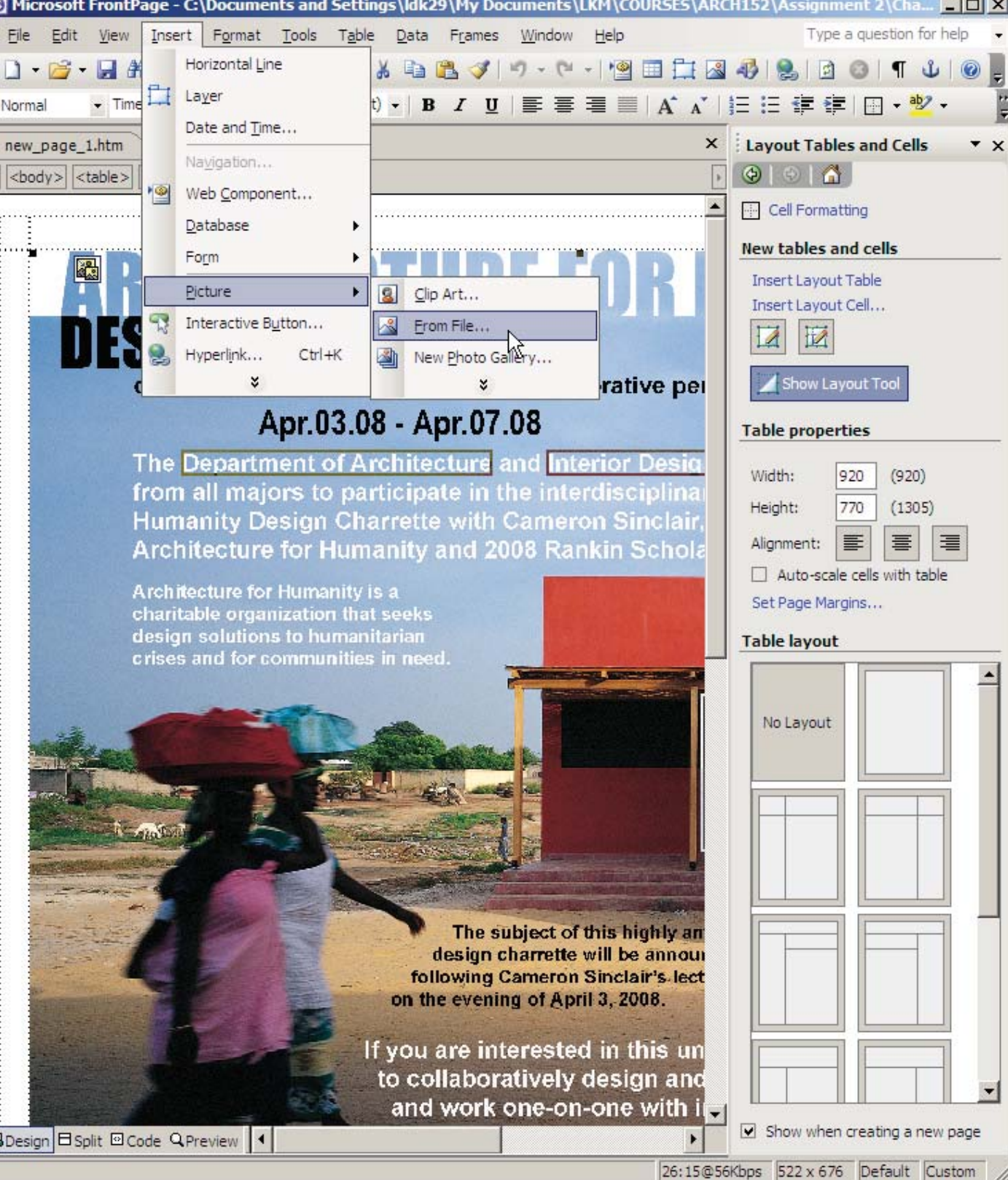
Frontpage Tips

When creating an image for a website that requires definitive text alignment, it is often a good idea to create a multi-layered Photoshop document with the text included.

This document must then be flattened into a .jpg in Photoshop and "Saved for Web" (File menu > save for web) to decrease the file size.

This image can then be used in a Frontpage file by inserting the image.





Frontpage Tips

Note that the image has been inserted into the table, **not as a background image**.

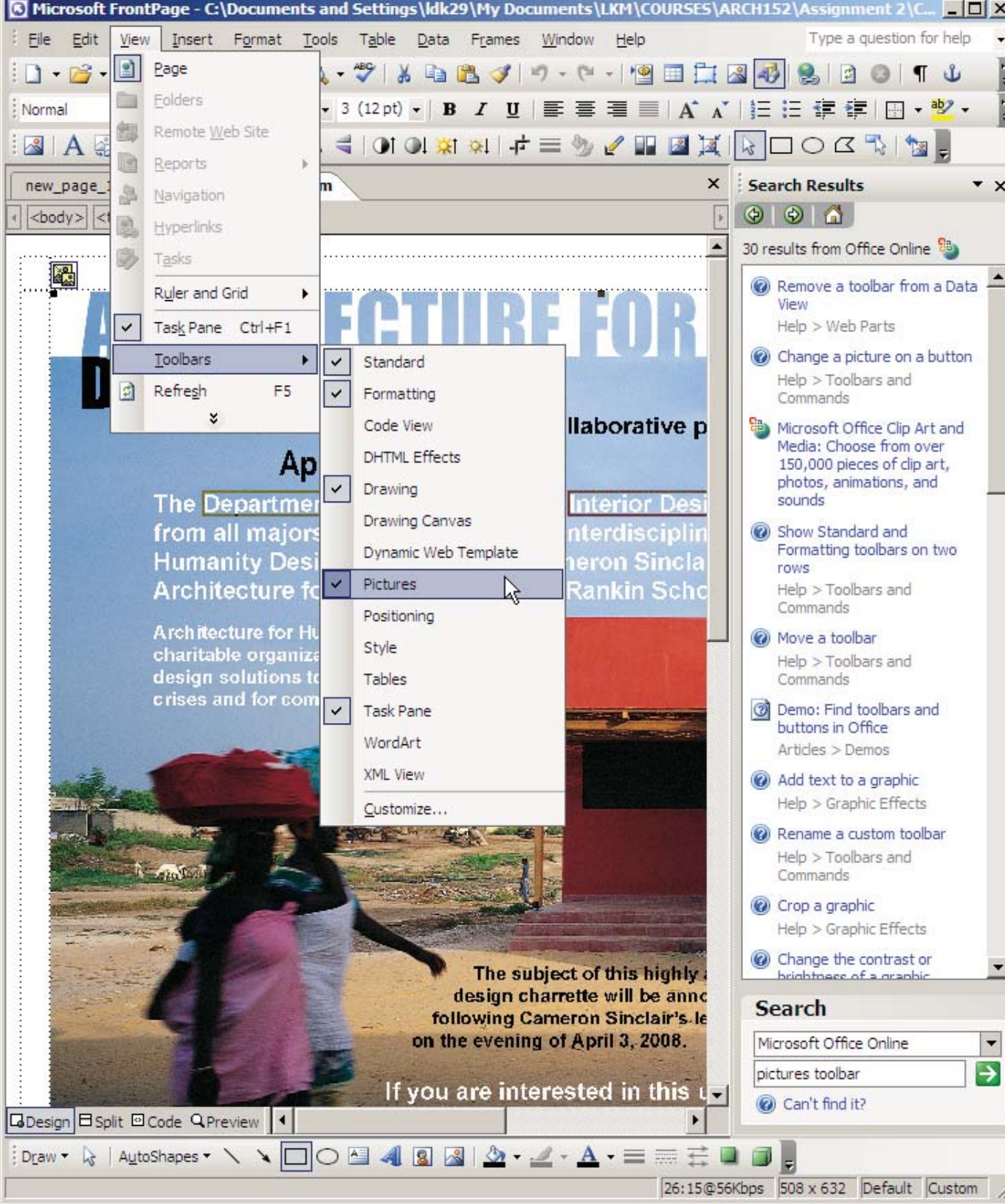
Avoid background images when creating a personal website.

Remember, you want to showcase your work, not distract from it. A very busy background can make concentrating on individual projects impossible.

In addition, NEVER use a pre-loaded background image. A personal website should showcase YOUR design work, not that of Frontpage or any other graphics program.

It is not necessary to fill all of the white space on a page.

This applies to websites and portfolios.



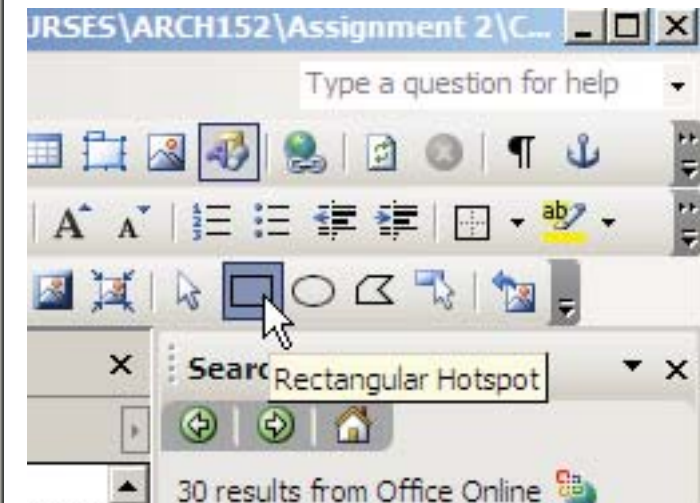
Pictures Toolbar

Once you've inserted a .jpg into your Frontpage document you can add "hot spots" to it which are links to other webpages.

To begin, open the Pictures toolbar and dock it below the other tool bars at the top of your screen.

Select your image and then select "Rectangular Hotspot" (or circular) from the Pictures toolbar.

Draw it around the portion of your image that you'd like to turn into a link.



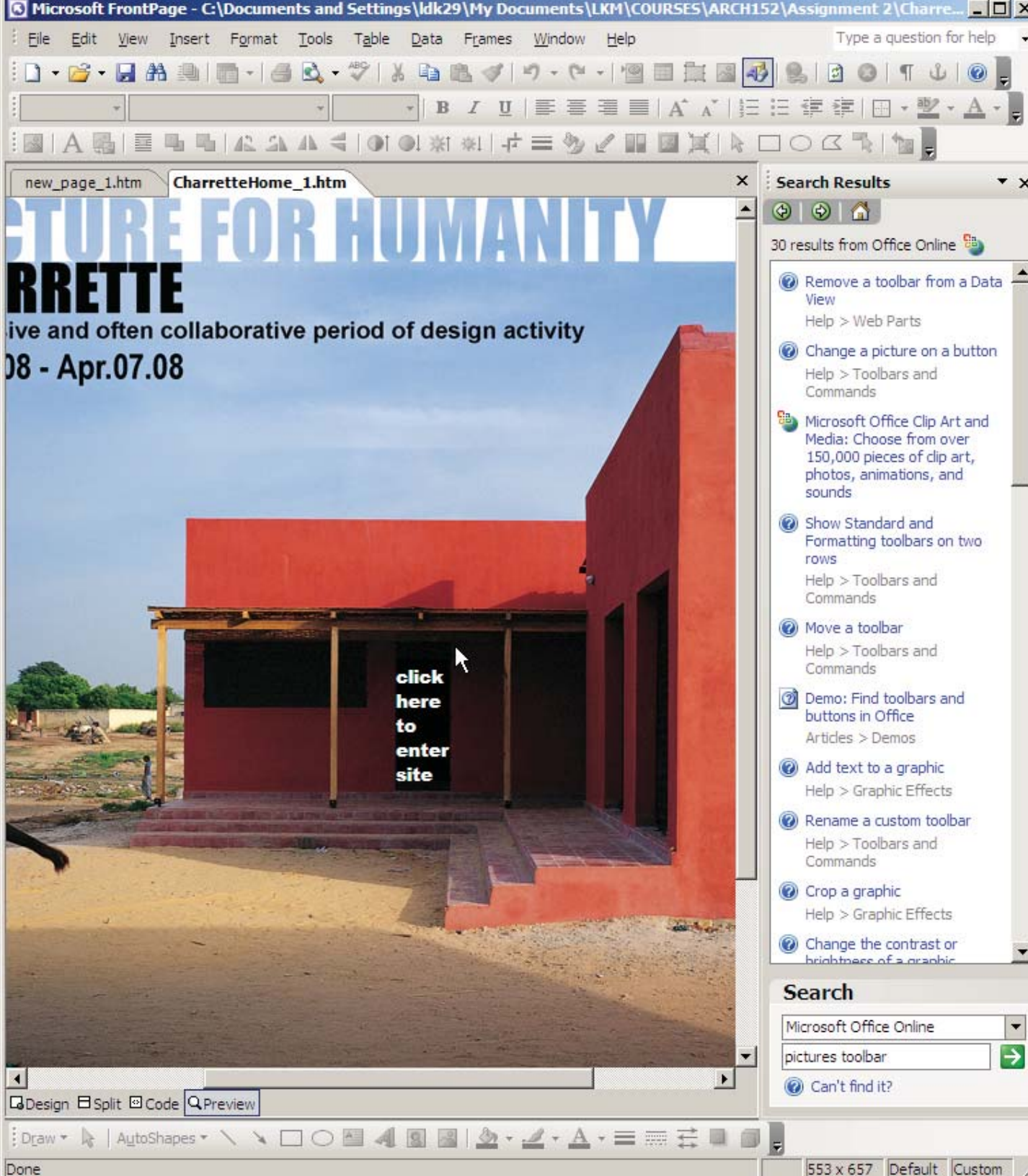
Text

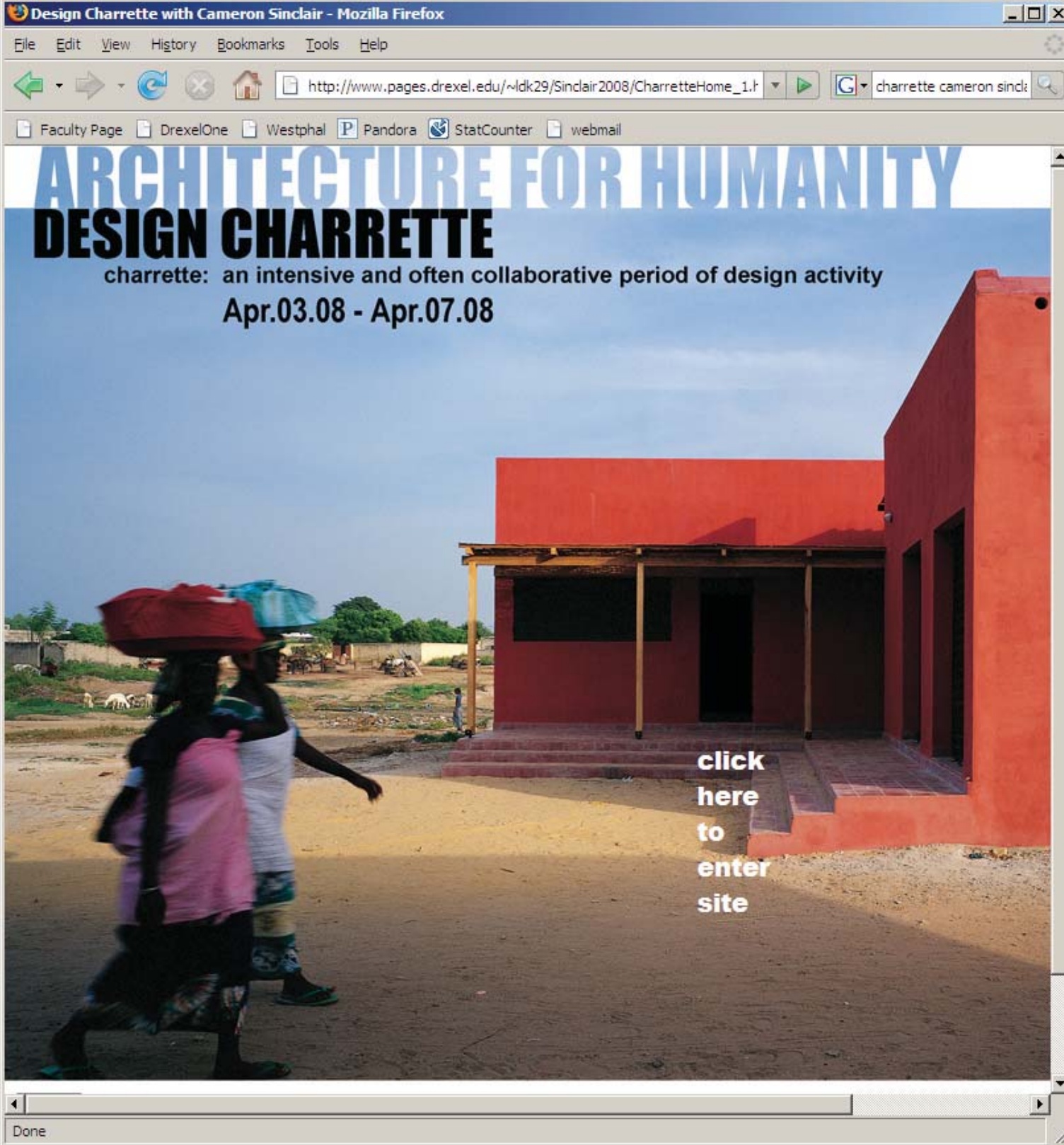
Here's an example of the *wrong way* to use imagery on a website.

A background image has been set up and text is placed on top.

The alignment looks fine in Preview mode in Frontpage, and fine on my computer's web browser.

But, if I increase the font size on my browser (try this: **ctrl + + (plus sign)**), or switch to a new browser, the alignments will change.





Text

This problem applies to the use of layers and supplementary graphics in Frontpage.

Use Frontpage ONLY for page layout. All image creation and the establishment of specific alignments should be done in Photoshop.

Everyone's computers have different presets, screen resolutions, and font selections.

Keep your website simple to keep the design looking the way you intend it too.